

Tuba Fingering Chart

Notes on gray background are pedal tones.

	A \sharp	B \flat	B	C	C \sharp	D \flat	D	D \sharp	E \flat	E	F
BB \flat Tuba											
C Tuba	1	2	Open	1 2 3 4	1 2 3 4 or 2 3 (lip down)	1 3 4	2 3 4	1 2 4	2 4 or 1 2 3	4 or 1 3	1 2 4

	F \sharp	G \flat	G	G \sharp	A \flat	A	A \sharp	B \flat	B	C	C \sharp	D \flat
BB \flat Tuba												
C Tuba	2 3	4	1 2	1	2 3	2	Open	1	2	Open	2 3	2 4

	D	D \sharp	E \flat	E	F	F \sharp	G \flat	G	G \sharp	A \flat	A
BB \flat Tuba											
C Tuba	1 2	1	2	Open	2 3	1 2	1	2	Open	2 3	1 2

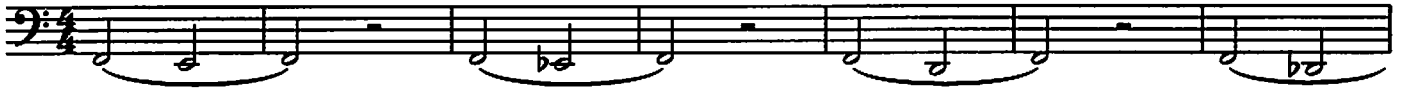
	A \sharp	B \flat	B	C	C \sharp	D \flat	D	D \sharp	E \flat	E	F
BB \flat Tuba											
C Tuba	Open	1 2	1	2	Open	1	2	Open	1	2	Open

	F \sharp	G \flat	G	G \sharp	A \flat	A	A \sharp	B \flat	B	C	C \sharp	D \flat
BB \flat Tuba												
C Tuba	2 3	1 2	1	2	Open	1 2	1	2	Open	1 2	Open	1 2

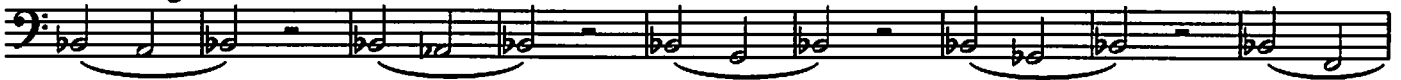
	D	D \sharp	E \flat	E	F	F \sharp	G \flat	G	G \sharp	A \flat	A	A \sharp	B \flat
BB \flat Tuba													
C Tuba	Open	1	2	Open	2 3	1 2	1	2	Open	2 3	1 2	Open	1

Long Tones Warm-up

Exercise #1 - Remington from F



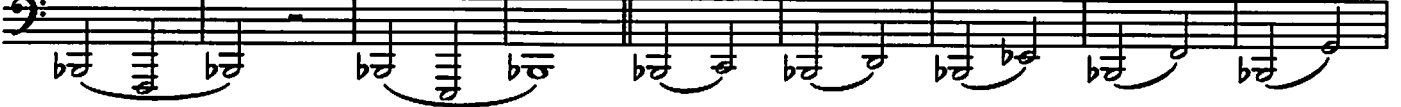
Exercise #2 - Remington from Bb



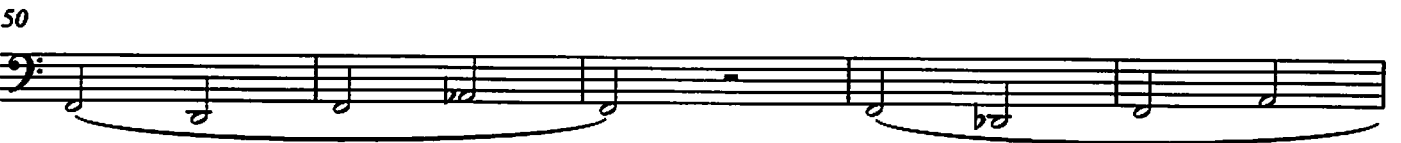
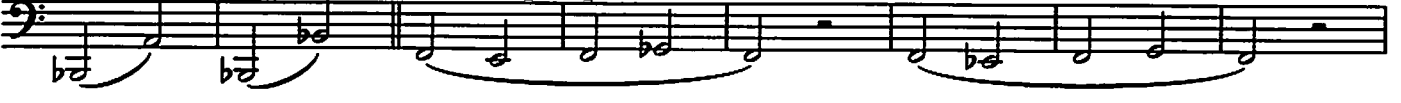
Exercise #3 - Remington from Low Bb



Exercise #4 - Intervals



Exercise #5 - Half Step Expansion



Scale Warm ups

Tuba - Bb major

3

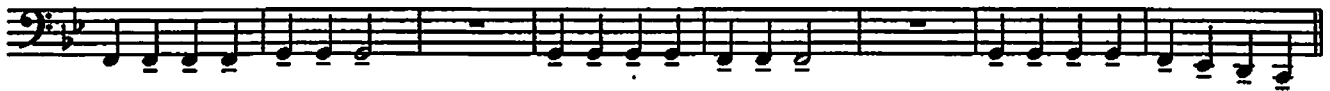
Legato tongue



Legato vs. Staccato



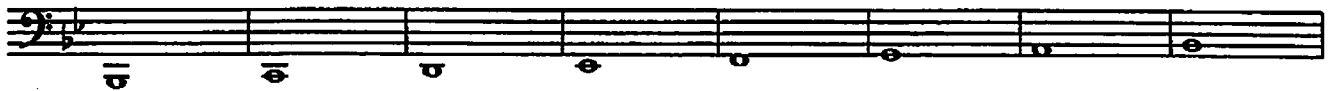
Legato tongue 2



Stagger breathe



Scale long tones



37



45



Chorale in Thirds

4



Exercise in Thirds

A single bass clef staff containing a sequence of eighth notes. The notes are grouped into pairs, with a slur under each pair, indicating intervals of a third. The sequence starts on a low G and moves up stepwise to a high G.

Solo in Thirds

A single bass clef staff containing a sequence of eighth notes. The notes are grouped into pairs, with a slur under each pair, indicating intervals of a third. The sequence starts on a low G and moves up stepwise to a high G.

Up 5 Down 5

A single bass clef staff containing a sequence of eighth notes. The first five notes are grouped with a slur and an upward-pointing arrow, indicating an ascending fifth. The next five notes are grouped with a slur and a downward-pointing arrow, indicating a descending fifth. The sequence starts on a low G and ends on a low G.

Staccato syncopation

Two bass clef staves. The first staff begins with a '2' above it, indicating a second measure rest. The notes are eighth notes with stems pointing down, and there are eighth rests between them, creating a syncopated, staccato effect. The sequence starts on a low G and moves up stepwise to a high G.

Scale and Arpeggio

A single bass clef staff containing a sequence of eighth notes. The notes are grouped into pairs, with a slur under each pair, indicating intervals of a third. The sequence starts on a low G and moves up stepwise to a high G.

Scale Groove

Two bass clef staves. The first staff contains eighth notes with stems pointing down, and there are eighth rests between them, creating a syncopated, staccato effect. The sequence starts on a low G and moves up stepwise to a high G. The second staff continues the sequence with eighth notes and stems pointing up, also with eighth rests between them.

Scale - Short and Fast

A single bass clef staff containing a sequence of eighth notes. The notes are grouped into pairs, with a slur under each pair, indicating intervals of a third. The sequence starts on a low G and moves up stepwise to a high G.

Tuning chorale Slower

A single bass clef staff containing a sequence of eighth notes. The notes are grouped into pairs, with a slur under each pair, indicating intervals of a third. The sequence starts on a low G and moves up stepwise to a high G.

Exercise in Thirds

Musical notation for Exercise in Thirds, featuring a single staff with a bass clef and a key signature of two flats. The exercise consists of a continuous sequence of eighth notes, with a slur over the first two measures and another slur over the last two measures.

Solo in Thirds

Musical notation for Solo in Thirds, featuring a single staff with a bass clef and a key signature of two flats. The exercise consists of a continuous sequence of eighth notes, with a slur over the first two measures and another slur over the last two measures.

Up 5 Down 5

Musical notation for Up 5 Down 5, featuring a single staff with a bass clef and a key signature of two flats. The exercise consists of a continuous sequence of eighth notes, with a slur over the first two measures and another slur over the last two measures.

Staccato syncopation

Musical notation for Staccato syncopation, featuring two staves with a bass clef and a key signature of two flats. The exercise consists of a continuous sequence of eighth notes, with a slur over the first two measures and another slur over the last two measures. A '2' is written above the first measure of the second staff.

Scale and Arpeggio

Musical notation for Scale and Arpeggio, featuring a single staff with a bass clef and a key signature of two flats. The exercise consists of a continuous sequence of eighth notes, with a slur over the first two measures and another slur over the last two measures.

Scale Groove

Musical notation for Scale Groove, featuring two staves with a bass clef and a key signature of two flats. The exercise consists of a continuous sequence of eighth notes, with a slur over the first two measures and another slur over the last two measures.

Scale - Short and Fast

Musical notation for Scale - Short and Fast, featuring a single staff with a bass clef and a key signature of two flats. The exercise consists of a continuous sequence of eighth notes, with a slur over the first two measures and another slur over the last two measures.

Tuning chorale Slower

Musical notation for Tuning chorale Slower, featuring a single staff with a bass clef and a key signature of two flats. The exercise consists of a continuous sequence of eighth notes, with a slur over the first two measures and another slur over the last two measures.

Exercise in Thirds

A single musical staff in bass clef with a key signature of two flats (B-flat and E-flat). The music consists of a continuous eighth-note scale, starting on G2 and ascending to G3, with a slur over the entire line.

Solo in Thirds

A single musical staff in bass clef with a key signature of two flats. The music consists of a continuous eighth-note scale, starting on G2 and ascending to G3, with a slur over the entire line.

Up 5 Down 5

A single musical staff in bass clef with a key signature of two flats. The music consists of an eighth-note scale starting on G2, ascending to G3, and then descending back to G2. There are slurs over the ascending and descending portions.

Staccato syncopation

A single musical staff in bass clef with a key signature of two flats. The music consists of eighth notes with a staccato articulation. There is a fermata over the first two notes, and a '2' above the staff indicating a second ending or measure repeat.

A single musical staff in bass clef with a key signature of two flats, continuing the staccato eighth-note pattern from the previous staff.

Scale and Arpeggio

A single musical staff in bass clef with a key signature of two flats. The music consists of an eighth-note scale starting on G2 and ascending to G3, with slurs over the ascending and descending portions.

Scale Groove

A single musical staff in bass clef with a key signature of two flats. The music consists of eighth notes with a rhythmic groove, starting on G2 and ascending to G3.

A single musical staff in bass clef with a key signature of two flats, continuing the eighth-note rhythmic groove from the previous staff.

Scale - Short and Fast

A single musical staff in bass clef with a key signature of two flats. The music consists of eighth notes with a rhythmic groove, starting on G2 and ascending to G3.

Tuning chorale Slower

A single musical staff in bass clef with a key signature of two flats. The music consists of a slow-moving scale starting on G2 and ascending to G3, with slurs over the ascending and descending portions.

Scale Warm ups

9

Trumpet - F major

Legato tongue



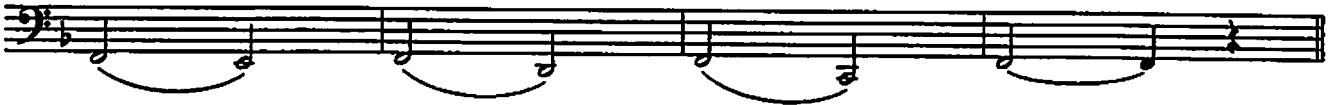
Legato vs. Staccato



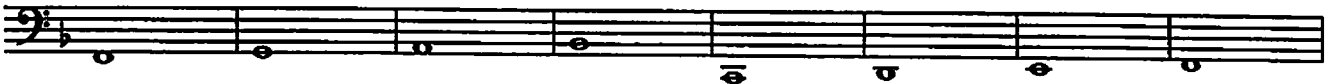
Legato tongue 2



Stagger breathe



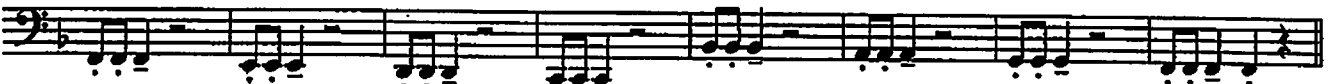
Scale long tones



37

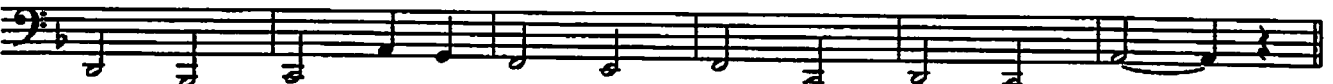


Legato vs. Staccato 2



Chorale in Thirds

4



Exercise in Thirds

Musical notation for Exercise in Thirds, featuring a single staff with a bass clef and a key signature of one flat. The exercise consists of a series of eighth notes, with a slur over the first six notes and another slur over the next six notes, indicating a two-measure phrase.

Solo in Thirds

Musical notation for Solo in Thirds, featuring a single staff with a bass clef and a key signature of one flat. The exercise consists of a series of eighth notes, with a slur over the first six notes and another slur over the next six notes, indicating a two-measure phrase.

Up 5 Down 5

Musical notation for Up 5 Down 5, featuring a single staff with a bass clef and a key signature of one flat. The exercise consists of a series of eighth notes, with a slur over the first six notes and another slur over the next six notes, indicating a two-measure phrase.

Staccato syncopation

Musical notation for Staccato syncopation, featuring two staves with a bass clef and a key signature of one flat. The exercise consists of a series of eighth notes, with a slur over the first six notes and another slur over the next six notes, indicating a two-measure phrase. A '2' is written above the first staff, indicating a two-measure phrase.

Scale and Arpeggio

Musical notation for Scale and Arpeggio, featuring a single staff with a bass clef and a key signature of one flat. The exercise consists of a series of eighth notes, with a slur over the first six notes and another slur over the next six notes, indicating a two-measure phrase.

Scale Groove

Musical notation for Scale Groove, featuring two staves with a bass clef and a key signature of one flat. The exercise consists of a series of eighth notes, with a slur over the first six notes and another slur over the next six notes, indicating a two-measure phrase.

Scale - Short and Fast

Musical notation for Scale - Short and Fast, featuring a single staff with a bass clef and a key signature of one flat. The exercise consists of a series of eighth notes, with a slur over the first six notes and another slur over the next six notes, indicating a two-measure phrase.

Tuning chorale Slower

Musical notation for Tuning chorale Slower, featuring a single staff with a bass clef and a key signature of one flat. The exercise consists of a series of eighth notes, with a slur over the first six notes and another slur over the next six notes, indicating a two-measure phrase.



Tuba

Band Basics in Bb

Developing Ensemble Sound and Technique

John McAllister

Bb Scale

Musical notation for the Bb Scale, measures 1 through 8. The scale is written in bass clef with a key signature of two flats (Bb and Eb) and a 4/4 time signature. The notes are: 1. Bb, 2. C, 3. D, 4. Eb, 5. F, 6. G, 7. Ab, 8. Bb. Each note is marked with a measure number above it.

Listen to the Sections

Musical notation for 'Listen to the Sections', measures 9 through 17. The notation is in bass clef with a key signature of two flats and a 4/4 time signature. Measures 9-11 are marked with a '2' above the staff and labeled 'Woodwind Choir'. Measures 12-13 are marked with a '3' above the staff and labeled 'Brass Choir'. Measures 14-16 are marked with a '3' above the staff and labeled 'Percussion Section'. Measure 17 is labeled 'Full Band'.

Solidify the Key

Musical notation for 'Solidify the Key', measures 18 through 25. The notation is in bass clef with a key signature of two flats and a 4/4 time signature. Measures 18-21 are quarter notes, and measure 21 has a fermata. Measures 22-25 are eighth notes. An 'opt. 8va' instruction is placed below measures 22-25.

Technique #1

Musical notation for 'Technique #1', measures 26 through 29. The notation is in bass clef with a key signature of two flats and a 4/4 time signature, featuring eighth-note patterns.

Musical notation for 'Technique #1', measures 30 through 33. The notation is in bass clef with a key signature of two flats and a 4/4 time signature, continuing the eighth-note patterns.

Technique #2

Musical notation for 'Technique #2', measures 34 through 37. The notation is in bass clef with a key signature of two flats and a 4/4 time signature, featuring eighth-note patterns.

Chorale

Musical notation for 'Chorale', measures 38 through 41. The notation is in bass clef with a key signature of two flats and a 4/4 time signature, featuring eighth-note patterns.

Musical notation for 'Chorale', measures 42 through 47. The notation is in bass clef with a key signature of two flats and a 4/4 time signature, featuring eighth-note patterns.

Tuba

Band Basics in Eb

Developing Ensemble Sound and Technique

John McAllister

Eb Scale

Musical notation for the Eb Scale, measures 1-8. The scale is written in bass clef with a key signature of two flats (Bb and Eb) and a 4/4 time signature. The notes are: 1. Eb, 2. F, 3. G, 4. Ab, 5. Bb, 6. C, 7. D, 8. Eb. Each note is marked with its measure number and includes a fingering number (1-5) and a breath mark (b) below the note.

Listen to the Sections

Musical notation for Listen to the Sections, measures 9-17. The notation is in bass clef with a key signature of two flats and a 4/4 time signature. Measures 9-10 are marked with a '2' and labeled 'Woodwind Choir'. Measures 11-12 are marked with an '11' and labeled 'Brass Choir'. Measures 13-15 are marked with a '3' and labeled 'Percussion Section'. Measures 16-17 are labeled 'Full Band'.

Solidify the Key

Musical notation for Solidify the Key, measures 18-25. The notation is in bass clef with a key signature of two flats and a 4/4 time signature. The notes are: 18. Eb, 19. F, 20. G, 21. Ab, 22. Bb, 23. C, 24. D, 25. Eb. Measure 21 has a fermata over the Ab note.

Technique #1

Musical notation for Technique #1, measures 26-29. The notation is in bass clef with a key signature of two flats and a 4/4 time signature. It features a continuous eighth-note pattern: Eb, F, G, Ab, Bb, C, D, Eb.

Musical notation for Technique #1 continuation, measures 30-33. The notation is in bass clef with a key signature of two flats and a 4/4 time signature. It continues the eighth-note pattern from the previous section.

Technique #2

Musical notation for Technique #2, measures 34-38. The notation is in bass clef with a key signature of two flats and a 4/4 time signature. It features a continuous eighth-note pattern: Eb, F, G, Ab, Bb, C, D, Eb.

Chorale

Musical notation for Chorale, measures 39-42. The notation is in bass clef with a key signature of two flats and a 4/4 time signature. The notes are: 39. Eb, 40. F, 41. G, 42. Ab.

Musical notation for Chorale continuation, measures 43-47. The notation is in bass clef with a key signature of two flats and a 4/4 time signature. The notes are: 43. Bb, 44. C, 45. D, 46. Eb, 47. F. Measure 47 has a fermata over the F note.

Tuba

Band Basics in Ab

Developing Ensemble Sound and Technique

John McAllister

Bb Scale

Musical notation for the Bb Scale, measures 1-8. The scale is written in bass clef with a key signature of two flats (Bb and Eb) and a 4/4 time signature. The notes are: 1. Bb, 2. C, 3. D, 4. Eb, 5. F, 6. G, 7. Ab, 8. Bb.

Listen to the Sections

Musical notation for Listen to the Sections, measures 9-17. The notation includes rests for measures 9-10 and 13-14, and notes for measures 11-12, 15-16, and 17. Section labels are placed below the staff: **Woodwind Choir** (measures 9-10), **Brass Choir** (measures 11-12), **Percussion Section** (measures 13-14), and **Full Band** (measures 15-17).

Solidify the Key

Musical notation for Solidify the Key, measures 18-25. The notation shows a sequence of notes and rests in the bass clef, including a fermata over measure 21.

Technique #1

Musical notation for Technique #1, measures 26-29. The notation shows a continuous eighth-note pattern in the bass clef.

Musical notation for Technique #1 continuation, measures 30-33. The notation shows a continuous eighth-note pattern in the bass clef.

Technique #2

Musical notation for Technique #2, measures 34-37. The notation shows a continuous eighth-note pattern in the bass clef.

Chorale

Musical notation for Chorale, measures 38-41. The notation shows a sequence of notes and rests in the bass clef.

Musical notation for Chorale continuation, measures 42-47. The notation shows a sequence of notes and rests in the bass clef.

Tuba

Band Basics in F

Developing Ensemble Sound and Technique

John McAllister

Eb Scale

Musical notation for the Eb Scale, measures 1-8. The scale is written in bass clef with a key signature of two flats (Bb and Eb) and a 4/4 time signature. The notes are: 1. Eb, 2. F, 3. G, 4. Ab, 5. Bb, 6. C, 7. D, 8. Eb. Each note is accompanied by a chordal accompaniment.

Listen to the Sections

Musical notation for 'Listen to the Sections', measures 9-17. The notation is in bass clef with a key signature of two flats. It features four distinct sections: measures 9-11 are marked with a '2' and labeled 'Woodwind Choir'; measures 12-13 are marked with a '3' and labeled 'Brass Choir'; measures 14-16 are marked with a '3' and labeled 'Percussion Section'; and measures 17-18 are labeled 'Full Band'.

Solidify the Key

Musical notation for 'Solidify the Key', measures 18-25. The notation is in bass clef with a key signature of two flats. It consists of a single melodic line with notes: 18. Eb, 19. F, 20. G, 21. Ab, 22. Bb, 23. C, 24. D, 25. Eb.

Technique #1

Musical notation for 'Technique #1', measures 26-29. The notation is in bass clef with a key signature of two flats. It features a rhythmic exercise consisting of eighth-note patterns.

Musical notation for 'Technique #1' continuation, measures 30-33. The notation is in bass clef with a key signature of two flats. It continues the rhythmic exercise from the previous block.

Technique #2

Musical notation for 'Technique #2', measures 34-37. The notation is in bass clef with a key signature of two flats. It features a rhythmic exercise consisting of eighth-note patterns.

Chorale

Musical notation for 'Chorale', measures 38-41. The notation is in bass clef with a key signature of two flats. It consists of a melodic line with notes: 38. Eb, 39. F, 40. G, 41. Ab.

Musical notation for 'Chorale' continuation, measures 42-47. The notation is in bass clef with a key signature of two flats. It continues the melodic line from the previous block with notes: 42. Bb, 43. C, 44. D, 45. Eb, 46. F, 47. G.



T-B
Bar. BC.
Tuba

Chorale No. 1

Johann Crüger (1598-1663)

Soprano

Moderately Slow ♩=60

Alto

Moderately Slow ♩=60

Tenor

Moderately Slow ♩=60

Bass

Moderately Slow ♩=60



T-B
Bor. Bc.

Chorus 2

Soprano

Tuba Moderately Slow ♩=70

Musical staff for Tuba, starting with a treble clef and a key signature of one flat. The tempo is Moderately Slow with a metronome marking of 70. The staff contains a sequence of notes and rests, including a repeat sign.

Musical staff for Soprano, starting with a treble clef and a key signature of one flat. The staff contains a sequence of notes and rests, including a repeat sign.

Alto

Moderately Slow ♩=70

Musical staff for Alto, starting with a treble clef and a key signature of one flat. The tempo is Moderately Slow with a metronome marking of 70. The staff contains a sequence of notes and rests, including a repeat sign.

Musical staff for Tenor, starting with a treble clef and a key signature of one flat. The staff contains a sequence of notes and rests, including a repeat sign.

Tenor

Moderately Slow ♩=70

Musical staff for Tenor, starting with a treble clef and a key signature of one flat. The tempo is Moderately Slow with a metronome marking of 70. The staff contains a sequence of notes and rests, including a repeat sign.

Musical staff for Bass, starting with a treble clef and a key signature of one flat. The staff contains a sequence of notes and rests, including a repeat sign.

Bass

Moderately Slow ♩=70

Musical staff for Bass, starting with a treble clef and a key signature of one flat. The tempo is Moderately Slow with a metronome marking of 70. The staff contains a sequence of notes and rests, including a repeat sign.

Musical staff for Tuba, starting with a treble clef and a key signature of one flat. The staff contains a sequence of notes and rests, including a repeat sign.

T-B/Bx.B.C.

Chorale No. 4

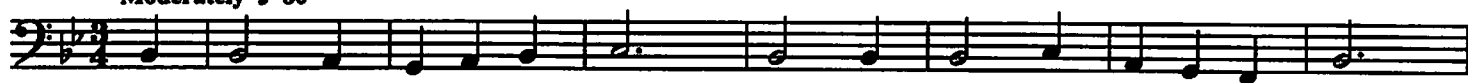
J.S. Bach (1685-1750)



Tuba

Soprano

Moderately ♩=80



Alto

Moderately ♩=80



Tenor

Moderately ♩=80



Bass

Moderately ♩=80

