

Exercise #1 - Remington from F

7

Exercise #2 - Remington from Bb

13

19

Exercise #3 - Remington from Low Bb

25

31

Exercise #4 - Intervals

37

40

Exercise #5 - Half Step Expansion

44

50

55

Long Tones Warm-up

Auxiliary 1 (tambourine, triange)

McAllister

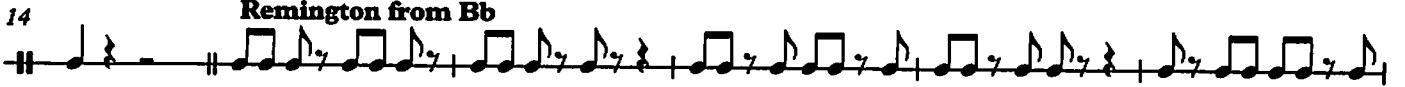
Exercise #1 - Remington from F



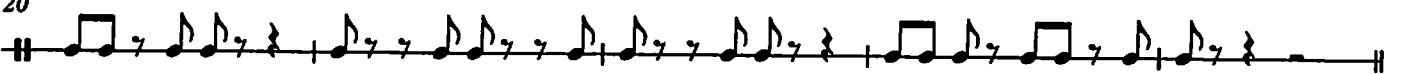
7



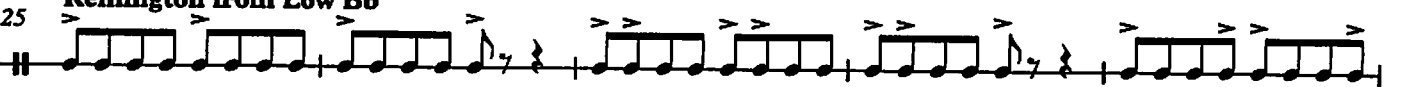
Exercise #2 - Remington from Bb



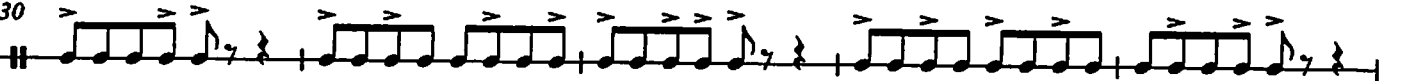
20



Exercise #3 - Remington from Low Bb



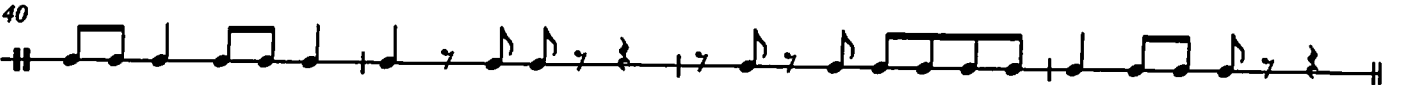
30



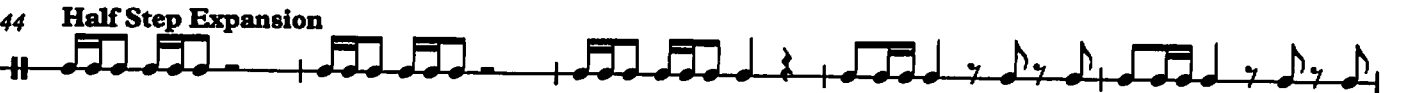
Exercise #4 - Intervals



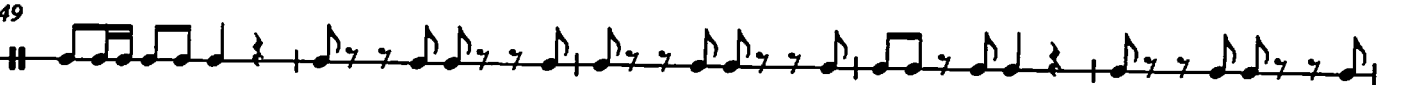
40



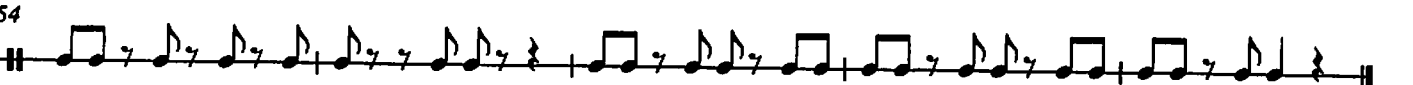
Exercise #5 - Half Step Expansion



49



54



Long Tones Warm-up

Auxiliary 2 (claves, sus. cym w/ stick, etc.)

McAllister

Exercise #1 - Remington from F

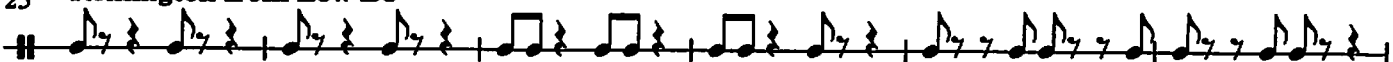


Exercise #2 - Remington from Bb



Exercise #3 -

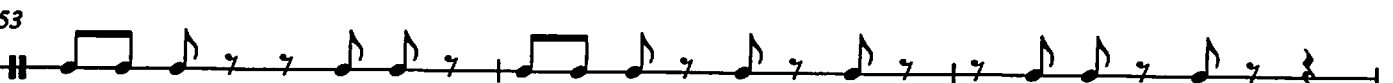
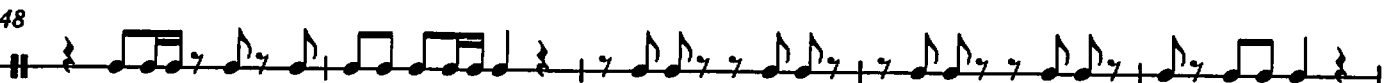
Remington from Low Bb



Exercise #4 - Intervals



Exercise #5 - Half Step Expansion



Exercise #1 - Two Note Slurs

7

Exercise #2 - Three Notes/Register

13

19

Exercise #3 - Octaves

25

30

35

Exercise #4

39

44

49

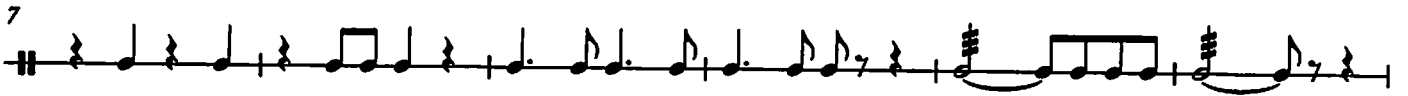
52

Flexibility Warm-up

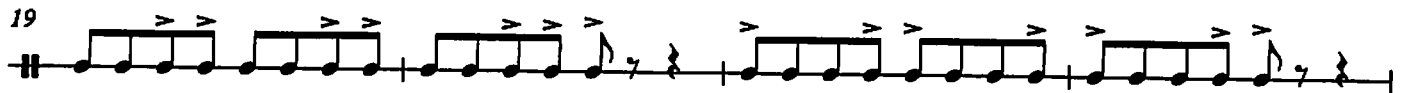
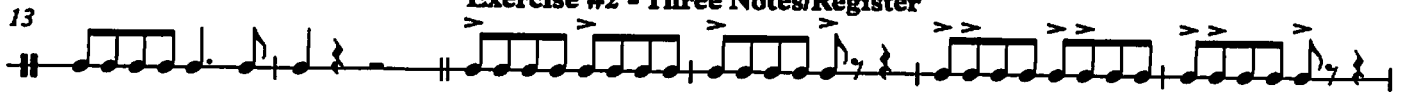
Auxiliary 1 (tambourine, triange)

McAllister

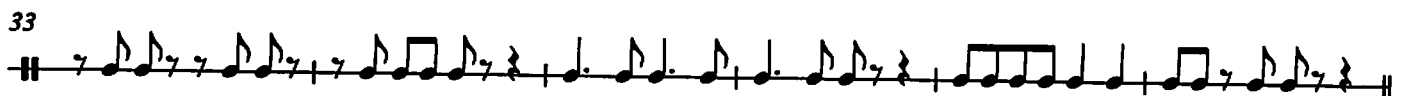
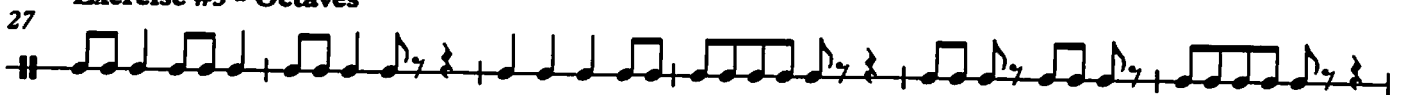
Exercise #1 - Two Note Slurs



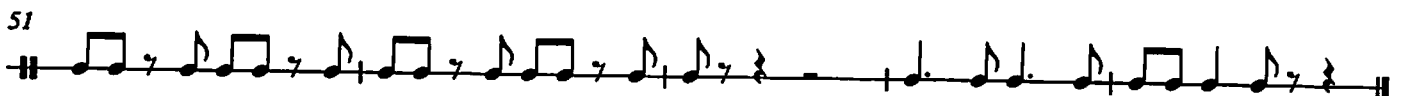
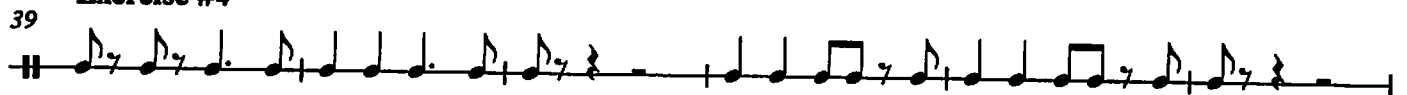
Exercise #2 - Three Notes/Register



Exercise #3 - Octaves



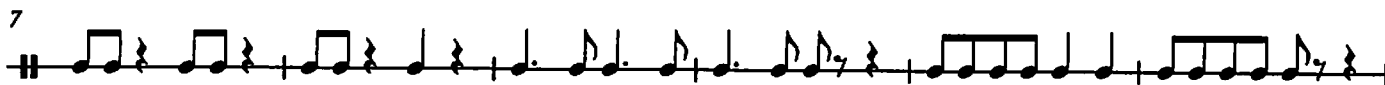
Exercise #4



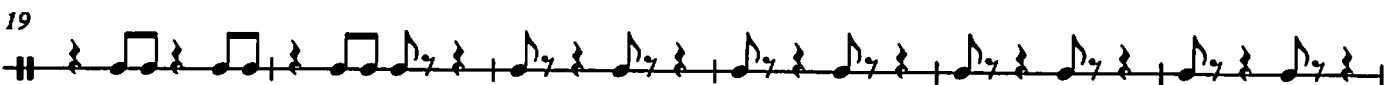
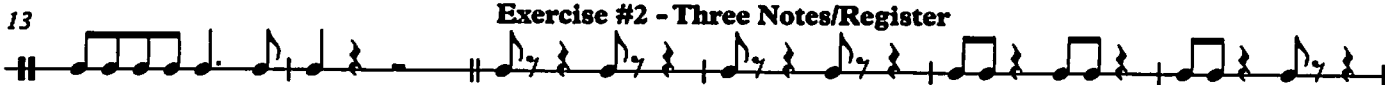
Flexibility Warm-up

McAllister

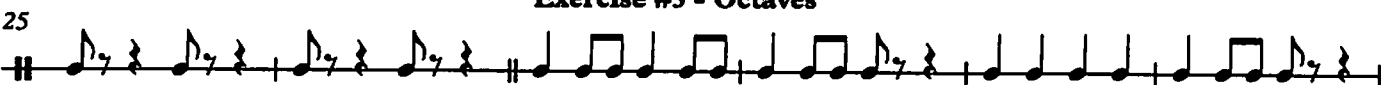
Exercise #1 - Two Note Slurs



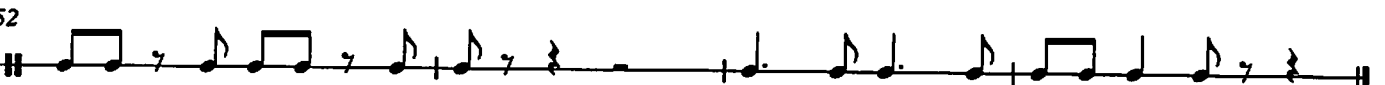
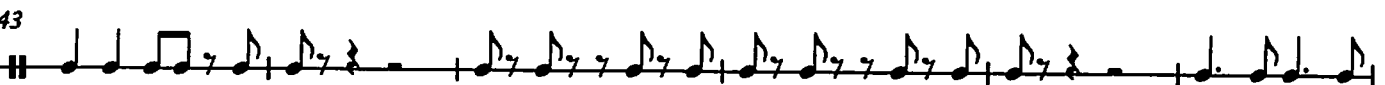
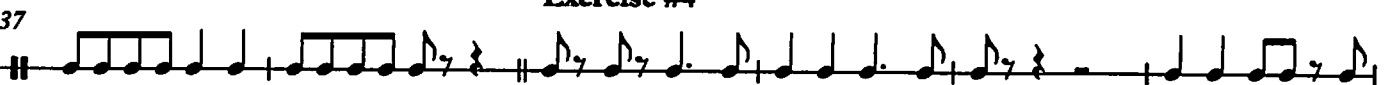
Exercise #2 - Three Notes/Register



Exercise #3 - Octaves



Exercise #4



Scale Warm ups

6th grade Percussion - All scales

Legato tongue

Two staves of musical notation. The first staff starts with a treble clef and a common time signature. It contains a sequence of eighth notes. A box with the number '5' is placed above the first measure of the second staff.

Legato vs. Staccato

Two staves of musical notation. The first staff contains eighth notes with stems pointing up, and the second staff contains eighth notes with stems pointing down. The notes are connected, indicating a legato articulation.

Legato tongue 2

Two staves of musical notation. A box with the number '2' is placed above the first measure of the first staff. The notation consists of eighth notes with stems pointing up and down.

Stagger breathe

Two staves of musical notation. Above the first staff, there are rhythmic patterns: RRRR, LLLL, RRRR, LLLL, RRRR, LLLL, RRRR, L. The notes are eighth notes with stems pointing up and down.

Scale Long tones (Paradiddle)

Two staves of musical notation. Above the first staff, there are rhythmic patterns: R L R R L, R L L L, R L R R L, R L L L. The notes are eighth notes with stems pointing up and down. The second staff has three measures with a double bar line and a '2' above each, indicating a two-measure rest.

(7 stroke roll)

Two staves of musical notation. Above the first staff, there are rhythmic patterns: R R L L R R L, L L R R L L R, R R L L R R L, L L R R L L R. The notes are eighth notes with stems pointing up and down.

Two staves of musical notation. Above the first staff, there are rhythmic patterns: R R L L R R L, L L R R L L R, R R L L R R L, L L R R L. The notes are eighth notes with stems pointing up and down. A box with the number '5' is placed above the last measure of the first staff.

Legato vs. Staccato 2

Two staves of musical notation. The first staff contains eighth notes with stems pointing up, and the second staff contains eighth notes with stems pointing down. The notes are connected, indicating a legato articulation.

Two staves of musical notation. The first staff contains eighth notes with stems pointing up, and the second staff contains eighth notes with stems pointing down. The notes are connected, indicating a legato articulation.

Chorale in Thirds Tacet through Chorale

Exercise in Thirds

Two staves of music. The first staff starts with a treble clef and a key signature of one sharp (F#). The second staff starts with a bass clef and a key signature of one sharp (F#). Both staves contain eighth-note patterns with accents (>) above the notes. The first staff has a measure number '81' at the beginning.

Solo in Thirds

Two staves of music. The first staff has a treble clef and a key signature of one sharp (F#). The second staff has a bass clef and a key signature of one sharp (F#). The first staff contains eighth-note patterns with 'x' marks above the notes, indicating a solo. The second staff contains eighth-note patterns.

Up 5 Down 5

(5 stroke roll)

R R L L R L R R L L R L R R L L R L R R L L R L

Two staves of music. The first staff has a treble clef and a key signature of one sharp (F#). The second staff has a bass clef and a key signature of one sharp (F#). The first staff contains eighth-note patterns corresponding to the stroke roll sequence above. The second staff contains eighth-note patterns.

(7 stroke roll)

R R L L R R L R R L L R R L R R L L R R L R R L L R R L

Two staves of music. The first staff has a treble clef and a key signature of one sharp (F#). The second staff has a bass clef and a key signature of one sharp (F#). The first staff contains eighth-note patterns corresponding to the stroke roll sequence above. The second staff contains eighth-note patterns.

Staccato syncopation

Two staves of music. The first staff has a treble clef and a key signature of one sharp (F#). The second staff has a bass clef and a key signature of one sharp (F#). The first staff contains eighth-note patterns with staccato marks (7) above the notes. The second staff contains eighth-note patterns.

Scale and Arpeggio

Two staves of music. The first staff has a treble clef and a key signature of one sharp (F#). The second staff has a bass clef and a key signature of one sharp (F#). The first staff contains eighth-note patterns. The second staff contains eighth-note patterns.

Scale Groove

Two staves of music. The first staff has a treble clef and a key signature of one sharp (F#). The second staff has a bass clef and a key signature of one sharp (F#). The first staff contains eighth-note patterns with '2' above the notes. The second staff contains eighth-note patterns with '2' above the notes.

Scale - Short and Fast

Two staves of music. The first staff has a treble clef and a key signature of one sharp (F#). The second staff has a bass clef and a key signature of one sharp (F#). The first staff contains eighth-note patterns with accents (>) above the notes. The second staff contains eighth-note patterns.

Tuning chorale

Tacet through tuning

Band Basics in Bb

Developing Ensemble Sound and Technique

Bb Scale

2 3 4

R L R R L R L L R L R R L R L L R L R R L R L L

5 6 7 8

R L R R L R L L R L R R L R L L R L R R R

Listen to the Sections

9 11 13 14 15 17

2 2 2

Woodwind Choir Brass Choir Percussion Section Full Band

18 19 20 21

Solidify the Key

Technique #1

use various sticking and accent combinations

Technique #2

Chorale

Band Basics in Eb

Developing Ensemble Sound and Technique

Eb Scale

Musical notation for the Eb scale, measures 1-8. The notation includes stickings (R for right hand, L for left hand) for each note. Measure numbers 2, 3, and 4 are indicated above the staff. The scale is written in 4/4 time.

Listen to the Sections

Musical notation for the 'Listen to the Sections' exercise, measures 9-21. The notation is divided into three parts: measures 9-12 for Woodwind Choir, measures 13-15 for Brass Choir, and measures 16-21 for Percussion Section. Measure numbers 9, 11, 13, 14, 15, and 17 are indicated above the staff. The exercise is in 4/4 time.

Solidify the Key

Musical notation for the 'Solidify the Key' exercise, measures 22-25. The notation features chords and melodic lines in Eb. Measure numbers 22, 23, 24, and 25 are indicated above the staff. The exercise is in 4/4 time.

Technique #1

use various sticking and accent combinations

Musical notation for Technique #1, measures 26-29. The notation shows a rhythmic pattern with various sticking and accent combinations. Measure numbers 26, 27, 28, and 29 are indicated above the staff.

Musical notation for Technique #1, measures 30-33. The notation shows a rhythmic pattern with various sticking and accent combinations. Measure numbers 30, 31, 32, and 33 are indicated above the staff.

Technique #2

Musical notation for Technique #2, measures 34-39. The notation shows a rhythmic pattern with various sticking and accent combinations. Measure numbers 34, 35, 36, 37, 38, and 39 are indicated above the staff.

Chorale

Musical notation for the Chorale, measures 40-47. The notation shows a rhythmic pattern with various sticking and accent combinations. Measure numbers 40, 41, 42, 43, 44, 45, 46, and 47 are indicated above the staff.

Band Basics in Ab

Developing Ensemble Sound and Technique

Bb Scale

2 3 4

R L R R L R L L R L R R L R L L R L R R L R L L

5 6 7 8

R L R R L R L L R L R R L R L L R L R R R R

Listen to the Sections

9 11 13 15 17

Woodwind Choir Brass Choir Percussion Section Full Band

18 19 20 21

Solidify the Key

22 23 24 25

Technique #1

use various sticking and accent combinations

26 27 28 29

30 31 32 33

Technique #2

34 35 36 37 38 39

Chorale

40 41 42 43 44 45 46 47

Band Basics in F

Developing Ensemble Sound and Technique

Eb Scale

Musical notation for the Eb scale, measures 1-8. The notation is on a single staff with a treble clef and a 4/4 time signature. The notes are: 1: R, L, R, R; 2: L, R, L, L; 3: R, L, R, R, L, R, L, L; 4: R, L, R, R, L, R, L, L; 5: R, L, R, R; 6: L, R, L, L; 7: R, L, R, R, L, R, L, L; 8: R, L, R, R. Fingerings are indicated by numbers 2, 3, and 4 above the notes.

Listen to the Sections

Musical notation for 'Listen to the Sections', measures 9-21. The notation is on a single staff with a treble clef and a 4/4 time signature. It features various rhythmic patterns and rests. Labels below the staff indicate the sections: 'Woodwind Choir Brass Choir' (measures 9-12), 'Percussion Section' (measures 13-16), and 'Full Band' (measures 17-21). Measure numbers 9, 11, 13, 14, 15, 17, 18, 19, 20, and 21 are marked above the staff.

Solidify the Key

Musical notation for 'Solidify the Key', measures 22-25. The notation is on a single staff with a treble clef and a 4/4 time signature. It features chords and rhythmic patterns. Measure numbers 22, 23, 24, and 25 are marked above the staff.

Technique #1

use various sticking and accent combinations

Musical notation for 'Technique #1', measures 26-29. The notation is on a single staff with a treble clef and a 4/4 time signature. It features a rhythmic pattern of eighth notes. Measure numbers 26, 27, 28, and 29 are marked above the staff.

Musical notation for 'Technique #1', measures 30-33. The notation is on a single staff with a treble clef and a 4/4 time signature. It features a rhythmic pattern of eighth notes. Measure numbers 30, 31, 32, and 33 are marked above the staff.

Technique #2

Musical notation for 'Technique #2', measures 34-39. The notation is on a single staff with a treble clef and a 4/4 time signature. It features a rhythmic pattern of eighth notes with accents. Measure numbers 34, 35, 36, 37, 38, and 39 are marked above the staff.

Chorale

Musical notation for 'Chorale', measures 40-47. The notation is on a single staff with a treble clef and a 4/4 time signature. It features a rhythmic pattern of eighth notes. Measure numbers 40, 41, 42, 43, 44, 45, 46, and 47 are marked above the staff.