

French Horn Fingering Chart

Many players prefer to use the B \flat Horn (trigger) when they reach second line G \sharp and continue to use it throughout the upper register.

C	C \sharp D \flat	D	D \sharp E \flat	E	F
Open	T 2 3	T 1 2	T 1	T 2	T open

F \sharp G \flat	G	G \sharp A \flat	A	A \sharp B \flat	B
1 2 3	1 3	2 3	1 2	1	2

C	C \sharp D \flat	D	D \sharp E \flat	E	F
Open	T 2 3 or 1 2 3	T 1 2 or 1 3	T 1 or 2 3	T 2 or 1 2	T open or 1

F \sharp G \flat	G	G \sharp A \flat	A	A \sharp B \flat	B
2	Open	2 3	1 2	1	2

C	C \sharp D \flat	D	D \sharp E \flat	E	F	F \sharp G \flat
Open	1 2	1	2	Open	1	2

G	G \sharp A \flat	A	A \sharp B \flat	B	C
Open	T 2 3 or 2 3	T 1 2 or 1 2	T 1 or 1	T 2 or 2	T open or Open

C \sharp D \flat	D	D \sharp E \flat	E	F	F \sharp G \flat
T 2 3 or 1 2 or 2	T 1 2 or 1 or Open	T 1 or 2	T 2 or Open	T open or 1	T 2 or T 1 2 or 2

G	G \sharp A \flat	A	A \sharp B \flat	B	C
T open or T 1 or Open	T 2 3 or T 2 or 2 3	T 1 2 or T open or 1 2	T 1 or 1	T 2 or 2	T open or Open

Long Tones Warm-up

Exercise #1 - Remington from F



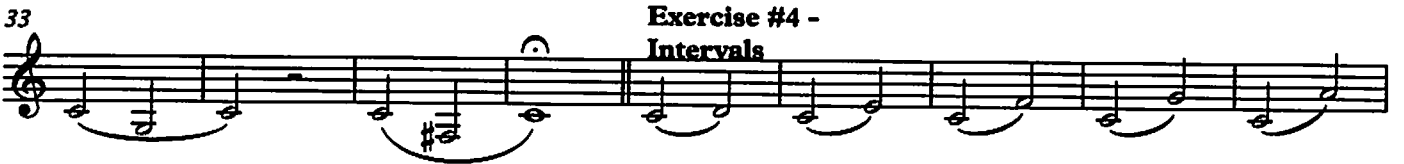
Exercise #2 - Remington from Bb



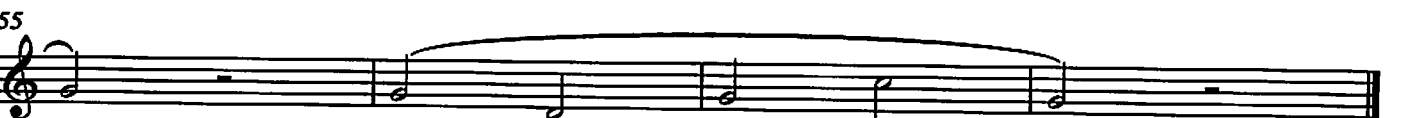
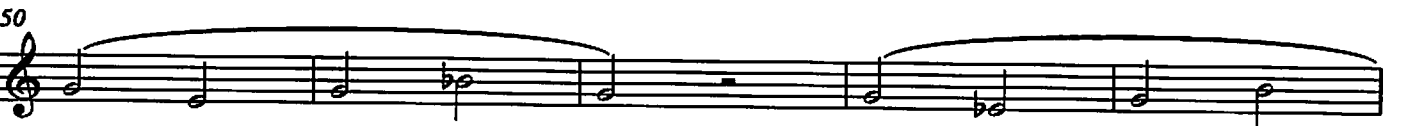
Exercise #3 - Remington from Low Bb



Exercise #4 - Intervals



Exercise #5 - Half Step Expansion



Exercise #1 - Two Note Slurs

8

15 Exercise #2 - Three Notes/Register

21

27 Exercise #3 - Octaves

35 Exercise #4

43

50

Scale Warm ups

3

Horn in F - Bb major

Legato tongue



Legato vs. Staccato



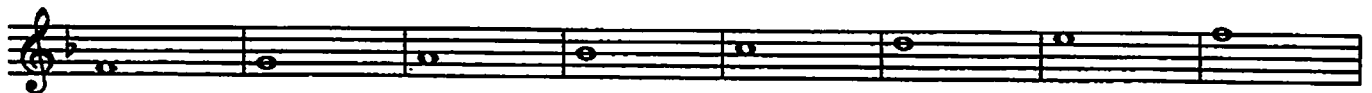
Legato tongue 2



Stagger breathe



Scale long tones



37



Legato vs. Staccato 2



Chorale in Thirds



Exercise in Thirds



Solo in Thirds

Musical notation for 'Solo in Thirds' on a single staff. It features a sequence of eighth notes with a slur over the first two measures and another slur over the next two measures, indicating a melodic line.

Up 5 Down 5

Musical notation for 'Up 5 Down 5' on a single staff. It shows an ascending scale followed by a descending scale, with slurs and accents over the notes.

Staccato syncopation

Musical notation for 'Staccato syncopation' on two staves. The first staff has a whole rest with a '2' above it, indicating a two-measure rest. The second staff shows a rhythmic pattern of eighth notes with staccato marks and syncopated accents.

Scale and Arpeggio

Musical notation for 'Scale and Arpeggio' on a single staff. It features a scale followed by an arpeggiated chord, with slurs and accents.

Scale Groove

Musical notation for 'Scale Groove' on two staves. It shows a rhythmic scale exercise with eighth notes and slurs.

Scale - Short and Fast

Musical notation for 'Scale - Short and Fast' on a single staff. It features a fast scale exercise with eighth notes and slurs.

Tuning chorale Slower

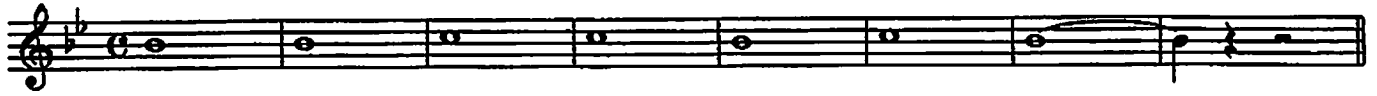
Musical notation for 'Tuning chorale Slower' on a single staff. It features a slow, sustained scale exercise with slurs and accents.

Scale Warm ups

5

Horn in F - Eb major

Legato tongue



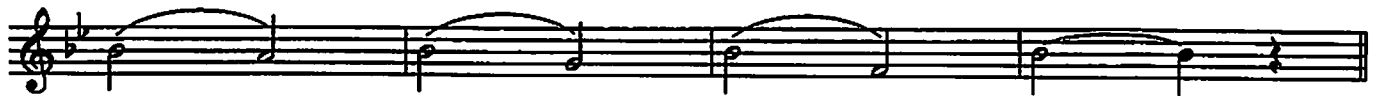
Legato vs. Staccato



Legato tongue 2



Stagger breathe



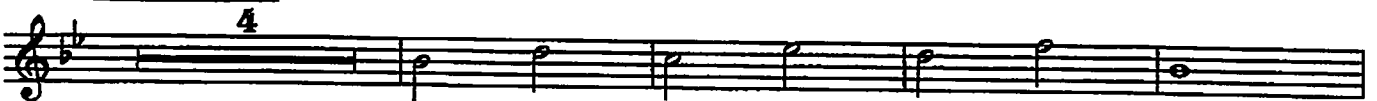
Scale long tones



Legato vs. Staccato 2



Chorale in Thirds



Exercise in Thirds



Solo in Thirds

Musical notation for 'Solo in Thirds' on a single staff. It features a melodic line in F major with a large slur covering the entire phrase.

Up 5 Down 5

Musical notation for 'Up 5 Down 5' on a single staff. It shows an ascending and then descending scale with slurs and accents.

Staccato syncopation

Musical notation for 'Staccato syncopation' on two staves. The first staff has a '2' above it, indicating a second ending. The notation consists of staccato eighth notes with syncopated rhythms.

Scale and Arpeggio

Musical notation for 'Scale and Arpeggio' on a single staff. It combines a scale with arpeggiated chords.

Scale Groove

Musical notation for 'Scale Groove' on two staves. It features a rhythmic groove with eighth-note patterns and chords.

Scale - Short and Fast

Musical notation for 'Scale - Short and Fast' on a single staff. It shows a fast, short-scale exercise with eighth notes.

Tuning chorale Slower

Musical notation for 'Tuning chorale Slower' on a single staff. It is a slow exercise with long notes and slurs.

Scale Warm ups

7

Horn in F - Ab major

Legato tongue



Legato vs. Staccato



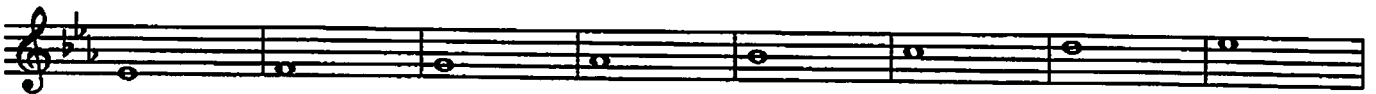
Legato tongue 2



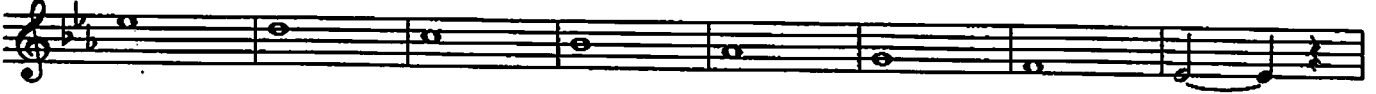
Stagger breathe



Scale long tones



37



Legato vs. Staccato 2



Chorale in Thirds



Exercise in Thirds



Solo in Thirds

Musical notation for 'Solo in Thirds' in F major, 4/4 time. It consists of a single staff with a treble clef and a key signature of one flat. The melody is written in eighth notes, with a slur over the first four measures and another slur over the last four measures.

Up 5 Down 5

Musical notation for 'Up 5 Down 5' in F major, 4/4 time. It consists of a single staff with a treble clef and a key signature of one flat. The melody is written in eighth notes, with a slur over the first four measures and another slur over the last four measures. There are accents over the notes in the fifth measure of each four-measure phrase.

Staccato syncopation

Musical notation for 'Staccato syncopation' in F major, 4/4 time. It consists of two staves with a treble clef and a key signature of one flat. The first staff has a '2' above the first measure, indicating a second ending. The melody is written in eighth notes with staccato markings and syncopated rhythms.

Scale and Arpeggio

Musical notation for 'Scale and Arpeggio' in F major, 4/4 time. It consists of a single staff with a treble clef and a key signature of one flat. The melody is written in eighth notes, with a slur over the first four measures and another slur over the last four measures.

Scale Groove

Musical notation for 'Scale Groove' in F major, 4/4 time. It consists of two staves with a treble clef and a key signature of one flat. The melody is written in eighth notes, with a slur over the first four measures and another slur over the last four measures. The second staff features a more complex rhythmic pattern.

Scale - Short and Fast

Musical notation for 'Scale - Short and Fast' in F major, 4/4 time. It consists of a single staff with a treble clef and a key signature of one flat. The melody is written in eighth notes, with a slur over the first four measures and another slur over the last four measures.

Tuning chorale Slower

Musical notation for 'Tuning chorale Slower' in F major, 4/4 time. It consists of a single staff with a treble clef and a key signature of one flat. The melody is written in half notes, with a slur over the first four measures and another slur over the last four measures.

Scale Warm ups

9

Horn in F - F major

Legato tongue

A single musical staff in treble clef with a common time signature. It contains a sequence of notes: F4, G4, A4, B4, C5, B4, A4, G4, F4, with a slur over the final four notes.

Legato vs. Staccato

A single musical staff in treble clef with a common time signature. It contains a sequence of notes: F4, G4, A4, B4, C5, B4, A4, G4, F4, with slurs and staccato markings alternating.

Legato tongue 2

A single musical staff in treble clef with a common time signature. It contains a sequence of notes: F4, G4, A4, B4, C5, B4, A4, G4, F4, with slurs over groups of notes.

Stagger breathe

A single musical staff in treble clef with a common time signature. It contains a sequence of notes: F4, G4, A4, B4, C5, B4, A4, G4, F4, with slurs and breath marks.

Scale long tones

A single musical staff in treble clef with a common time signature. It contains a sequence of notes: F4, G4, A4, B4, C5, B4, A4, G4, F4, with long note values.

37

A single musical staff in treble clef with a common time signature. It contains a sequence of notes: F4, G4, A4, B4, C5, B4, A4, G4, F4, with long note values.

Legato vs. Staccato 2

A single musical staff in treble clef with a common time signature. It contains a sequence of notes: F4, G4, A4, B4, C5, B4, A4, G4, F4, with slurs and staccato markings.

53

A single musical staff in treble clef with a common time signature. It contains a sequence of notes: F4, G4, A4, B4, C5, B4, A4, G4, F4, with slurs and staccato markings.

Chorale in Thirds

A single musical staff in treble clef with a common time signature. It contains a sequence of notes: F4, G4, A4, B4, C5, B4, A4, G4, F4, with a '4' above the first measure.

Exercise in Thirds

A single musical staff in treble clef with a common time signature. It contains a sequence of notes: F4, G4, A4, B4, C5, B4, A4, G4, F4, with slurs and staccato markings.

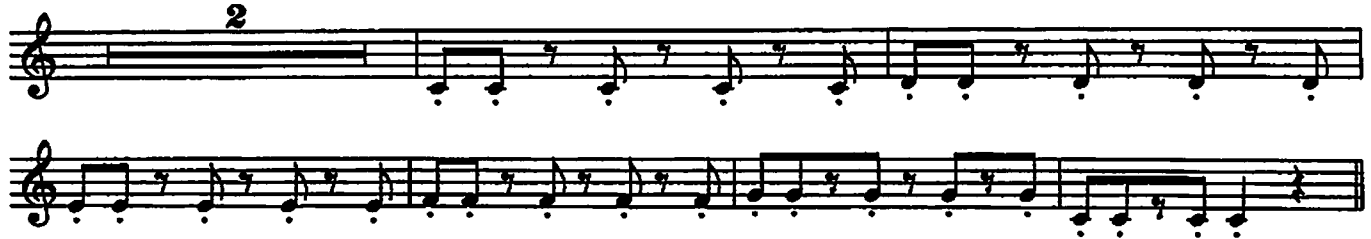
Solo in Thirds



Up 5 Down 5



Staccato syncopation



Scale and Arpeggio



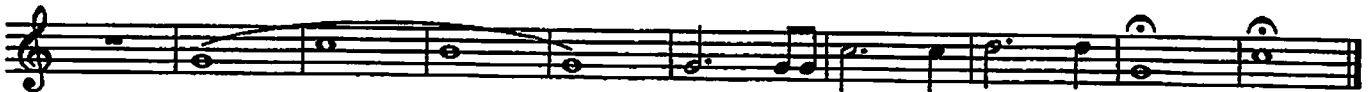
Scale Groove



Scale - Short and Fast



Tuning chorale Slower





Band Basics in Bb

Developing Ensemble Sound and Technique

Horn in F

John McAllister

Bb Scale

Listen to the Sections

Solidify the Key

Technique #1

Technique #2

Chorale

Band Basics in Eb

Developing Ensemble Sound and Technique

Horn in F

John McAllister

Eb Scale

Musical staff for Eb Scale, measures 1-8. The key signature has two flats (Bb and Eb). The scale is written in a single line on a treble clef staff. Measure numbers 2, 3, 4, 5, 6, 7, and 8 are indicated above the staff. There are flat accidentals (b) under the notes in measures 1, 3, 5, and 7.

Listen to the Sections

Musical staff for Listen to the Sections, measures 9-17. The key signature has two flats. Measure numbers 9, 11, 12, 13, 16, and 17 are indicated above the staff. Section numbers 2 and 3 are placed above the staff. Below the staff, the following sections are labeled: *Woodwind Choir* (measures 9-11), *Brass Choir* (measures 12-13), *Percussion Section* (measures 16-17), and *Full Band* (measures 17-18).

Solidify the Key

Musical staff for Solidify the Key, measures 18-25. The key signature has two flats. Measure numbers 18, 19, 20, 21, 22, 23, 24, and 25 are indicated above the staff. The music consists of a series of chords and single notes in the key of Eb.

Technique #1

Musical staff for Technique #1, measures 26-29. The key signature has two flats. Measure numbers 26, 27, 28, and 29 are indicated above the staff. The music features a continuous eighth-note pattern.

Musical staff for Technique #1 continuation, measures 30-33. The key signature has two flats. Measure numbers 30, 31, 32, and 33 are indicated above the staff. The music continues with the eighth-note pattern from the previous section.

Technique #2

Musical staff for Technique #2, measures 34-37. The key signature has two flats. Measure numbers 34, 35, 36, and 37 are indicated above the staff. The music features a continuous eighth-note pattern.

Musical staff for Chorus, measures 38-41. The key signature has two flats. Measure numbers 38, 39, 40, and 41 are indicated above the staff. The music features a series of chords and single notes.

Musical staff for Chorus continuation, measures 42-47. The key signature has two flats. Measure numbers 42, 43, 44, 45, 46, and 47 are indicated above the staff. The music continues with chords and single notes.

Horn in F

Band Basics in Ab

Developing Ensemble Sound and Technique

John McAllister

Bb Scale

Musical notation for the Bb Scale, measures 1 through 8. The scale is written in a treble clef with a key signature of two flats (Bb and Eb) and a 4/4 time signature. The notes are: 1. Bb, 2. Bb, 3. Bb, 4. Bb, 5. Bb, 6. Bb, 7. Bb, 8. Bb. There are some additional notes and rests in the lower register.

Listen to the Sections

Musical notation for 'Listen to the Sections', measures 9 through 17. The notation is divided into four sections: 9-11 (Woodwind Choir), 12-13 (Brass Choir), 14-16 (Percussion Section), and 17 (Full Band). Each section contains a few notes or rests.

Solidify the Key

Musical notation for 'Solidify the Key', measures 18 through 25. The notation consists of a single melodic line with various note values and rests.

Technique #1

Musical notation for 'Technique #1', measures 26 through 29. This section features a complex rhythmic pattern with many sixteenth notes.

Musical notation for 'Technique #1', measures 30 through 33. This section continues the complex rhythmic pattern from the previous measures.

Technique #2

Musical notation for 'Technique #2', measures 34 through 37. This section features a complex rhythmic pattern with many sixteenth notes.

Chorale

Musical notation for 'Chorale', measures 38 through 41. This section features a complex rhythmic pattern with many sixteenth notes.

Musical notation for 'Chorale', measures 42 through 47. This section continues the complex rhythmic pattern from the previous measures.

Horn in F

Band Basics in F

Developing Ensemble Sound and Technique

John McAllister

Eb Scale

Musical notation for the Eb Scale, measures 1 through 8. The scale is written in treble clef with a key signature of one flat (Bb) and a 4/4 time signature. The notes are: 1. C4, 2. D4, 3. Eb4, 4. E4, 5. F4, 6. G4, 7. Ab4, 8. A4.

Listen to the Sections

Musical notation for 'Listen to the Sections', measures 9 through 17. The notation includes rests for the Woodwind Choir (measures 9-10), Brass Choir (measures 11-12), Percussion Section (measures 13-15), and Full Band (measures 16-17). Measure numbers 9, 11, 12, 13, 16, and 17 are indicated above the staff.

Solidify the Key

Musical notation for 'Solidify the Key', measures 18 through 25. The notation features a melodic line in treble clef with a key signature of one flat. Measure numbers 18, 19, 20, 21, 22, 23, 24, and 25 are indicated above the staff.

Technique #1

Musical notation for 'Technique #1', measures 26 through 29. The notation shows a continuous eighth-note pattern in treble clef. Measure numbers 26, 27, 28, and 29 are indicated above the staff.

Musical notation for 'Technique #1', measures 30 through 33. The notation continues the eighth-note pattern from the previous section. Measure numbers 30, 31, 32, and 33 are indicated above the staff.

Technique #2

Musical notation for 'Technique #2', measures 34 through 38. The notation shows a more complex eighth-note pattern in treble clef. Measure numbers 34, 35, 36, 37, and 38 are indicated above the staff.

Chorale

Musical notation for 'Chorale', measures 39 through 42. The notation features a melodic line in treble clef with a key signature of one flat. Measure numbers 39, 40, 41, and 42 are indicated above the staff.

Musical notation for 'Chorale', measures 43 through 47. The notation continues the melodic line from the previous section. Measure numbers 43, 44, 45, 46, and 47 are indicated above the staff.

Ⓣ

Horn

Chorale No. 1

Johann Crüger (1598-1663)

Soprano

Moderately Slow ♩=60

Musical staff for Soprano voice, measures 1-6. The staff is in G major (one sharp) and 4/4 time. The tempo is 'Moderately Slow' with a metronome marking of ♩=60. The melody consists of quarter and eighth notes.

7

Musical staff for Soprano voice, measures 7-12. The staff continues the melody from the previous system, ending with a double bar line and repeat dots.

Alto

Moderately Slow ♩=60

Musical staff for Alto voice, measures 1-6. The staff is in G major and 4/4 time. The tempo is 'Moderately Slow' with a metronome marking of ♩=60. The melody consists of quarter and eighth notes.

7

Musical staff for Alto voice, measures 7-12. The staff continues the melody from the previous system, ending with a double bar line and repeat dots.

Tenor

Moderately Slow ♩=60

Musical staff for Tenor voice, measures 1-6. The staff is in G major and 4/4 time. The tempo is 'Moderately Slow' with a metronome marking of ♩=60. The melody consists of quarter and eighth notes.

7

Musical staff for Tenor voice, measures 7-12. The staff continues the melody from the previous system, ending with a double bar line and repeat dots.

Bass

Moderately Slow ♩=60

Musical staff for Bass voice, measures 1-6. The staff is in G major and 4/4 time. The tempo is 'Moderately Slow' with a metronome marking of ♩=60. The melody consists of quarter and eighth notes.

7

Musical staff for Bass voice, measures 7-12. The staff continues the melody from the previous system, ending with a double bar line and repeat dots.

Horn

Exhilarate 2

Soprano

Moderately Slow $\text{♩} = 70$

Musical staff for Soprano Horn, measures 1-6. The staff is in treble clef with a key signature of one flat (Bb) and a common time signature (C). The tempo is 'Moderately Slow' with a metronome marking of 70. The music consists of a sequence of eighth and quarter notes.

Musical staff for Soprano Horn, measures 7-12. The staff continues the melody from the previous staff, ending with a double bar line and repeat dots.

Alto

Moderately Slow $\text{♩} = 70$

Musical staff for Alto Horn, measures 1-6. The staff is in treble clef with a key signature of one flat (Bb) and a common time signature (C). The tempo is 'Moderately Slow' with a metronome marking of 70. The music consists of a sequence of eighth and quarter notes.

Musical staff for Alto Horn, measures 7-12. The staff continues the melody from the previous staff, ending with a double bar line and repeat dots.

Tenor

Moderately Slow $\text{♩} = 70$

Musical staff for Tenor Horn, measures 1-6. The staff is in treble clef with a key signature of one flat (Bb) and a common time signature (C). The tempo is 'Moderately Slow' with a metronome marking of 70. The music consists of a sequence of eighth and quarter notes.

Musical staff for Tenor Horn, measures 7-12. The staff continues the melody from the previous staff, ending with a double bar line and repeat dots. A flat symbol (b) is present under the eighth measure.

Bass

Moderately Slow $\text{♩} = 70$

Musical staff for Bass Horn, measures 1-6. The staff is in treble clef with a key signature of one flat (Bb) and a common time signature (C). The tempo is 'Moderately Slow' with a metronome marking of 70. The music consists of a sequence of eighth and quarter notes.

Musical staff for Bass Horn, measures 7-12. The staff continues the melody from the previous staff, ending with a double bar line and repeat dots. A flat symbol (b) is present under the eighth measure.

Horn

Chorale No. 4

J.S. Bach (1685-1750)

Soprano

Moderately ♩=80

Musical staff for Soprano voice, measures 1-7. The staff is in treble clef with a key signature of one flat (B-flat) and a time signature of 4/4. The tempo is marked 'Moderately' with a metronome marking of ♩=80. The melody consists of quarter and eighth notes.

8

Musical staff for Soprano voice, measures 8-14. The staff continues the melody from the previous system, ending with a double bar line and repeat dots.

Alto

Moderately ♩=80

Musical staff for Alto voice, measures 1-7. The staff is in treble clef with a key signature of one flat (B-flat) and a time signature of 4/4. The tempo is marked 'Moderately' with a metronome marking of ♩=80. The melody consists of quarter and eighth notes.

8

Musical staff for Alto voice, measures 8-14. The staff continues the melody from the previous system, ending with a double bar line and repeat dots.

Tenor

Moderately ♩=80

Musical staff for Tenor voice, measures 1-7. The staff is in treble clef with a key signature of one flat (B-flat) and a time signature of 4/4. The tempo is marked 'Moderately' with a metronome marking of ♩=80. The melody consists of quarter and eighth notes.

8

Musical staff for Tenor voice, measures 8-14. The staff continues the melody from the previous system, ending with a double bar line and repeat dots.

Bass

Moderately ♩=80

Musical staff for Bass voice, measures 1-7. The staff is in treble clef with a key signature of one flat (B-flat) and a time signature of 4/4. The tempo is marked 'Moderately' with a metronome marking of ♩=80. The melody consists of quarter and eighth notes.

8

Musical staff for Bass voice, measures 8-14. The staff continues the melody from the previous system, ending with a double bar line and repeat dots. There are some handwritten annotations below the staff, including a sharp sign and a circled 'b'.