

Flute Fingering Chart

Low B foot joint only.

B	C	C \sharp	D \flat	D	D \sharp	E \flat	E

F	F \sharp	G \flat	G	G \sharp	A \flat	A	A \sharp	B \flat

B	C	C \sharp	D \flat	D	D \sharp	E \flat	E	F
		 (lowers pitch)						

F \sharp	G \flat	G	G \sharp	A \flat	A	A \sharp	B \flat	B	C

C \sharp	D \flat	D	D \sharp	E \flat	E	F	F \sharp	G \flat	G
			 (lowers pitch)	 (lowers pitch)			 (lowers pitch)	 (lowers pitch)	

G \sharp	A \flat	A	A \sharp	B \flat	B	C	C \sharp	D \flat	D
 (lowers pitch)							 (add "gizmo" on low B foot joint only)		

(When more than one fingering is shown, the first is the most common.)

G4	G4	G4	G4	G4	G4

F4	F4	F4	F4	F4	F4

E4	E4	E4	E4	E4	E4

D4	D4	D4	D4	D4	D4

C4	C4	C4	C4	C4	C4

B3	B3	B3	B3	B3	B3

Flute Trill Fingering Chart

C B B	C B B	B B A	B B A	B B A

A B B	A B B	overflow A B G A B G	A B G	A B G

G B B	G B B	G B B	G B B	G B B

G B B	D B B	D B B	D B B	D B B	D B B

A B B	A B B	A B B	A B B	A B B	A B B

A B B	A B B	A B B	A B B	A B B	A B B

Long Tones Warm-up

Exercise #1 - Remington from F

8

Exercise #2 - Remington from Bb

15

Exercise #3 - Remington from Low Bb

23

30

Exercise #4 - Intervals

37

Exercise #5 - Half Step Expansion

44

52

Exercise #1 - Two Note Slurs

8

Exercise #2 - Three Notes/Register

15

Finger Bb,
overblow to F

21

Exercise #3 - Octaves

27

Exercise #4

36

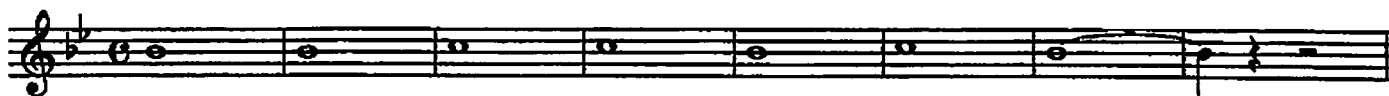
43

50

Scale Warm ups

Flutes - Bb Major

Legato tongue



Legato vs. Staccato



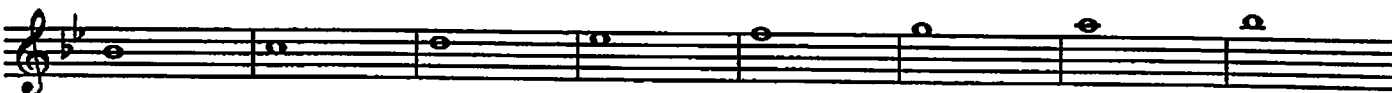
Legato tongue 2



Stagger breathe



Scale long tones



Legato vs. Staccato 2



Chorale in Thirds



Exercise in Thirds



Solo in Thirds

Musical notation for 'Solo in Thirds' on a single staff. It features a melodic line in 4/4 time with a key signature of two flats. The melody consists of eighth notes and quarter notes, with a slur over the first two measures and another slur over the last two measures.

Up 5 Down 5

Musical notation for 'Up 5 Down 5' on a single staff. It features a melodic line in 4/4 time with a key signature of two flats. The melody consists of eighth notes and quarter notes, with a slur over the first two measures and another slur over the last two measures.

Staccato syncopation

Musical notation for 'Staccato syncopation' on two staves. The top staff features a rhythmic pattern of eighth notes with staccato markings and syncopated accents. The bottom staff features a similar rhythmic pattern with staccato markings.

Scale and Arpeggio

Musical notation for 'Scale and Arpeggio' on a single staff. It features a melodic line in 4/4 time with a key signature of two flats. The melody consists of eighth notes and quarter notes, with a slur over the first two measures and another slur over the last two measures.

Scale Groove

Musical notation for 'Scale Groove' on two staves. The top staff features a rhythmic pattern of eighth notes with a steady groove. The bottom staff features a similar rhythmic pattern with a steady groove.

Scale - Short and Fast

Musical notation for 'Scale - Short and Fast' on a single staff. It features a melodic line in 4/4 time with a key signature of two flats. The melody consists of eighth notes and quarter notes, with a slur over the first two measures and another slur over the last two measures.

Tuning chorale Slower

Musical notation for 'Tuning chorale Slower' on a single staff. It features a melodic line in 4/4 time with a key signature of two flats. The melody consists of quarter notes and half notes, with a slur over the first two measures and another slur over the last two measures.

Scale Warm ups

Flutes - Eb Major

Legato tongue



A single musical staff in Eb major showing a scale exercise with a slur over the final notes.

Legato vs. Staccato



A single musical staff in Eb major showing a scale exercise with slurs and staccato markings.

Legato tongue 2



A single musical staff in Eb major showing a scale exercise with slurs and accents.

Stagger breathe



A single musical staff in Eb major showing a scale exercise with slurs and staggered breathing markings.

Scale long tones



Two musical staves in Eb major showing long tones for a scale exercise, starting at measure 37.

Legato vs. Staccato 2



Two musical staves in Eb major showing a scale exercise with slurs and staccato markings.

Chorale in Thirds



Two musical staves in Eb major showing a chorale exercise in thirds.

Exercise in Thirds



A single musical staff in Eb major showing a scale exercise in thirds.

Solo in Thirds

Musical notation for 'Solo in Thirds' in G-flat major, 4/4 time. The melody consists of eighth notes with slurs over pairs of notes, indicating a third interval.

Up 5 Down 5

Musical notation for 'Up 5 Down 5' in G-flat major, 4/4 time. The melody consists of eighth notes with slurs over groups of five notes, indicating a fifth interval.

Staccato syncopation

Musical notation for 'Staccato syncopation' in G-flat major, 4/4 time. The melody consists of eighth notes with staccato markings and syncopated rhythms.

Scale and Arpeggio

Musical notation for 'Scale and Arpeggio' in G-flat major, 4/4 time. The melody consists of eighth notes with slurs over groups of notes, indicating a scale and arpeggio exercise.

Scale Groove

Musical notation for 'Scale Groove' in G-flat major, 4/4 time. The melody consists of eighth notes with a groove-like feel, indicated by slurs and rhythmic patterns.

Scale - Short and Fast

Musical notation for 'Scale - Short and Fast' in G-flat major, 4/4 time. The melody consists of eighth notes with a short and fast feel, indicated by slurs and rhythmic patterns.

Tuning chorale Slower

Musical notation for 'Tuning chorale Slower' in G-flat major, 4/4 time. The melody consists of half notes with slurs, indicating a slower, tuning exercise.

Solo in Thirds

Musical notation for 'Solo in Thirds' in G major, 4/4 time. The melody consists of eighth notes with a slur over the entire phrase, indicating a legato performance.

Up 5 Down 5

Musical notation for 'Up 5 Down 5' in G major, 4/4 time. It features an ascending scale followed by a descending scale, both in eighth notes with a slur.

Staccato syncopation

Musical notation for 'Staccato syncopation' in G major, 4/4 time. The first staff shows eighth notes with a syncopated rhythm. The second staff shows a similar pattern with a different rhythmic variation.

Scale and Arpeggio

Musical notation for 'Scale and Arpeggio' in G major, 4/4 time. It combines an ascending scale with arpeggiated chords.

Scale Groove

Musical notation for 'Scale Groove' in G major, 4/4 time. The first staff shows eighth notes with a steady groove. The second staff shows a more complex rhythmic pattern with sixteenth notes.

Scale - Short and Fast

Musical notation for 'Scale - Short and Fast' in G major, 4/4 time. It features a short, fast scale run in eighth notes.

Tuning chorale Slower

Musical notation for 'Tuning chorale Slower' in G major, 4/4 time. It consists of a slow, sustained chordal sequence for tuning purposes.

Solo in Thirds

A single musical staff in treble clef with a key signature of one flat (B-flat). The melody consists of eighth notes, with a slur over the first four measures and another slur over the next four measures.

Up 5 Down 5

A single musical staff in treble clef with a key signature of one flat. The melody consists of eighth notes, with a slur over the first four measures and another slur over the next four measures.

Staccato syncopation

Two musical staves in treble clef with a key signature of one flat. The first staff contains eighth notes with staccato marks and syncopated rhythms. The second staff contains dotted quarter notes with staccato marks.

Scale and Arpeggio

A single musical staff in treble clef with a key signature of one flat. The melody consists of eighth notes, with a slur over the first four measures and another slur over the next four measures.

Scale Groove

Two musical staves in treble clef with a key signature of one flat. The first staff contains eighth notes with a steady groove. The second staff contains dotted quarter notes with a steady groove.

Scale - Short and Fast

A single musical staff in treble clef with a key signature of one flat. The melody consists of eighth notes, with a slur over the first four measures and another slur over the next four measures.

Tuning chorale Slower

A single musical staff in treble clef with a key signature of one flat. The melody consists of quarter notes, with a slur over the first four measures and another slur over the next four measures.

Band Basics in Bb

Developing Ensemble Sound and Technique

Bb Scale

Musical notation for the Bb scale, measures 1-8. The scale is written in treble clef with a key signature of two flats (Bb and Eb) and a 4/4 time signature. The notes are: 1. Bb, 2. B, 3. C, 4. C, 5. D, 6. D, 7. Eb, 8. Eb.

Listen to the Sections

Musical notation for 'Listen to the Sections', measures 9-17. The notation shows rests for the flute part, with labels below the staff indicating which section is playing: 9-10: *Woodwind Choir*, 11-12: *Brass Choir*, 13-14: *Percussion Section*, 15-16: *Full Band*, 17: *Full Band*.

Solidify the Key

Musical notation for 'Solidify the Key', measures 18-25. The notation shows a melodic line for the flute. Measure 21 includes a fermata. Below measure 22 is the instruction *opt. 8va*.

Technique #1

Musical notation for 'Technique #1', measures 26-29. This section features a continuous eighth-note pattern across four measures.

Musical notation for 'Technique #1', measures 30-33. This section continues the eighth-note pattern from the previous block.

Technique #2

Musical notation for 'Technique #2', measures 34-37. This section features a continuous sixteenth-note pattern across four measures.

Chorale

Musical notation for 'Chorale', measures 38-41. This section features a melodic line with a fermata at the end of measure 41.

Musical notation for 'Chorale', measures 42-47. This section continues the melodic line from the previous block.

Flute

Band Basics in Eb

Developing Ensemble Sound and Technique

John McAllister

Eb Scale

Musical notation for the Eb scale, measures 1-8. The key signature has two flats (Bb and Eb). The scale is written in a single line of music with various articulations and dynamics.

Listen to the Sections

Musical notation for 'Listen to the Sections', measures 9-17. The notation is divided into four sections: **Woodwind Choir** (measures 9-10), **Brass Choir** (measures 11-12), **Percussion Section** (measures 13-14), and **Full Band** (measures 15-17). The percussion section is indicated by a thick black bar.

Solidify the Key

Musical notation for 'Solidify the Key', measures 18-25. This section consists of a single line of music with various note values and rests.

Technique #1

Musical notation for 'Technique #1', measures 26-29. This section features a series of eighth-note patterns.

Musical notation for 'Technique #1', measures 30-33. This section continues the eighth-note patterns from the previous block.

Technique #2

Musical notation for 'Technique #2', measures 34-37. This section features a series of sixteenth-note patterns.

Chorale

Musical notation for 'Chorale', measures 38-41. This section features a series of sixteenth-note patterns.

Musical notation for 'Chorale', measures 42-47. This section continues the sixteenth-note patterns from the previous block.

Flute

Band Basics in Ab

Developing Ensemble Sound and Technique

John McAllister

Bb Scale

Musical notation for the Bb Scale, measures 1-8. The scale is written in treble clef with a key signature of two flats (Bb and Eb) and a 2/4 time signature. The notes are: 1. Bb, 2. Bb, 3. Bb, 4. Bb, 5. Bb, 6. Bb, 7. Bb, 8. Bb.

Listen to the Sections

Musical notation for Listen to the Sections, measures 9-17. The notation is in treble clef with a key signature of two flats and a 2/4 time signature. Measures 9-10 are for the *Woodwind Choir*, measures 11-13 are for the *Brass Choir*, measures 14-15 are for the *Percussion Section*, and measures 16-17 are for the *Full Band*.

Solidify the Key

Musical notation for Solidify the Key, measures 18-25. The notation is in treble clef with a key signature of two flats and a 2/4 time signature. Measure 21 includes a fermata. Measure 22 includes the instruction *opt. 8va*.

Technique #1

Musical notation for Technique #1, measures 26-29. The notation is in treble clef with a key signature of two flats and a 2/4 time signature, featuring eighth-note patterns.

Musical notation for Technique #1, measures 30-33. The notation is in treble clef with a key signature of two flats and a 2/4 time signature, continuing the eighth-note patterns.

Technique #2

Musical notation for Technique #2, measures 34-37. The notation is in treble clef with a key signature of two flats and a 2/4 time signature, featuring sixteenth-note patterns. Measure 34 includes the instruction *opt. 8va*.

Chorale

Musical notation for Chorale, measures 38-41. The notation is in treble clef with a key signature of two flats and a 2/4 time signature, featuring a melodic line with some rests.

Musical notation for Chorale, measures 42-47. The notation is in treble clef with a key signature of two flats and a 2/4 time signature, continuing the melodic line.

Flute

Band Basics in F

Developing Ensemble Sound and Technique

John McAllister

E♭ Scale

Musical notation for the E♭ scale, measures 1-8. The scale is written in a single staff with a treble clef and a key signature of two flats (B♭ and E♭). The notes are: 1. E♭, 2. F, 3. G, 4. A♭, 5. B♭, 6. C, 7. D, 8. E♭.

Listen to the Sections

Musical notation for 'Listen to the Sections', measures 9-17. The notation is in a single staff with a treble clef and a key signature of two flats. Measures 9-10 are labeled 'Woodwind Choir', measures 11-13 are labeled 'Brass Choir', measures 14-15 are labeled 'Percussion Section', and measures 16-17 are labeled 'Full Band'.

Solidify the Key

Musical notation for 'Solidify the Key', measures 18-25. The notation is in a single staff with a treble clef and a key signature of two flats. Measures 18-21 show a sequence of notes: 18. E♭, 19. F, 20. G, 21. A♭. Measures 22-25 show a sequence of notes: 22. B♭, 23. C, 24. D, 25. E♭.

Technique #1

Musical notation for 'Technique #1', measures 26-29. The notation is in a single staff with a treble clef and a key signature of two flats. It features a rhythmic pattern of eighth notes: 26. E♭, 27. F, 28. G, 29. A♭.

Musical notation for 'Technique #1', measures 30-33. The notation is in a single staff with a treble clef and a key signature of two flats. It features a rhythmic pattern of eighth notes: 30. B♭, 31. C, 32. D, 33. E♭.

Technique #2

Musical notation for 'Technique #2', measures 34-37. The notation is in a single staff with a treble clef and a key signature of two flats. It features a rhythmic pattern of eighth notes: 34. E♭, 35. F, 36. G, 37. A♭.

Chorale

Musical notation for 'Chorale', measures 38-41. The notation is in a single staff with a treble clef and a key signature of two flats. It features a rhythmic pattern of eighth notes: 38. B♭, 39. C, 40. D, 41. E♭.

Musical notation for 'Chorale', measures 42-47. The notation is in a single staff with a treble clef and a key signature of two flats. It features a rhythmic pattern of eighth notes: 42. E♭, 43. F, 44. G, 45. A♭, 46. B♭, 47. C.

© FL/Ob

Chorale No. 1

Johann Crüger (1598-1663)

Soprano

Moderately Slow ♩=60

Musical notation for the Soprano part, measures 1-7. The music is in G major (one sharp) and 4/4 time. It begins with a treble clef and a common time signature. The melody consists of quarter and eighth notes, with some rests. A repeat sign is at the end of measure 7.

Alto

Moderately Slow ♩=60

Musical notation for the Alto part, measures 1-7. The music is in G major and 4/4 time. It begins with a treble clef and a common time signature. The melody consists of quarter and eighth notes, with some rests. A repeat sign is at the end of measure 7.

Tenor

Moderately Slow ♩=60

Musical notation for the Tenor part, measures 1-7. The music is in G major and 4/4 time. It begins with a treble clef and a common time signature. The melody consists of quarter and eighth notes, with some rests. A repeat sign is at the end of measure 7.

Bass

Moderately Slow ♩=60

Musical notation for the Bass part, measures 1-7. The music is in G major and 4/4 time. It begins with a treble clef and a common time signature. The melody consists of quarter and eighth notes, with some rests. A repeat sign is at the end of measure 7.

Soprano

Moderately Slow ♩=70

Musical staff for Soprano voice, measures 1-6. The staff is in treble clef with a key signature of two flats (Bb and Eb). The tempo is 'Moderately Slow' with a metronome marking of ♩=70. The music consists of a series of quarter and eighth notes, with a repeat sign at the end of measure 6.

Musical staff for Soprano voice, measures 7-12. The staff continues from the previous section, starting with a measure rest for 7 measures. The music continues with quarter and eighth notes, ending with a repeat sign at the end of measure 12.

Alto

Moderately Slow ♩=70

Musical staff for Alto voice, measures 1-6. The staff is in treble clef with a key signature of two flats. The tempo is 'Moderately Slow' with a metronome marking of ♩=70. The music consists of a series of quarter and eighth notes, with a repeat sign at the end of measure 6.

Musical staff for Alto voice, measures 7-12. The staff continues from the previous section, starting with a measure rest for 7 measures. The music continues with quarter and eighth notes, ending with a repeat sign at the end of measure 12.

Tenor

Moderately Slow ♩=70

Musical staff for Tenor voice, measures 1-6. The staff is in treble clef with a key signature of two flats. The tempo is 'Moderately Slow' with a metronome marking of ♩=70. The music consists of a series of quarter and eighth notes, with a repeat sign at the end of measure 6.

Musical staff for Tenor voice, measures 7-12. The staff continues from the previous section, starting with a measure rest for 7 measures. The music continues with quarter and eighth notes, ending with a repeat sign at the end of measure 12.

Bass

Moderately Slow ♩=70

Musical staff for Bass voice, measures 1-6. The staff is in treble clef with a key signature of two flats. The tempo is 'Moderately Slow' with a metronome marking of ♩=70. The music consists of a series of quarter and eighth notes, with a repeat sign at the end of measure 6.

Musical staff for Bass voice, measures 7-12. The staff continues from the previous section, starting with a measure rest for 7 measures. The music continues with quarter and eighth notes, ending with a repeat sign at the end of measure 12.

Soprano

Moderately ♩=80

Musical notation for the Soprano part, measures 1-7. The staff is in treble clef with a key signature of two flats (B-flat and E-flat) and a 3/4 time signature. The tempo is marked 'Moderately' with a quarter note equal to 80 beats per minute. The melody consists of quarter and eighth notes.

Musical notation for the Soprano part, measures 8-14. The staff continues from measure 7. A double bar line with repeat dots is at the end of measure 14.

Alto

Moderately ♩=80

Musical notation for the Alto part, measures 1-7. The staff is in treble clef with a key signature of two flats and a 3/4 time signature. The tempo is marked 'Moderately' with a quarter note equal to 80 beats per minute. The melody consists of quarter and eighth notes.

Musical notation for the Alto part, measures 8-14. The staff continues from measure 7. A double bar line with repeat dots is at the end of measure 14.

Tenor

Moderately ♩=80

Musical notation for the Tenor part, measures 1-7. The staff is in treble clef with a key signature of two flats and a 3/4 time signature. The tempo is marked 'Moderately' with a quarter note equal to 80 beats per minute. The melody consists of quarter and eighth notes.

Musical notation for the Tenor part, measures 8-14. The staff continues from measure 7. A double bar line with repeat dots is at the end of measure 14.

Bass

Moderately ♩=80

Musical notation for the Bass part, measures 1-7. The staff is in treble clef with a key signature of two flats and a 3/4 time signature. The tempo is marked 'Moderately' with a quarter note equal to 80 beats per minute. The melody consists of quarter and eighth notes.

Musical notation for the Bass part, measures 8-14. The staff continues from measure 7. A double bar line with repeat dots is at the end of measure 14.