

E \flat Baritone Saxophone Fingering Chart

A	A \sharp B \flat	B	C	C \sharp D \flat	D	D \sharp E \flat	E

F	F \sharp G \flat	G	G \sharp A \flat	A	A \sharp B \flat

(raises pitch)

B	C	C \sharp D \flat	D	D \sharp E \flat	E	F

(raises pitch)

(raises pitch)

(lowers pitch)

F \sharp G \flat	G	G \sharp A \flat	A	A \sharp B \flat	B

C	C \sharp D \flat	D	D \sharp E \flat	E	F

(lowers pitch)

(Notes on gray background are suggested altissimo fingerings.)

F \sharp G \flat	G	G \sharp A \flat	A	A \sharp B \flat	B	C

Long Tones Warm-up

Exercise #1 - Remington from F



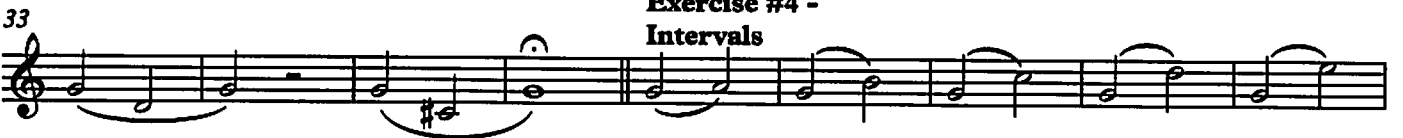
Exercise #2 - Remington from Bb



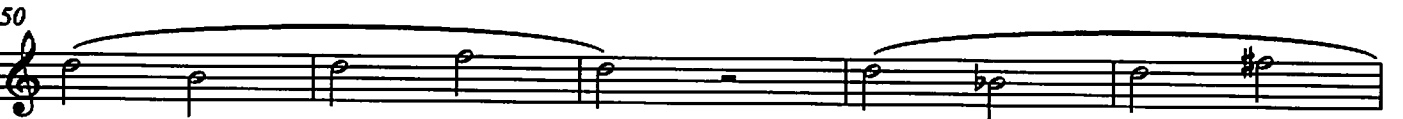
Exercise #3 - Remington from Low Bb



Exercise #4 - Intervals



Exercise #5 - Half Step Expansion



Exercise #1 - Two Note Slurs



15 Exercise #2 - Three Notes/Register

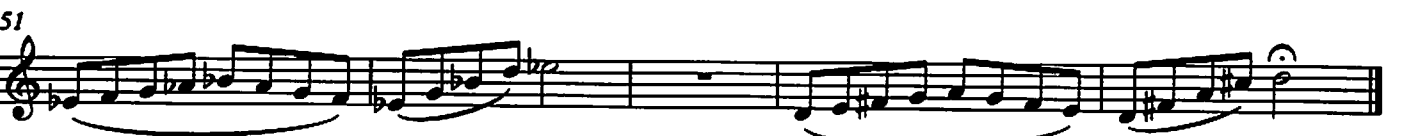


**Don't articulate*
**No octave key*

Exercise #3 - Octaves



Exercise #4



Scale Warm ups

Baritone saxophone - Bb major

Legato tongue

Musical staff for Legato tongue exercise. It features a treble clef, a key signature of one sharp (F#), and a 4/4 time signature. The melody consists of a sequence of eighth notes: G4, A4, B4, C5, B4, A4, G4, followed by a quarter rest.

Legato vs. Staccato

Musical staff for Legato vs. Staccato exercise. It features a treble clef, a key signature of one sharp (F#), and a 4/4 time signature. The melody consists of eighth notes: G4, A4, B4, C5, B4, A4, G4, followed by a quarter rest.

Legato tongue 2

Musical staff for Legato tongue 2 exercise. It features a treble clef, a key signature of one sharp (F#), and a 4/4 time signature. The melody consists of eighth notes: G4, A4, B4, C5, B4, A4, G4, followed by a quarter rest.

Stagger breathe

Musical staff for Stagger breathe exercise. It features a treble clef, a key signature of one sharp (F#), and a 4/4 time signature. The melody consists of eighth notes: G4, A4, B4, C5, B4, A4, G4, followed by a quarter rest.

Scale long tones

Musical staff for Scale long tones exercise. It features a treble clef, a key signature of one sharp (F#), and a 4/4 time signature. The melody consists of quarter notes: G4, A4, B4, C5, B4, A4, G4, followed by a quarter rest.

37

Musical staff for Scale long tones exercise continuation. It features a treble clef, a key signature of one sharp (F#), and a 4/4 time signature. The melody consists of quarter notes: G4, A4, B4, C5, B4, A4, G4, followed by a quarter rest.

Legato vs. Staccato 2

Musical staff for Legato vs. Staccato 2 exercise. It features a treble clef, a key signature of one sharp (F#), and a 4/4 time signature. The melody consists of eighth notes: G4, A4, B4, C5, B4, A4, G4, followed by a quarter rest.

Musical staff for Legato vs. Staccato 2 exercise continuation. It features a treble clef, a key signature of one sharp (F#), and a 4/4 time signature. The melody consists of eighth notes: G4, A4, B4, C5, B4, A4, G4, followed by a quarter rest.

Chorale in Thirds

Musical staff for Chorale in Thirds exercise. It features a treble clef, a key signature of one sharp (F#), and a 4/4 time signature. The melody consists of quarter notes: G4, A4, B4, C5, B4, A4, G4, followed by a quarter rest.

Musical staff for Chorale in Thirds exercise continuation. It features a treble clef, a key signature of one sharp (F#), and a 4/4 time signature. The melody consists of quarter notes: G4, A4, B4, C5, B4, A4, G4, followed by a quarter rest.

Exercise in Thirds

Musical staff for Exercise in Thirds exercise. It features a treble clef, a key signature of one sharp (F#), and a 4/4 time signature. The melody consists of quarter notes: G4, A4, B4, C5, B4, A4, G4, followed by a quarter rest.

Solo in Thirds

Musical notation for 'Solo in Thirds' in treble clef, key of D major. It features a single melodic line with eighth notes and quarter notes, with a slur over the first two measures and another slur over the last two measures.

Up 5 Down 5

Musical notation for 'Up 5 Down 5' in treble clef, key of D major. It shows an ascending scale followed by a descending scale, with slurs and accents over the notes.

Staccato syncopation

Musical notation for 'Staccato syncopation' in treble clef, key of D major. It consists of two staves of music featuring staccato eighth and quarter notes with syncopated rhythms.

Scale and Arpeggio

Musical notation for 'Scale and Arpeggio' in treble clef, key of D major. It features a scale followed by arpeggiated chords, with slurs over the scale and individual arpeggios.

Scale Groove

Musical notation for 'Scale Groove' in treble clef, key of D major. It consists of two staves of music featuring a rhythmic groove with eighth and sixteenth notes.

Scale - Short and Fast

Musical notation for 'Scale - Short and Fast' in treble clef, key of D major. It features a short, fast scale run with eighth and sixteenth notes.

Tuning chorale Slower

Musical notation for 'Tuning chorale Slower' in treble clef, key of D major. It features a slow, melodic line with half and whole notes, suitable for tuning exercises.

Scale Warm ups

Baritone saxophone - Eb major

Legato tongue



A single musical staff in treble clef with a common time signature. It contains a sequence of notes: C4, D4, E4, F4, G4, A4, B4, C5, followed by a whole rest.

Legato vs. Staccato



A single musical staff in treble clef with a common time signature. It contains a sequence of notes: C4, D4, E4, F4, G4, A4, B4, C5, followed by a whole rest. The notes are marked with slurs and staccato marks.

Legato tongue 2



A single musical staff in treble clef with a common time signature. It contains a sequence of notes: C4, D4, E4, F4, G4, A4, B4, C5, followed by a whole rest. The notes are marked with slurs and staccato marks.

Stagger breathe



A single musical staff in treble clef with a common time signature. It contains a sequence of notes: C4, D4, E4, F4, G4, A4, B4, C5, followed by a whole rest. The notes are marked with slurs and staccato marks.

Scale long tones



A single musical staff in treble clef with a common time signature. It contains a sequence of notes: C4, D4, E4, F4, G4, A4, B4, C5, followed by a whole rest.

37



A single musical staff in treble clef with a common time signature. It contains a sequence of notes: C4, D4, E4, F4, G4, A4, B4, C5, followed by a whole rest.

Legato vs. Staccato 2



A single musical staff in treble clef with a common time signature. It contains a sequence of notes: C4, D4, E4, F4, G4, A4, B4, C5, followed by a whole rest. The notes are marked with slurs and staccato marks.

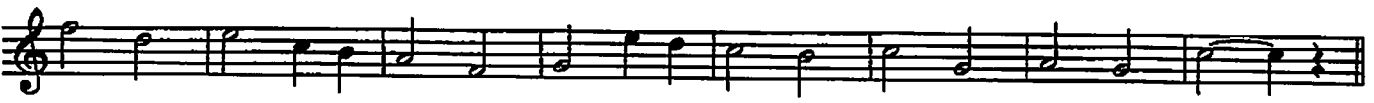


A single musical staff in treble clef with a common time signature. It contains a sequence of notes: C4, D4, E4, F4, G4, A4, B4, C5, followed by a whole rest. The notes are marked with slurs and staccato marks.

Chorale in Thirds



A single musical staff in treble clef with a common time signature. It contains a sequence of notes: C4, D4, E4, F4, G4, A4, B4, C5, followed by a whole rest. The notes are marked with slurs and staccato marks.



A single musical staff in treble clef with a common time signature. It contains a sequence of notes: C4, D4, E4, F4, G4, A4, B4, C5, followed by a whole rest. The notes are marked with slurs and staccato marks.

Exercise in Thirds



A single musical staff in treble clef with a common time signature. It contains a sequence of notes: C4, D4, E4, F4, G4, A4, B4, C5, followed by a whole rest. The notes are marked with slurs and staccato marks.

Solo in Thirds

A single musical staff in treble clef showing a melodic line with eighth notes and quarter notes, featuring a slur over the first half and a fermata at the end.

Up 5 Down 5

A single musical staff in treble clef showing a scale-like exercise with eighth notes, including a slur over the first half and a fermata at the end.

Staccato syncopation

Two musical staves in treble clef. The first staff contains a series of eighth notes with staccato marks and syncopated rhythms. The second staff continues the exercise with similar rhythmic patterns.

Scale and Arpeggio

A single musical staff in treble clef showing a scale-like exercise with eighth notes and quarter notes, featuring a slur over the first half and a fermata at the end.

Scale Groove

Two musical staves in treble clef showing a rhythmic exercise with eighth notes and quarter notes, featuring a slur over the first half and a fermata at the end.

Scale - Short and Fast

A single musical staff in treble clef showing a scale-like exercise with eighth notes and quarter notes, featuring a slur over the first half and a fermata at the end.

Tuning chorale Slower

A single musical staff in treble clef showing a slow exercise with half notes and quarter notes, featuring a slur over the first half and a fermata at the end.

Scale Warm ups

Baritone saxophone - Ab major

Legato tongue



Legato vs. Staccato



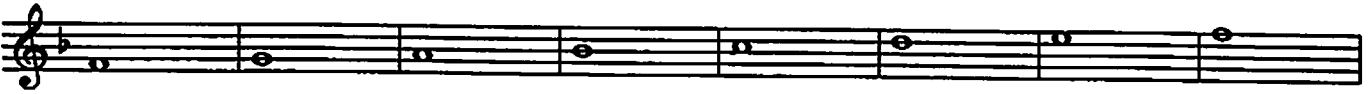
Legato tongue 2



Stagger breathe



Scale long tones



37



Legato vs. Staccato 2



Chorale in Thirds

4



Exercise in Thirds



Solo in Thirds

Musical notation for 'Solo in Thirds' on a single staff. It features a melodic line with eighth notes and quarter notes, with a slur over the first two measures and another slur over the last two measures.

Up 5 Down 5

Musical notation for 'Up 5 Down 5' on a single staff. It shows an ascending scale followed by a descending scale, with slurs and accents over the notes.

Staccato syncopation

Musical notation for 'Staccato syncopation' on two staves. The top staff contains a rhythmic pattern of eighth notes with staccato markings. The bottom staff contains a corresponding bass line with chords and staccato markings.

Scale and Arpeggio

Musical notation for 'Scale and Arpeggio' on a single staff. It features a scale with slurs and a final arpeggiated chord.

Scale Groove

Musical notation for 'Scale Groove' on two staves. The top staff shows a rhythmic scale pattern with eighth notes and rests. The bottom staff shows a bass line with chords and eighth notes.

Scale - Short and Fast

Musical notation for 'Scale - Short and Fast' on a single staff. It features a scale with eighth notes and quarter notes, ending with a final note.

Tuning chorale Slower

Musical notation for 'Tuning chorale Slower' on a single staff. It features a slow, melodic line with slurs and a final chord.

Scale Warm ups

9

Baritone saxophone - F major

Legato tongue



Legato vs. Staccato



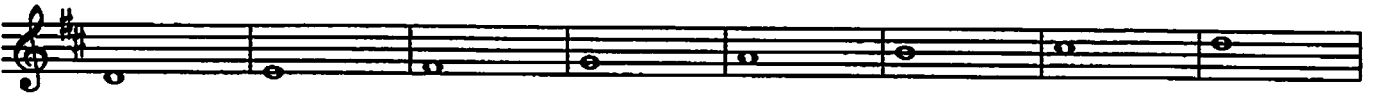
Legato tongue 2



Stagger breathe



Scale long tones



37



Legato vs. Staccato 2



Chorale in Thirds



Exercise in Thirds



Solo in Thirds

Musical notation for 'Solo in Thirds' in treble clef, key of D major. The melody consists of eighth notes in pairs, with each pair of notes forming a perfect third. The first pair is on the first line (F#4 and A4), and the second pair is on the second line (B4 and C#5). The exercise continues with similar intervals across the staff.

Up 5 Down 5

Musical notation for 'Up 5 Down 5' in treble clef, key of D major. The exercise starts with an ascending scale of eighth notes from D4 to D5, followed by a descending scale of eighth notes from D5 back to D4.

Staccato syncopation

Musical notation for 'Staccato syncopation' in treble clef, key of D major. The exercise consists of two staves of music. The first staff features eighth notes with a syncopated rhythm (e.g., quarter rest followed by an eighth note). The second staff features eighth notes with a syncopated rhythm (e.g., eighth note followed by a quarter rest).

Scale and Arpeggio

Musical notation for 'Scale and Arpeggio' in treble clef, key of D major. The exercise consists of two staves. The first staff shows an ascending scale of eighth notes from D4 to D5. The second staff shows a descending arpeggio of eighth notes from D5 down to D4.

Scale Groove

Musical notation for 'Scale Groove' in treble clef, key of D major. The exercise consists of two staves. The first staff features eighth notes with a syncopated rhythm. The second staff features eighth notes with a syncopated rhythm, continuing the groove.

Scale - Short and Fast

Musical notation for 'Scale - Short and Fast' in treble clef, key of D major. The exercise consists of two staves. The first staff features eighth notes with a syncopated rhythm. The second staff features eighth notes with a syncopated rhythm, continuing the groove.

Tuning chorale Slower

Musical notation for 'Tuning chorale Slower' in treble clef, key of D major. The exercise consists of two staves. The first staff features half notes with a syncopated rhythm. The second staff features half notes with a syncopated rhythm, continuing the groove.

11

Baritone Saxophone

Band Basics in Bb

Developing Ensemble Sound and Technique

John McAllister

Bb Scale

Musical notation for the Bb Scale, measures 2 through 8. The scale is written in treble clef with a key signature of one flat (Bb) and a 4/4 time signature. The notes are: 2 (Bb), 3 (C), 4 (D), 5 (Eb), 6 (F), 7 (G), 8 (Ab).

Listen to the Sections

Musical notation for 'Listen to the Sections', measures 9 through 17. The piece is in treble clef with a key signature of one flat and a 4/4 time signature. Measure 9 is marked 'Woodwind Choir'. Measures 11-13 are marked 'Brass Choir' and contain a whole rest. Measures 13-15 are marked 'Percussion Section' and contain a whole rest. Measure 17 is marked 'Full Band'.

Solidify the Key

Musical notation for 'Solidify the Key', measures 18 through 25. The piece is in treble clef with a key signature of one flat and a 4/4 time signature. Measure 21 has a fermata. Measure 22 has the annotation 'opt. 8va'.

Technique #1

Musical notation for 'Technique #1', measures 26 through 29. The piece is in treble clef with a key signature of one flat and a 4/4 time signature, featuring eighth-note patterns.

Musical notation for 'Technique #1', measures 30 through 33. The piece is in treble clef with a key signature of one flat and a 4/4 time signature, featuring eighth-note patterns.

Technique #2

Musical notation for 'Technique #2', measures 34 through 38. The piece is in treble clef with a key signature of one flat and a 4/4 time signature, featuring sixteenth-note patterns.

Chorale

Musical notation for 'Chorale', measures 39 through 42. The piece is in treble clef with a key signature of one flat and a 4/4 time signature, featuring a slower, more melodic line.

Musical notation for 'Chorale', measures 43 through 47. The piece is in treble clef with a key signature of one flat and a 4/4 time signature, featuring a slower, more melodic line.

Baritone Saxophone

Band Basics in Eb

Developing Ensemble Sound and Technique

John McAllister

Eb Scale

Musical notation for the Eb Scale, measures 1-8. The scale is written in treble clef with a key signature of two flats (Bb and Eb) and a 4/4 time signature. The notes are: 1. Eb, 2. E, 3. F, 4. F#, 5. G, 6. Ab, 7. A, 8. Bb.

Listen to the Sections

Musical notation for 'Listen to the Sections', measures 9-17. The notation is split into four parts: 9-10 measures for 'Woodwind Choir', 11-13 measures for 'Brass Choir' (marked with a '2'), 14-15 measures for 'Percussion Section' (marked with a '2'), and 16-17 measures for 'Full Band'.

Solidify the Key

Musical notation for 'Solidify the Key', measures 18-25. The notation is in treble clef with a key signature of two flats. It features a melodic line with a fermata over measure 21.

Technique #1

Musical notation for 'Technique #1', measures 26-29. This section consists of eighth-note patterns in treble clef with a key signature of two flats.

Musical notation for 'Technique #1' continuation, measures 30-33. This section continues the eighth-note patterns from the previous block.

Technique #2

Musical notation for 'Technique #2', measures 34-37. This section features sixteenth-note patterns in treble clef with a key signature of two flats.

Chorale

Musical notation for 'Chorale', measures 38-41. This section features a melodic line with eighth-note patterns in treble clef with a key signature of two flats.

Musical notation for 'Chorale' continuation, measures 42-47. This section continues the melodic line from the previous block, ending with a fermata over measure 47.

Band Basics in Ab

Developing Ensemble Sound and Technique

Baritone Saxophone

John McAllister

Bb Scale

Musical staff for Bb Scale, measures 2-8. The staff is in the treble clef with a key signature of two flats (Bb) and a 4/4 time signature. The notes are: 2 (Bb), 3 (Ab), 4 (G), 5 (F), 6 (Eb), 7 (D), 8 (Cb).

Listen to the Sections

Musical staff for Listen to the Sections, measures 9-17. The staff is in the treble clef with a key signature of two flats (Bb) and a 4/4 time signature. Measure 9 is labeled 'Woodwind Choir'. Measures 11-13 are labeled 'Brass Choir' with a '2' above the staff. Measures 15-17 are labeled 'Full Band'.

Solidify the Key

Musical staff for Solidify the Key, measures 18-25. The staff is in the treble clef with a key signature of two flats (Bb) and a 4/4 time signature. Measure 21 has a fermata. Measure 22 has the annotation 'opt. 8va' below it.

Technique #1

Musical staff for Technique #1, measures 26-29. The staff is in the treble clef with a key signature of two flats (Bb) and a 4/4 time signature. The notes are: 26 (Bb), 27 (Ab), 28 (G), 29 (F).

Musical staff for Technique #1, measures 30-33. The staff is in the treble clef with a key signature of two flats (Bb) and a 4/4 time signature. The notes are: 30 (Eb), 31 (D), 32 (Cb), 33 (Bb).

Technique #2

Musical staff for Technique #2, measures 34-38. The staff is in the treble clef with a key signature of two flats (Bb) and a 4/4 time signature. The notes are: 34 (Bb), 35 (Ab), 36 (G), 37 (F), 38 (Eb).

Chorale

Musical staff for Chorale, measures 39-42. The staff is in the treble clef with a key signature of two flats (Bb) and a 4/4 time signature. The notes are: 39 (Bb), 40 (Ab), 41 (G), 42 (F).

Musical staff for Chorale, measures 43-47. The staff is in the treble clef with a key signature of two flats (Bb) and a 4/4 time signature. The notes are: 43 (Eb), 44 (D), 45 (Cb), 46 (Bb), 47 (Ab).

Baritone Saxophone

Band Basics in F

Developing Ensemble Sound and Technique

John McAllister

E♭ Scale²

2 3 4 5 6 7 8

Listen to the Sections

9 10 11 13 15 16 17

Woodwind Choir Brass Choir Percussion Section Full Band

Solidify the Key

18 19 20 21 22 23 24 25

Technique #1

26 27 28 29

30 31 32 33

Technique #2

34 35 36 37

Chorale

38 39 40 41

42 43 44 45 46 47



ALTO/BSK

Chorale No. 1

Johann Crüger (1598-1663)

Soprano

Moderately Slow ♩=60

Musical notation for the Soprano part, measures 1 through 7. The notation is on a single staff with a treble clef. It begins with a treble clef and a common time signature. The melody consists of quarter and eighth notes, with some accidentals (sharps and naturals). A fermata is placed over the final note of the seventh measure.

Alto

Moderately Slow ♩=60

Musical notation for the Alto part, measures 1 through 7. The notation is on a single staff with a treble clef. It begins with a treble clef and a common time signature. The melody consists of quarter and eighth notes, with some accidentals (sharps and naturals). A fermata is placed over the final note of the seventh measure.

Tenor

Moderately Slow ♩=60

Musical notation for the Tenor part, measures 1 through 7. The notation is on a single staff with a treble clef. It begins with a treble clef and a common time signature. The melody consists of quarter and eighth notes, with some accidentals (sharps and naturals). A fermata is placed over the final note of the seventh measure.

Bass

Moderately Slow ♩=60

Musical notation for the Bass part, measures 1 through 7. The notation is on a single staff with a treble clef. It begins with a treble clef and a common time signature. The melody consists of quarter and eighth notes, with some accidentals (sharps and naturals). A fermata is placed over the final note of the seventh measure.



H70/BSK

Chorale 2

Soprano

Moderately Slow $\text{♩} = 70$

Alto

Moderately Slow $\text{♩} = 70$

Tenor

Moderately Slow $\text{♩} = 70$

Bass

Moderately Slow $\text{♩} = 70$



ATO/BSK

Chorale No. 4

J.S. Bach (1685-1750)

Soprano

Moderately ♩=80



8



Alto

Moderately ♩=80



8



Tenor

Moderately ♩=80



8



Bass

Moderately ♩=80



8

