

E♭ Alto Saxophone Fingering Chart

A♯	B♭	B	C	C♯	D♭	D	D♯	E♭	E

F	F♯	G♭	G	G♯	A♭	A	A♯	B♭	

B	C	C♯	D♭	D	D♯	E♭	E	F	

F♯	G♭	G	G♯	A♭	A	A♯	B♭	B	

C	C♯	D♭	D	D♯	E♭	E	F		

(Notes on gray background are suggested altissimo fingerings.)

F♯	G♭	G	G♯	A♭	A	A♯	B♭	B	C

Long Tones Warm-up



Exercise #1 - Remington from F

8

Exercise #2 - Remington from Bb

15

Exercise #3 - Remington from Low Bb

24

Exercise #4 - Intervals

33

Exercise #5 - Half Step Expansion

42

50

55

Exercise #1 - Two Note Slurs

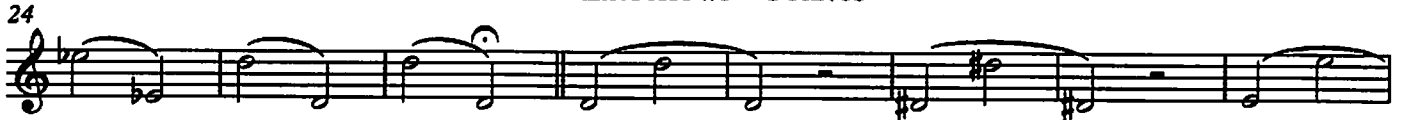


15 Exercise #2 - Three Notes/Register

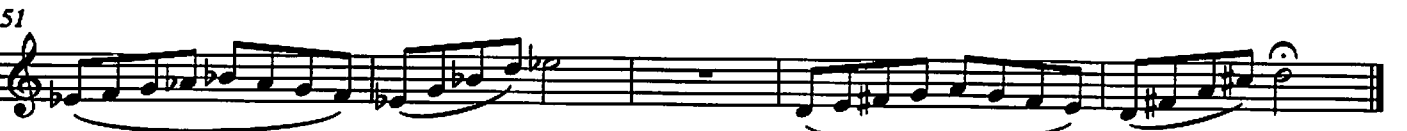


**Don't articulate
No octave key

24 Exercise #3 - Octaves



39 Exercise #4



Solo in Thirds

Musical notation for 'Solo in Thirds' in G major, featuring a melodic line with a slur over the first four measures.

Up 5 Down 5

Musical notation for 'Up 5 Down 5' in G major, showing an ascending scale followed by a descending scale with slurs.

Staccato syncopation

Musical notation for 'Staccato syncopation' in G major, featuring a rhythmic pattern of eighth notes with slurs.

Continuation of the 'Staccato syncopation' exercise, showing a rhythmic pattern of eighth notes with slurs.

Scale and Arpeggio

Musical notation for 'Scale and Arpeggio' in G major, showing a scale followed by an arpeggiated pattern.

Scale Groove

Musical notation for 'Scale Groove' in G major, featuring a rhythmic pattern of eighth notes.

Continuation of the 'Scale Groove' exercise, showing a rhythmic pattern of eighth notes.

Scale - Short and Fast

Musical notation for 'Scale - Short and Fast' in G major, featuring a rhythmic pattern of eighth notes.

Tuning chorale

Slower

Musical notation for 'Tuning chorale' in G major, featuring a slow, melodic line with a slur over the first four measures.

Scale Warm ups

Alto saxophone - Eb major



Legato tongue

Legato vs. Staccato

Legato tongue 2

Stagger breathe

Scale long tones

Legato vs. Staccato 2

Chorale in Thirds

Exercise in Thirds

Solo in Thirds

Musical notation for 'Solo in Thirds' on a single staff. It features a melodic line with eighth notes and quarter notes, with a slur over the first two measures and another slur over the last two measures.

Up 5 Down 5

Musical notation for 'Up 5 Down 5' on a single staff. It shows a scale ascending and then descending, with a slur over the entire line.

Staccato syncopation

Musical notation for 'Staccato syncopation' on a single staff. It consists of two lines of music. The first line features eighth notes with staccato marks and syncopated rhythms. The second line features quarter notes with staccato marks.

Scale and Arpeggio

Musical notation for 'Scale and Arpeggio' on a single staff. It shows a scale ascending and then descending, with a slur over the entire line.

Scale Groove

Musical notation for 'Scale Groove' on two staves. The first staff shows eighth notes with a rhythmic groove. The second staff shows a similar groove with a different rhythmic pattern.

Scale - Short and Fast

Musical notation for 'Scale - Short and Fast' on a single staff. It features a scale with eighth notes and quarter notes, with a slur over the entire line.

Tuning chorale Slower

Musical notation for 'Tuning chorale Slower' on a single staff. It features a slow, melodic line with half notes and quarter notes, with a slur over the entire line.

Solo in Thirds

Musical notation for 'Solo in Thirds' on a single staff. It features a melodic line in a key with one flat, consisting of eighth and quarter notes with slurs over groups of three notes.

Up 5 Down 5

Musical notation for 'Up 5 Down 5' on a single staff. It shows a scale ascending and then descending, with slurs and accents over the notes.

Staccato syncopation

Musical notation for 'Staccato syncopation' on a single staff. It features a rhythmic pattern of eighth notes with staccato marks and syncopated accents.

Scale and Arpeggio

Musical notation for 'Scale and Arpeggio' on a single staff. It combines a scale run with arpeggiated chords.

Scale Groove

Musical notation for 'Scale Groove' on two staves. The top staff has a rhythmic pattern of eighth notes, and the bottom staff has a corresponding scale line.

Scale - Short and Fast

Musical notation for 'Scale - Short and Fast' on a single staff. It features a rapid scale run with slurs.

Tuning chorale Slower

Musical notation for 'Tuning chorale Slower' on a single staff. It consists of a slow-moving melodic line with long slurs.

Scale Warm ups

Alto saxophone - F major

9

Legato tongue



Legato vs. Staccato



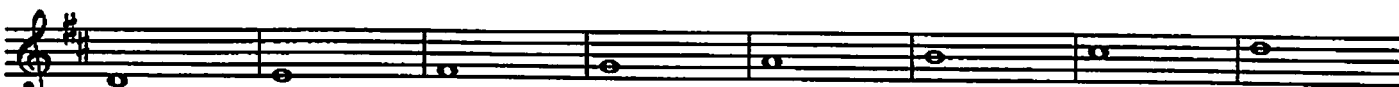
Legato tongue 2



Stagger breathe



Scale long tones



Legato vs. Staccato 2



Chorale in Thirds



Exercise in Thirds



Solo in Thirds

Musical notation for 'Solo in Thirds' in treble clef, key of D major. It features a melodic line with a slur over the first two measures and a fermata over the final note.

Up 5 Down 5

Musical notation for 'Up 5 Down 5' in treble clef, key of D major. It shows an ascending scale followed by a descending scale, with slurs and accents.

Staccato syncopation

Musical notation for 'Staccato syncopation' in treble clef, key of D major. It consists of a series of eighth notes with staccato marks and syncopated rhythms.

Continuation of the 'Staccato syncopation' exercise, showing a sequence of eighth notes with staccato marks and syncopated rhythms.

Scale and Arpeggio

Musical notation for 'Scale and Arpeggio' in treble clef, key of D major. It features a scale followed by an arpeggiated pattern.

Scale Groove

Musical notation for 'Scale Groove' in treble clef, key of D major. It shows a scale with a rhythmic groove.

Continuation of the 'Scale Groove' exercise, showing a rhythmic pattern of eighth notes.

Scale - Short and Fast

Musical notation for 'Scale - Short and Fast' in treble clef, key of D major. It features a short, fast scale run.

Tuning chorale Slower

Musical notation for 'Tuning chorale Slower' in treble clef, key of D major. It consists of a slow, melodic line with slurs and fermatas.

Alto Saxophone 1

Band Basics in Bb
Developing Ensemble Sound and Technique

John McAllister

Bb Scale

Listen to the Sections

Solidify the Key

Technique #1

Technique #2

Chorale

1/1a

Band Basics in Bb

Developing Ensemble Sound and Technique

John McAllister

Bb Scale

Musical notation for the Bb scale, measures 1-8. The scale is written in treble clef with a key signature of one flat (Bb) and a 4/4 time signature. The notes are: 1. Bb, 2. C, 3. D, 4. Eb, 5. F, 6. G, 7. Ab, 8. Bb.

Listen to the Sections

Musical notation for 'Listen to the Sections', measures 9-17. The notation shows rests for different sections: 9-10: Woodwind Choir; 11-12: Brass Choir; 13-14: Percussion Section; 15-17: Full Band.

Solidify the Key

Musical notation for 'Solidify the Key', measures 18-25. The notation includes a first ending bracket and the instruction 'opt. 8va' below measure 22.

Technique #1

Musical notation for 'Technique #1', measures 26-29. The notation shows a series of eighth notes in a descending pattern.

Musical notation for 'Technique #1' continuation, measures 30-33. The notation shows a series of eighth notes in a descending pattern.

Technique #2

Musical notation for 'Technique #2', measures 34-38. The notation shows a series of eighth notes in a descending pattern.

Chorale

Musical notation for 'Chorale', measures 39-42. The notation shows a series of eighth notes in a descending pattern.

Musical notation for 'Chorale' continuation, measures 43-47. The notation shows a series of eighth notes in a descending pattern.

Alto Saxophone 1

Band Basics in Eb

Developing Ensemble Sound and Technique

John McAllister

Eb Scale

Musical notation for the Eb Scale, measures 1 through 8. The scale is written in treble clef with a key signature of two flats (Bb and Eb) and a 4/4 time signature. The notes are: 1. Eb, 2. E, 3. F, 4. F#, 5. G, 6. Ab, 7. A, 8. Bb.

Listen to the Sections

Musical notation for 'Listen to the Sections', measures 9 through 17. The notation is on a single staff with measure numbers 9, 10, 11, 13, 15, 16, and 17. Below the staff, the sections are labeled: 'Woodwind Choir' (measures 9-10), 'Brass Choir' (measures 11-12), 'Percussion Section' (measures 13-14), and 'Full Band' (measures 15-17). Measures 11 and 13 contain rests.

Solidify the Key

Musical notation for 'Solidify the Key', measures 18 through 25. The notation is on a single staff with measure numbers 18, 19, 20, 21, 22, 23, 24, and 25. The key signature remains two flats.

Technique #1

Musical notation for 'Technique #1', measures 26 through 29. The notation is on a single staff with measure numbers 26, 27, 28, and 29. It features eighth-note patterns.

Musical notation for 'Technique #1', measures 30 through 33. The notation is on a single staff with measure numbers 30, 31, 32, and 33. It continues the eighth-note patterns from the previous section.

Technique #2

Musical notation for 'Technique #2', measures 34 through 37. The notation is on a single staff with measure numbers 34, 35, 36, and 37. It features sixteenth-note patterns.

Chorale

Musical notation for 'Chorale', measures 38 through 41. The notation is on a single staff with measure numbers 38, 39, 40, and 41. It features a slower, more melodic line.

Musical notation for 'Chorale', measures 42 through 47. The notation is on a single staff with measure numbers 42, 43, 44, 45, 46, and 47. It continues the melodic line from the previous section.

Alto Saxophone 2

Band Basics in Eb

Developing Ensemble Sound and Technique

John McAllister

Eb Scale

Musical notation for the Eb Scale, measures 1 through 8. The scale is written in treble clef with a key signature of two flats (Bb and Eb) and a 4/4 time signature. The notes are: 1. Eb, 2. E, 3. F, 4. F#, 5. G, 6. Ab, 7. A, 8. Bb.

Listen to the Sections

Musical notation for 'Listen to the Sections', measures 9 through 17. The notation is in treble clef with a 4/4 time signature. Measures 9-10 are labeled 'Woodwind Choir'. Measures 11-13 are labeled 'Brass Choir' and contain a whole rest. Measures 14-15 are labeled 'Percussion Section' and contain a whole rest. Measures 16-17 are labeled 'Full Band' and contain a whole rest.

Solidify the Key

Musical notation for 'Solidify the Key', measures 18 through 25. The notation is in treble clef with a 4/4 time signature. Measures 18-21 show a descending scale: Eb, E, F, F#, G, Ab, A, Bb. Measures 22-25 show an ascending scale: Bb, B, C, C#, D, Eb, E, F.

Technique #1

Musical notation for 'Technique #1', measures 26 through 29. The notation is in treble clef with a 4/4 time signature. It features eighth-note patterns: 26. Eb, E, F, F#, G, Ab, A, Bb; 27. Bb, B, C, C#, D, Eb, E, F; 28. F, F#, G, Ab, A, Bb, B, C; 29. C, C#, D, Eb, E, F, F#, G.

Musical notation for 'Technique #1', measures 30 through 33. The notation is in treble clef with a 4/4 time signature. It features eighth-note patterns: 30. G, Ab, A, Bb, B, C, C#, D; 31. D, Eb, E, F, F#, G, Ab, A; 32. A, Bb, B, C, C#, D, Eb, E; 33. E, F, F#, G, Ab, A, Bb, B.

Technique #2

Musical notation for 'Technique #2', measures 34 through 37. The notation is in treble clef with a 4/4 time signature. It features sixteenth-note patterns: 34. Eb, E, F, F#, G, Ab, A, Bb; 35. Bb, B, C, C#, D, Eb, E, F; 36. F, F#, G, Ab, A, Bb, B, C; 37. C, C#, D, Eb, E, F, F#, G.

Chorale

Musical notation for 'Chorale', measures 38 through 41. The notation is in treble clef with a 4/4 time signature. Measures 38-39: Eb, E, F, F#, G, Ab, A, Bb. Measures 40-41: Bb, B, C, C#, D, Eb, E, F.

Musical notation for 'Chorale', measures 42 through 47. The notation is in treble clef with a 4/4 time signature. Measures 42-46: Eb, E, F, F#, G, Ab, A, Bb. Measure 47: Bb, B, C, C#, D, Eb, E, F.

Alto Saxophone 1

Band Basics in Ab
Developing Ensemble Sound and Technique

John McAllister

Bb Scale

Listen to the Sections

Solidify the Key

Technique #1

Technique #2

Chorale

Band Basics in Ab

Developing Ensemble Sound and Technique

John McAllister

Bb Scale

Musical staff for Bb Scale, measures 1-8. The staff is in the key of Bb and 4/4 time. The notes are: 1. Bb, 2. C, 3. D, 4. Eb, 5. F, 6. G, 7. Ab, 8. Bb.

Listen to the Sections

Musical staff for Listen to the Sections, measures 9-17. The staff is in the key of Bb and 4/4 time. The notes are: 9. Bb, 10. C, 11. D, 12. Eb, 13. F, 14. G, 15. Ab, 16. Bb, 17. C. The sections are labeled: Woodwind Choir (measures 9-10), Brass Choir (measures 11-12), Percussion Section (measures 13-14), and Full Band (measures 15-17).

Solidify the Key

Musical staff for Solidify the Key, measures 18-25. The staff is in the key of Bb and 4/4 time. The notes are: 18. Bb, 19. C, 20. D, 21. Eb, 22. F, 23. G, 24. Ab, 25. Bb. The section is labeled: opt. 8va (measures 22-23).

Technique #1

Musical staff for Technique #1, measures 26-29. The staff is in the key of Bb and 4/4 time. The notes are: 26. Bb, 27. C, 28. D, 29. Eb.

Musical staff for Technique #1, measures 30-33. The staff is in the key of Bb and 4/4 time. The notes are: 30. Bb, 31. C, 32. D, 33. Eb.

Technique #2

Musical staff for Technique #2, measures 34-38. The staff is in the key of Bb and 4/4 time. The notes are: 34. Bb, 35. C, 36. D, 37. Eb, 38. F.

Chorale

Musical staff for Chorale, measures 39-42. The staff is in the key of Bb and 4/4 time. The notes are: 39. Bb, 40. C, 41. D, 42. Eb.

Musical staff for Chorale, measures 43-47. The staff is in the key of Bb and 4/4 time. The notes are: 43. Bb, 44. C, 45. D, 46. Eb, 47. F.

Alto Saxophone 1

Band Basics in F

Developing Ensemble Sound and Technique

John McAllister

E♭ Scale²

3 4 5 6 7 8

Listen to the Sections

9 10 11 13 15 16 17

Woodwind Choir Brass Choir Percussion Section Full Band

Solidify the Key

18 19 20 21 22 23 24 25

Technique #1

26 27 28 29

30 31 32 33

Technique #2

34 35 36 37

Chorale

38 39 40 41

42 43 44 45 46 47

Alto Saxophone 2

Band Basics in F

Developing Ensemble Sound and Technique

John McAllister

E♭ Scale 2

1 2 3 4 5 6 7 8

Listen to the Sections

9 10 11 12 13 14 15 16 17

Woodwind Choir *Brass Choir* *Percussion Section* *Full Band*

Solidify the Key

18 19 20 21 22 23 24 25

Technique #1

26 27 28 29

30 31 32 33

Technique #2

34 35 36 37

Chorale

38 39 40 41

42 43 44 45 46 47

♭

ATTO/BSK

Chorale No. 1

Johann Crüger (1598-1663)

Soprano

Moderately Slow ♩=60

Musical staff for Soprano, measures 1-6. The staff is in treble clef with a key signature of one flat (Bb). The tempo is 'Moderately Slow' with a metronome marking of ♩=60. The melody consists of quarter and eighth notes.

Musical staff for Soprano, measures 7-12. The staff continues the melody from the previous system, starting with a measure rest for 7 measures.

Alto

Moderately Slow ♩=60

Musical staff for Alto, measures 1-6. The staff is in treble clef with a key signature of one flat (Bb). The tempo is 'Moderately Slow' with a metronome marking of ♩=60. The melody consists of quarter and eighth notes.

Musical staff for Alto, measures 7-12. The staff continues the melody from the previous system, starting with a measure rest for 7 measures.

Tenor

Moderately Slow ♩=60

Musical staff for Tenor, measures 1-6. The staff is in treble clef with a key signature of one flat (Bb). The tempo is 'Moderately Slow' with a metronome marking of ♩=60. The melody consists of quarter and eighth notes.

Musical staff for Tenor, measures 7-12. The staff continues the melody from the previous system, starting with a measure rest for 7 measures.

Bass

Moderately Slow ♩=60

Musical staff for Bass, measures 1-6. The staff is in treble clef with a key signature of one flat (Bb). The tempo is 'Moderately Slow' with a metronome marking of ♩=60. The melody consists of quarter and eighth notes.

Musical staff for Bass, measures 7-12. The staff continues the melody from the previous system, starting with a measure rest for 7 measures.



HIT0/BSX

Chorale 2

Soprano

Moderately Slow $\text{♩} = 70$

Alto

Moderately Slow $\text{♩} = 70$

Tenor

Moderately Slow $\text{♩} = 70$

Bass

Moderately Slow $\text{♩} = 70$



ATO/BSK

Chorale No. 4

J.S. Bach (1685-1750)

Soprano

Moderately ♩=80

8

Alto

Moderately ♩=80

8

Tenor

Moderately ♩=80

8

Bass

Moderately ♩=80

8