

Long Tones Warm-up



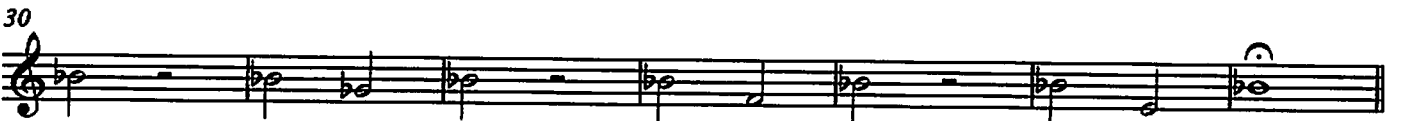
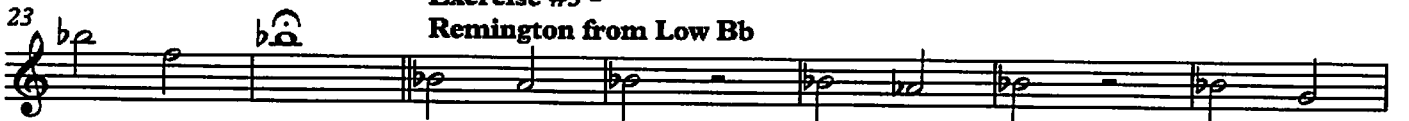
Exercise #1 - Remington from F



Exercise #2 - Remington from Bb



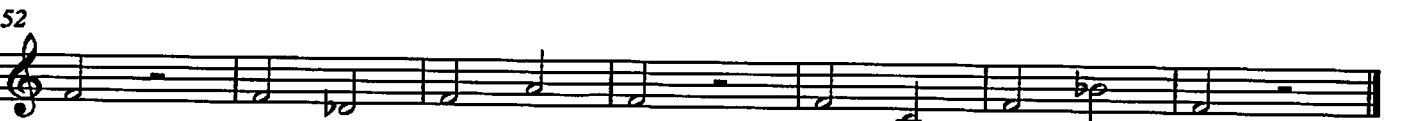
Exercise #3 - Remington from Low Bb



Exercise #4 - Intervals



Exercise #5 - Half Step Expansion



Long Tones Warm-up

McAllister

Exercise #1 - Remington from F

play either top notes OR bottom notes

Exercise #2 - Remington from Bb

Exercise #3 - Remington from Low Bb

Exercise #4 - Intervals

Exercise #5 - Half Step Expansion

Flexibility Warm-up

Exercise #1 - Two Note Slurs

8

15 Exercise #2 - Three Notes/Register

21

Exercise #3 - Octaves

27

Exercise #4

35

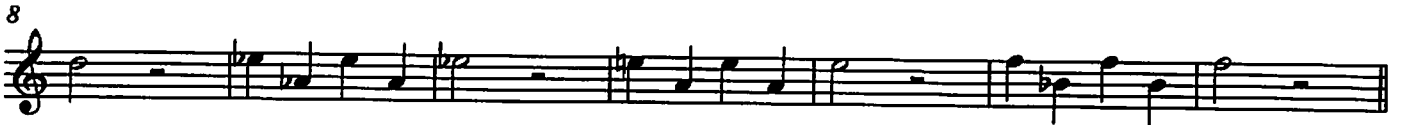
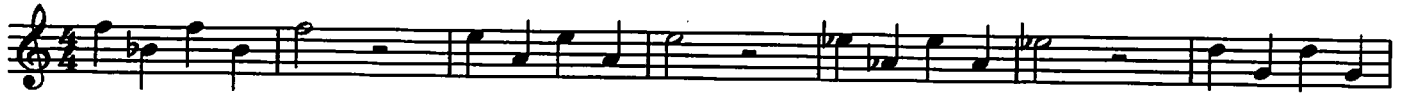
42

48

52

Flexibility Warm-up

Exercise #1 - Two Note Slurs



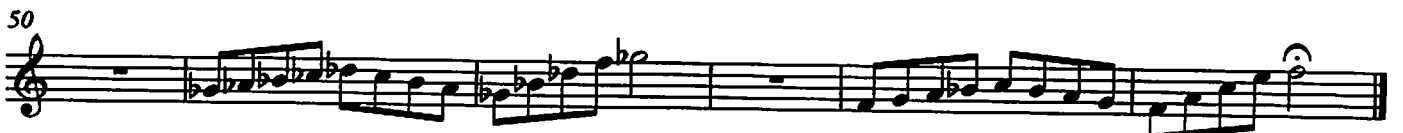
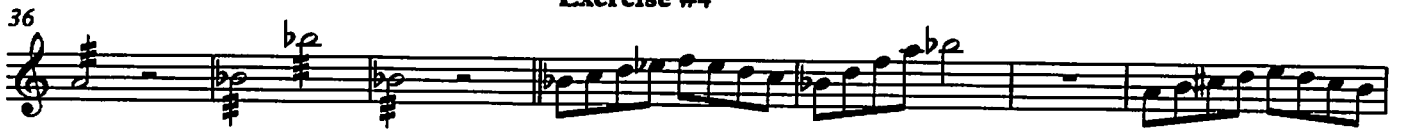
Exercise #2 - Three Notes/Register



Exercise #3 - Octaves



Exercise #4



Scale Warm ups

6th grade Keyboard percussion - Eb major

Legato tongue

Two staves of music in Eb major. The first staff shows a scale starting on G4 with a '5' above the first measure. The second staff continues the scale from G5 down to G4. The notes are connected, indicating a legato articulation.

Legato vs. Staccato

A single staff of music in Eb major showing a scale with alternating legato and staccato articulations. The first half of the scale is legato, and the second half is staccato.

Legato tongue 2

A single staff of music in Eb major showing a scale with a '2' above the first measure. The notes are connected, indicating a legato articulation.

Stagger breathe

A single staff of music in Eb major showing a scale with staggered breath marks above the notes, indicating where to breathe during the scale.

Scale long tones

Two staves of music in Eb major. The first staff shows a scale with long tones (sustained notes). The second staff continues the scale with long tones. A '37' is written above the first measure of the second staff.

Legato vs. Staccato 2

Two staves of music in Eb major showing a scale with alternating legato and staccato articulations. The first staff is legato, and the second staff is staccato.

Chorale in Thirds Tacet through Chorale

A single staff of music in Eb major showing a chorale in thirds. The notes are sustained. A '16' is written above the staff.

Exercise in Thirds

A single staff of music in Eb major showing an exercise in thirds. The notes are connected, indicating a legato articulation.

Solo in Thirds



Up 5 Down 5



Staccato syncopation



104



Scale and Arpeggio



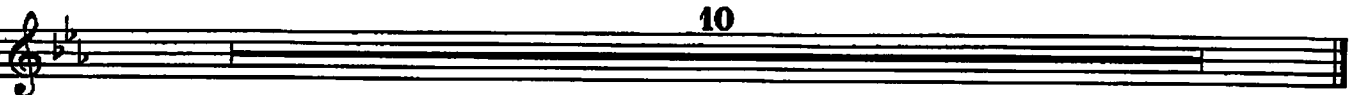
Scale Groove



Scale - Short and Fast



Tuning chorale Slower



Scale Warm ups

6th grade Keyboard percussion - Ab major

Legato tongue

Two staves of music in Ab major. The first staff starts with a treble clef and a common time signature. The melody consists of eighth notes: A4, Bb4, C5, D5, E5, F5, G5, A5, Bb5, C6, D6, E6, F6, G6, A6. The second staff starts with a bass clef and a common time signature. The melody consists of eighth notes: F4, E4, D4, C4, Bb3, A3, G3, F3, E3, D3, C3, Bb2, A2, G2, F2.

Legato vs. Staccato

One staff of music in Ab major. The exercise alternates between legato eighth notes and staccato eighth notes. The notes are: A4, Bb4, C5, D5, E5, F5, G5, A5, Bb5, C6, D6, E6, F6, G6, A6.

Legato tongue 2

One staff of music in Ab major. The exercise consists of legato eighth notes: A4, Bb4, C5, D5, E5, F5, G5, A5, Bb5, C6, D6, E6, F6, G6, A6.

Stagger breathe

One staff of music in Ab major. The exercise consists of eighth notes with a staggered breath mark: A4, Bb4, C5, D5, E5, F5, G5, A5, Bb5, C6, D6, E6, F6, G6, A6.

Scale long tones

One staff of music in Ab major. The exercise consists of long tones for each note of the scale: A4, Bb4, C5, D5, E5, F5, G5, A5, Bb5, C6, D6, E6, F6, G6, A6.

37

Continuation of the Scale long tones exercise from measure 37 to the end of the staff.

Legato vs. Staccato 2

One staff of music in Ab major. The exercise alternates between legato and staccato eighth notes: A4, Bb4, C5, D5, E5, F5, G5, A5, Bb5, C6, D6, E6, F6, G6, A6.

Continuation of the Legato vs. Staccato 2 exercise from measure 37 to the end of the staff.

Chorale in Thirds Tacet through Chorale

One staff of music in Ab major. The exercise consists of a single measure of a chorale in thirds, followed by a tacet. The number 16 is written above the staff.

Exercise in Thirds

One staff of music in Ab major. The exercise consists of eighth notes in thirds: A4, Bb4, C5, D5, E5, F5, G5, A5, Bb5, C6, D6, E6, F6, G6, A6.

Solo in Thirds

Musical staff in treble clef with a key signature of three flats (B-flat, E-flat, A-flat). The melody consists of eighth notes with a slur over the first two measures and another slur over the next two measures.

Up 5 Down 5

Musical staff in treble clef with a key signature of three flats. The melody consists of eighth notes, with a slur over the first two measures and another slur over the next two measures.

Staccato syncopation

Musical staff in treble clef with a key signature of three flats. The melody consists of eighth notes with a staccato mark and a syncopated rhythm.

104

Musical staff in treble clef with a key signature of three flats. The melody continues with eighth notes and a staccato mark.

Scale and Arpeggio

Musical staff in treble clef with a key signature of three flats. The melody consists of eighth notes with a slur over the first two measures and another slur over the next two measures.

Scale Groove

Musical staff in treble clef with a key signature of three flats. The melody consists of eighth notes with a groove-like feel.

Musical staff in treble clef with a key signature of three flats. The melody continues with eighth notes and a groove-like feel.

Scale - Short and Fast

Musical staff in treble clef with a key signature of three flats. The melody consists of eighth notes with a short and fast feel.

Tuning chorale Slower

Musical staff in treble clef with a key signature of three flats. The melody consists of a single note held for a long duration. The number 10 is written above the staff.

Scale Warm ups

6th grade Keyboard percussion - F major

Legato tongue

Two staves of music in F major. The first staff shows a scale starting on middle C, moving up and then down, with a 'tongue' articulation mark above the notes. The second staff continues the scale, starting with a measure number '5' above the first note.

Legato vs. Staccato

A single staff of music in F major showing a scale with alternating legato and staccato articulations.

Legato tongue 2

A single staff of music in F major showing a scale with legato articulation and a 'tongue' mark above the notes.

Stagger breathe

A single staff of music in F major showing a scale with staggered breathing marks above the notes.

Scale long tones

Two staves of music in F major. The first staff shows a scale with long tones. The second staff continues the scale, starting with a measure number '37' above the first note.

Legato vs. Staccato 2

Two staves of music in F major showing a scale with alternating legato and staccato articulations.

Chorale in Thirds Tacet through Chorale

A single staff of music in F major showing a chorale in thirds. The number '16' is written above the staff.

Exercise in Thirds

A single staff of music in F major showing an exercise in thirds.

Solo in Thirds



Up 5 Down 5



Staccato syncopation



104



Scale and Arpeggio



Scale Groove



Scale - Short and Fast



Tuning chorale Slower



Bells

Band Basics in Bb

Developing Ensemble Sound and Technique

John McAllister

Bb Scale

Musical notation for the Bb Scale, measures 1-8. The scale is written in Bb major (two flats) and 4/4 time. The notes are: 1. Bb, 2. C, 3. D, 4. Eb, 5. F, 6. G, 7. Ab, 8. Bb.

Listen to the Sections

Musical notation for Listen to the Sections, measures 9-17. The notation is divided into four sections: 9-11 (Woodwind Choir), 12-13 (Brass Choir), 14-15 (Percussion Section), and 16-17 (Full Band). Measure 11 has a '2' above it, and measure 16 has a '2' above it.

Solidify the Key

Musical notation for Solidify the Key, measures 18-25. The notation consists of a single melodic line with notes: 18. Bb, 19. C, 20. D, 21. Eb, 22. F, 23. G, 24. Ab, 25. Bb.

Technique #1

Musical notation for Technique #1, measures 26-29. The notation consists of a single melodic line with eighth notes: 26. Bb, 27. C, 28. D, 29. Eb.

Musical notation for Technique #1, measures 30-33. The notation consists of a single melodic line with eighth notes: 30. F, 31. G, 32. Ab, 33. Bb.

Technique #2

Musical notation for Technique #2, measures 34-37. The notation consists of a single melodic line with eighth notes: 34. Bb, 35. C, 36. D, 37. Eb.

Chorale

Musical notation for Chorale, measures 38-41. The notation consists of a single melodic line with eighth notes: 38. Bb, 39. C, 40. D, 41. Eb.

Musical notation for Chorale, measures 42-47. The notation consists of a single melodic line with eighth notes: 42. F, 43. G, 44. Ab, 45. Bb, 46. C, 47. D.

Xylophone

Band Basics in Bb

Developing Ensemble Sound and Technique

John McAllister

Bb Scale

Musical notation for the Bb scale, measures 1-8. The scale is written in treble clef with a key signature of two flats (Bb and Eb) and a 4/4 time signature. The notes are: 1. Bb, 2. C, 3. D, 4. Eb, 5. F, 6. G, 7. Ab, 8. Bb. Each note is accompanied by a chordal accompaniment.

Listen to the Sections

Musical notation for 'Listen to the Sections', measures 9-17. The notation shows rests for different sections: 9-10 (Woodwind Choir), 11-12 (Brass Choir), 13-14 (Percussion Section), 15-16 (Full Band), and 17 (Full Band). The notes are: 9. Bb, 10. C, 11. D, 12. Eb, 13. F, 14. G, 15. Ab, 16. Bb, 17. C.

Solidify the Key

Musical notation for 'Solidify the Key', measures 18-25. The notation shows a sequence of notes: 18. Bb, 19. C, 20. D, 21. Eb, 22. F, 23. G, 24. Ab, 25. Bb. Measure 21 includes the instruction *opt. 8va*.

Technique #1

Musical notation for Technique #1, measures 26-29. The notation shows a sequence of notes: 26. Bb, 27. C, 28. D, 29. Eb.

Musical notation for Technique #1, measures 30-33. The notation shows a sequence of notes: 30. Bb, 31. C, 32. D, 33. Eb.

Technique #2

Musical notation for Technique #2, measures 34-37. The notation shows a sequence of notes: 34. Bb, 35. C, 36. D, 37. Eb.

Chorale

Musical notation for Chorale, measures 38-41. The notation shows a sequence of notes: 38. Bb, 39. C, 40. D, 41. Eb.

Musical notation for Chorale, measures 42-47. The notation shows a sequence of notes: 42. Bb, 43. C, 44. D, 45. Eb, 46. F, 47. G.

Bells

Band Basics in Eb

Developing Ensemble Sound and Technique

John McAllister

Eb Scale

Musical notation for the Eb scale, measures 1-8. The scale is written in a single staff with a treble clef and a key signature of two flats (Bb and Eb). The notes are: 1. Bb, 2. C, 3. D, 4. Eb, 5. F, 6. G, 7. Ab, 8. Bb.

Listen to the Sections

Musical notation for 'Listen to the Sections', measures 9-17. The notation is divided into four sections: 9-11 (Woodwind Choir), 11-13 (Brass Choir), 13-15 (Percussion Section), and 15-17 (Full Band). Each section contains a short melodic phrase.

Solidify the Key

Musical notation for 'Solidify the Key', measures 18-25. This section consists of a single melodic line in the Eb key, starting with a whole note Eb and moving through the scale.

Technique #1

Musical notation for 'Technique #1', measures 26-29. This section features a rhythmic exercise with eighth notes and quarter notes.

Musical notation for 'Technique #1', measures 30-33. This section continues the rhythmic exercise from the previous block.

Technique #2

Musical notation for 'Technique #2', measures 34-38. This section features a rhythmic exercise with eighth notes and quarter notes, including some beamed eighth notes.

Chorale

Musical notation for 'Chorale', measures 39-42. This section consists of a single melodic line in the Eb key, featuring a mix of note values.

Musical notation for 'Chorale', measures 43-47. This section continues the chorale melody from the previous block.

Xylophone

Band Basics in Eb

Developing Ensemble Sound and Technique

John McAllister

Eb Scale

Listen to the Sections

Solidify the Key

Technique #1

Technique #2

Chorale

Band Basics in Ab

Developing Ensemble Sound and Technique

John McAllister

Bb Scale

Musical notation for the Bb Scale, measures 1-8. The scale is written in treble clef with a key signature of two flats (Bb and Eb) and a 4/4 time signature. The notes are: 1. Bb, 2. B, 3. Bb, 4. B, 5. Bb, 6. B, 7. Bb, 8. B.

Listen to the Sections

Musical notation for Listen to the Sections, measures 9-17. The notation includes rests for the Woodwind Choir (measures 9-10), Brass Choir (measures 11-12), Percussion Section (measures 13-14), and Full Band (measures 15-17). Measure numbers 9, 11, 13, 14, 15, and 17 are indicated above the staff.

Solidify the Key

Musical notation for Solidify the Key, measures 18-25. The notation consists of a single melodic line in treble clef with a key signature of two flats. Measure numbers 18, 19, 20, 21, 22, 23, 24, and 25 are indicated above the staff.

Technique #1

Musical notation for Technique #1, measures 26-29. The notation shows a continuous eighth-note pattern in treble clef with a key signature of two flats. Measure numbers 26, 27, 28, and 29 are indicated above the staff.

Musical notation for Technique #1, measures 30-33. The notation continues the eighth-note pattern from the previous section. Measure numbers 30, 31, 32, and 33 are indicated above the staff.

Technique #2

Musical notation for Technique #2, measures 34-37. The notation shows a continuous eighth-note pattern in treble clef with a key signature of two flats. Measure numbers 34, 35, 36, and 37 are indicated above the staff.

Chorale

Musical notation for Chorale, measures 38-41. The notation shows a melodic line in treble clef with a key signature of two flats. Measure numbers 38, 39, 40, and 41 are indicated above the staff.

Musical notation for Chorale, measures 42-47. The notation continues the melodic line from the previous section. Measure numbers 42, 43, 44, 45, 46, and 47 are indicated above the staff.

Xylophone

Band Basics in Ab

Developing Ensemble Sound and Technique

John McAllister

Bb Scale

Musical notation for the Bb Scale exercise, measures 1-8. The scale is written in treble clef with a key signature of two flats (Bb and Eb) and a 4/4 time signature. The notes are: 1. Bb, 2. C, 3. D, 4. Eb, 5. F, 6. G, 7. Ab, 8. Bb. The notes are grouped into pairs with a '2' above them, and there are 'b)' markings below the first and seventh notes.

Listen to the Sections

Musical notation for Listen to the Sections exercise, measures 9-17. The notation shows rests for the Woodwind Choir (measures 9-10), Brass Choir (measures 11-12), Percussion Section (measures 13-14), and Full Band (measures 15-17). The notes are: 9. Bb, 10. C, 11. D, 12. Eb, 13. F, 14. G, 15. Ab, 16. Bb, 17. C. There are '2' markings above measures 9-10, 11-12, and 15-16.

Solidify the Key

Musical notation for Solidify the Key exercise, measures 18-25. The notes are: 18. Bb, 19. C, 20. D, 21. Eb, 22. F, 23. G, 24. Ab, 25. Bb. There is an 'opt. 8va' marking below measure 21.

Technique #1

Musical notation for Technique #1 exercise, measures 26-29. The notes are: 26. Bb, 27. C, 28. D, 29. Eb.

Musical notation for Technique #1 exercise, measures 30-33. The notes are: 30. F, 31. G, 32. Ab, 33. Bb.

Technique #2

Musical notation for Technique #2 exercise, measures 34-37. The notes are: 34. Bb, 35. C, 36. D, 37. Eb.

Chorale

Musical notation for Chorale exercise, measures 38-41. The notes are: 38. Bb, 39. C, 40. D, 41. Eb.

Musical notation for Chorale exercise, measures 42-47. The notes are: 42. F, 43. G, 44. Ab, 45. Bb, 46. C, 47. D.

Bells

Band Basics in F

Developing Ensemble Sound and Technique

John McAllister

Eb Scale

Musical notation for the Eb Scale, measures 1 through 8. The scale is written in a single staff in the key of E-flat major (F major with one flat). The notes are: 1. F, 2. G, 3. A-flat, 4. B-flat, 5. C, 6. D, 7. E-flat, 8. F.

Listen to the Sections

Musical notation for 'Listen to the Sections', measures 9 through 17. The notation is divided into four sections: measures 9-11 are marked '2' and labeled 'Woodwind Choir'; measures 12-13 are marked '2' and labeled 'Brass Choir'; measures 14-15 are labeled 'Percussion Section'; and measures 16-17 are marked '2' and labeled 'Full Band'.

Solidify the Key

Musical notation for 'Solidify the Key', measures 18 through 25. The notation consists of a single staff with notes and rests, reinforcing the Eb scale.

Technique #1

Musical notation for 'Technique #1', measures 26 through 29. The notation features eighth-note patterns in a single staff.

Musical notation for 'Technique #1', measures 30 through 33. The notation continues the eighth-note patterns from the previous section.

Technique #2

Musical notation for 'Technique #2', measures 34 through 38. The notation features sixteenth-note patterns in a single staff.

Chorale

Musical notation for 'Chorale', measures 39 through 42. The notation consists of a single staff with notes and rests.

Musical notation for 'Chorale', measures 43 through 47. The notation continues the chorale melody from the previous section.

Xylophone

Band Basics in F

Developing Ensemble Sound and Technique

John McAllister

E♭ Scale

Listen to the Sections

Solidify the Key

Technique #1

Technique #2

Chorale