

B♭ Tenor Saxophone Fingering Chart

--	--	--	--	--	--

--	--	--	--	--	--

--	--	--	--	--	--

--	--	--	--	--	--

--	--	--	--	--	--

--	--	--	--	--	--

(Notes on gray background are suggested alternate fingerings.)

Long Tones Warm-up

Exercise #1 - Remington from F



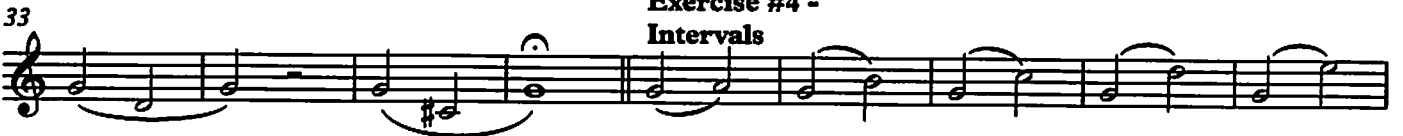
Exercise #2 - Remington from Bb



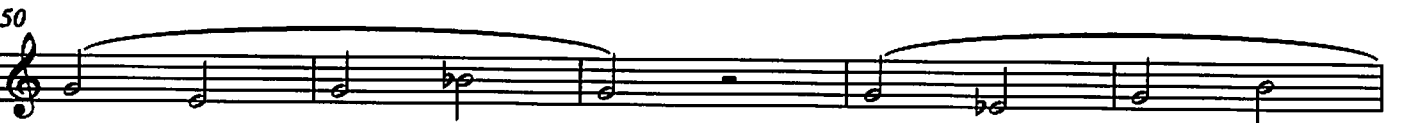
Exercise #3 - Remington from Low Bb



Exercise #4 - Intervals



Exercise #5 - Half Step Expansion



Exercise #1 - Two Note Slurs



Exercise #1 consists of two staves of music in 4/4 time. The first staff contains measures 1 through 7, featuring a sequence of two-note slurs: G4-A4, F4-G4, E4-F4, D4-E4, C4-D4, B3-C4, and A3-B3. The second staff contains measures 8 through 14, continuing the sequence with slurs: G3-A3, F3-G3, E3-F3, D3-E3, C3-D3, B2-C3, and A2-B2. The key signature changes from one flat to two flats between the staves.

Exercise #2 - Three Notes/Register



Exercise #2 consists of a single staff of music in 4/4 time, measures 15 through 23. It features a sequence of three-note slurs: G4-A4-B4, F4-G4-A4, E4-F4-G4, D4-E4-F4, C4-D4-E4, B3-C4-D4, and A3-B3-C4. The key signature changes from two flats to one flat between measures 18 and 19. A note in measure 23 is marked with a 'b' and a '2', indicating a second octave below the written pitch.


**no octave key for the rest*

Exercise #3 - Octaves



Exercise #3 consists of two staves of music in 4/4 time. The first staff contains measures 24 through 31, featuring octave exercises with slurs: G4-A4-B4, F4-G4-A4, E4-F4-G4, D4-E4-F4, C4-D4-E4, B3-C4-D4, and A3-B3-C4. The second staff contains measures 32 through 38, continuing the sequence with slurs: G3-A3-B3, F3-G3-A3, E3-F3-G3, D3-E3-F3, C3-D3-E3, B2-C3-D3, and A2-B2-C3. The key signature changes from one flat to two flats between the staves.

Exercise #4



Exercise #4 consists of three staves of music in 4/4 time. The first staff contains measures 39 through 44, featuring eighth-note slurs: G4-A4-B4, F4-G4-A4, E4-F4-G4, D4-E4-F4, C4-D4-E4, B3-C4-D4, and A3-B3-C4. The second staff contains measures 45 through 50, continuing the sequence with slurs: G3-A3-B3, F3-G3-A3, E3-F3-G3, D3-E3-F3, C3-D3-E3, B2-C3-D3, and A2-B2-C3. The third staff contains measures 51 through 58, continuing the sequence with slurs: G2-A2-B2, F2-G2-A2, E2-F2-G2, D2-E2-F2, C2-D2-E2, B1-C2-D2, and A1-B1-C2. The key signature changes from two flats to one flat between the second and third staves.

Scale Warm ups

3

Tenor saxophone - Bb major

Legato tongue



Legato vs. Staccato



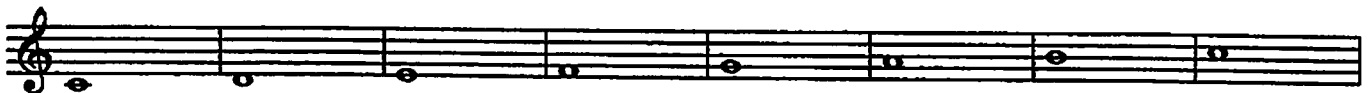
Legato tongue 2



Stagger breathe



Scale long tones



Legato vs. Staccato 2



Chorale in Thirds



Exercise in Thirds



Solo in Thirds

Musical notation for 'Solo in Thirds' on a single staff. It features a sequence of eighth notes in a scale, with a slur over the first two measures and another slur over the last two measures.

Up 5 Down 5

Musical notation for 'Up 5 Down 5' on a single staff. It shows an ascending scale followed by a descending scale, with a slur over the entire phrase.

Staccato syncopation

Musical notation for 'Staccato syncopation' on two staves. The first staff contains eighth notes with staccato marks and syncopated rhythms. The second staff contains chords with staccato marks.

Scale and Arpeggio

Musical notation for 'Scale and Arpeggio' on a single staff. It features a scale with a slur, followed by an arpeggiated section.

Scale Groove

Musical notation for 'Scale Groove' on two staves. The first staff shows a scale with a groove pattern, and the second staff shows a corresponding arpeggiated groove pattern.

Scale - Short and Fast

Musical notation for 'Scale - Short and Fast' on a single staff. It features a scale with a slur, ending with a final note.

Tuning chorale Slower

Musical notation for 'Tuning chorale Slower' on a single staff. It features a slow-moving scale with a slur and a final sustained note.

Scale Warm ups

5

Tenor saxophone - Eb major

Legato tongue



Legato vs. Staccato



Legato tongue 2



Stagger breathe



Scale long tones



37



Legato vs. Staccato 2



Chorale in Thirds



Exercise in Thirds



Solo in Thirds

Musical notation for 'Solo in Thirds' on a tenor saxophone. It consists of a single staff with a treble clef and a key signature of one flat (B-flat). The melody is written in eighth notes, starting on G4 and moving up and down the scale in a series of eighth-note pairs (thirds). The piece concludes with a whole rest.

Up 5 Down 5

Musical notation for 'Up 5 Down 5' on a tenor saxophone. It consists of a single staff with a treble clef and a key signature of one flat. The melody is written in eighth notes, ascending and then descending the scale in a series of eighth-note pairs. The piece concludes with a whole rest.

Staccato syncopation

Musical notation for 'Staccato syncopation' on a tenor saxophone. It consists of two staves with a treble clef and a key signature of one flat. The melody is written in eighth notes with staccato markings and syncopated rhythms. The piece concludes with a whole rest.

Scale and Arpeggio

Musical notation for 'Scale and Arpeggio' on a tenor saxophone. It consists of a single staff with a treble clef and a key signature of one flat. The melody is written in eighth notes, ascending and then descending the scale in a series of eighth-note pairs. The piece concludes with a whole rest.

Scale Groove

Musical notation for 'Scale Groove' on a tenor saxophone. It consists of two staves with a treble clef and a key signature of one flat. The melody is written in eighth notes with a rhythmic groove. The piece concludes with a whole rest.

Scale - Short and Fast

Musical notation for 'Scale - Short and Fast' on a tenor saxophone. It consists of a single staff with a treble clef and a key signature of one flat. The melody is written in eighth notes, ascending and then descending the scale in a series of eighth-note pairs. The piece concludes with a whole rest.

Tuning chorale Slower

Musical notation for 'Tuning chorale Slower' on a tenor saxophone. It consists of a single staff with a treble clef and a key signature of one flat. The melody is written in half notes, ascending and then descending the scale. The piece concludes with a whole rest.

Scale Warm ups

7

Tenor saxophone - Ab major

Legato tongue



Legato vs. Staccato



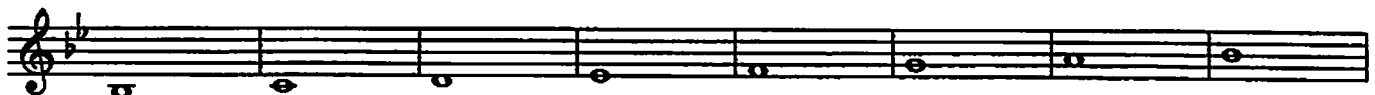
Legato tongue 2



Stagger breathe



Scale long tones



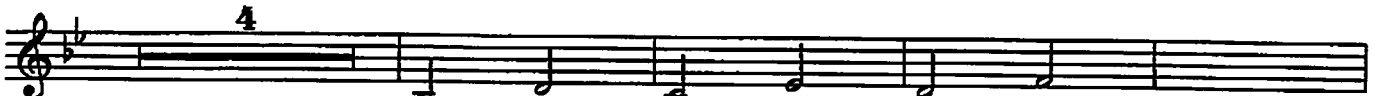
37



Legato vs. Staccato 2



Chorale in Thirds



Exercise in Thirds



Solo in Thirds

Musical notation for 'Solo in Thirds' in G major, 4/4 time. The melody consists of eighth notes in the right hand and quarter notes in the left hand, forming a series of thirds. A slur covers the entire phrase.

Up 5 Down 5

Musical notation for 'Up 5 Down 5' in G major, 4/4 time. The melody consists of eighth notes ascending and then descending, with a slur covering the entire phrase.

Staccato syncopation

Musical notation for 'Staccato syncopation' in G major, 4/4 time. The melody consists of eighth notes with staccato markings and syncopated rhythms, with a slur covering the entire phrase.

Scale and Arpeggio

Musical notation for 'Scale and Arpeggio' in G major, 4/4 time. The melody consists of eighth notes ascending and then descending, with a slur covering the entire phrase.

Scale Groove

Musical notation for 'Scale Groove' in G major, 4/4 time. The melody consists of eighth notes with a groove, with a slur covering the entire phrase.

Scale - Short and Fast

Musical notation for 'Scale - Short and Fast' in G major, 4/4 time. The melody consists of eighth notes with a fast tempo, with a slur covering the entire phrase.

Tuning chorale Slower

Musical notation for 'Tuning chorale Slower' in G major, 4/4 time. The melody consists of quarter notes with a slower tempo, with a slur covering the entire phrase.

Scale Warm ups

Tenor saxophone - F major

Legato tongue



Legato vs. Staccato



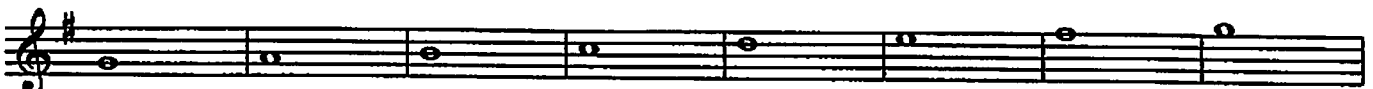
Legato tongue 2



Stagger breathe



Scale long tones



Legato vs. Staccato 2



Chorale in Thirds



Exercise in Thirds



Solo in Thirds

Musical notation for 'Solo in Thirds' on a treble clef staff with a key signature of one sharp (F#). The melody consists of eighth notes and quarter notes, with a slur over the first two measures and another slur over the last two measures.

Up 5 Down 5

Musical notation for 'Up 5 Down 5' on a treble clef staff with a key signature of one sharp (F#). The melody shows an ascending scale followed by a descending scale, with slurs and accents over the notes.

Staccato syncopation

Musical notation for 'Staccato syncopation' on a treble clef staff with a key signature of one sharp (F#). The melody features staccato eighth notes and quarter notes with syncopated rhythms.

Scale and Arpeggio

Musical notation for 'Scale and Arpeggio' on a treble clef staff with a key signature of one sharp (F#). The melody includes a scale run followed by arpeggiated chords.

Scale Groove

Musical notation for 'Scale Groove' on a treble clef staff with a key signature of one sharp (F#). The melody features a rhythmic groove with eighth notes and quarter notes.

Scale - Short and Fast

Musical notation for 'Scale - Short and Fast' on a treble clef staff with a key signature of one sharp (F#). The melody consists of short, fast scale runs.

Tuning chorale Slower

Musical notation for 'Tuning chorale Slower' on a treble clef staff with a key signature of one sharp (F#). The melody is a slow, simple scale run.



Tenor Saxophone

Band Basics in Bb

Developing Ensemble Sound and Technique

John McAllister

Bb Scale

Musical notation for the Bb scale, measures 1-8. The scale is written in treble clef, 4/4 time, starting on Bb. The notes are: Bb, C, D, Eb, F, G, Ab, Bb.

Listen to the Sections

Musical notation for Listen to the Sections, measures 9-17. The notation is in treble clef, 4/4 time. Measures 9-10 are labeled 'Woodwind Choir'. Measures 11-13 are labeled 'Brass Choir' and contain a whole rest. Measures 14-15 are labeled 'Percussion Section' and contain a whole rest. Measures 16-17 are labeled 'Full Band'.

Solidify the Key

Musical notation for Solidify the Key, measures 18-25. The notation is in treble clef, 4/4 time. Measures 18-21 show a descending scale: Bb, Ab, G, F, Eb. Measures 22-25 show an ascending scale: F, G, Ab, Bb.

Technique #1

Musical notation for Technique #1, measures 26-29. The notation is in treble clef, 4/4 time. Measures 26-29 show a sixteenth-note ascending scale: Bb, C, D, Eb, F, G, Ab, Bb.

Musical notation for Technique #1, measures 30-33. The notation is in treble clef, 4/4 time. Measures 30-33 show a sixteenth-note descending scale: Bb, Ab, G, F, Eb, D, C, Bb.

Technique #2

Musical notation for Technique #2, measures 34-37. The notation is in treble clef, 4/4 time. Measures 34-37 show a sixteenth-note ascending scale: Bb, C, D, Eb, F, G, Ab, Bb.

Musical notation for Technique #2, measures 38-41. The notation is in treble clef, 4/4 time. Measures 38-41 show a sixteenth-note descending scale: Bb, Ab, G, F, Eb, D, C, Bb.

Chorale

Musical notation for Chorale, measures 42-47. The notation is in treble clef, 4/4 time. Measures 42-47 show a simple melody: Bb, C, D, Eb, F, G, Ab, Bb.

Tenor Saxophone

Band Basics in Eb

Developing Ensemble Sound and Technique

John McAllister

Eb Scale

Musical notation for the Eb Scale, measures 1-8. The scale is written in a treble clef with a key signature of two flats (Bb and Eb) and a 4/4 time signature. The notes are: 1. Eb, 2. F, 3. G, 4. Ab, 5. Bb, 6. C, 7. D, 8. Eb.

Listen to the Sections

Musical notation for 'Listen to the Sections', measures 9-17. The notation is divided into four sections: 9-11 (Woodwind Choir), 12-13 (Brass Choir), 14-15 (Percussion Section), and 16-17 (Full Band). Measures 12 and 14 contain rests for the respective sections.

Solidify the Key

Musical notation for 'Solidify the Key', measures 18-25. The key signature changes to one flat (Bb) and the time signature to 3/4. The notes are: 18. Bb, 19. C, 20. D, 21. Eb, 22. F, 23. G, 24. Ab, 25. Bb.

Technique #1

Musical notation for 'Technique #1', measures 26-29. This section features eighth-note patterns in a Bb key signature and 3/4 time.

Musical notation for 'Technique #1' continuation, measures 30-33. This section continues the eighth-note patterns from the previous section.

Technique #2

Musical notation for 'Technique #2', measures 34-38. This section features sixteenth-note patterns in a Bb key signature and 3/4 time.

Chorale

Musical notation for 'Chorale', measures 39-42. This section features a slower, more melodic line in a Bb key signature and 3/4 time.

Musical notation for 'Chorale' continuation, measures 43-47. This section continues the melodic line from the previous section.

Tenor Saxophone

Band Basics in Ab
Developing Ensemble Sound and Technique

John McAllister

Bb Scale

Musical notation for the Bb scale, measures 1 through 8. The key signature has two flats (Bb and Eb), and the time signature is 4/4. The scale is written in a single line on a treble clef staff.

Listen to the Sections

Musical notation for 'Listen to the Sections', measures 9 through 17. The notation is on a single line with a treble clef. Measures 11 and 13 are marked with a '2' above them. Below the staff, the sections are labeled: 'Woodwind Choir' (measures 9-10), 'Brass Choir' (measures 11-12), 'Percussion Section' (measures 13-14), and 'Full Band' (measures 15-17).

Solidify the Key

Musical notation for 'Solidify the Key', measures 18 through 25. The notation is on a single line with a treble clef. Measure 21 features a fermata over a whole note.

Technique #1

Musical notation for 'Technique #1', measures 26 through 29. The notation is on a single line with a treble clef, showing a continuous eighth-note pattern.

Musical notation for 'Technique #1', measures 30 through 33. The notation is on a single line with a treble clef, continuing the eighth-note pattern.

Technique #2

Musical notation for 'Technique #2', measures 34 through 37. The notation is on a single line with a treble clef, showing a continuous eighth-note pattern.

Chorale

Musical notation for 'Chorale', measures 38 through 41. The notation is on a single line with a treble clef, featuring a melodic line with some rests.

Musical notation for 'Chorale', measures 42 through 47. The notation is on a single line with a treble clef, continuing the melodic line.

Band Basics in F

Tenor Saxophone

Developing Ensemble Sound and Technique

John McAllister

E♭ Scale

Listen to the Sections

Solidify the Key

Technique #1

Technique #2

Chorale

♭

CL/BCL/TPP/TSK

Bar.T.C

Chorale No. 1

Johann Crüger (1598-1663)

Soprano

Moderately Slow ♩=60

Musical staff for Soprano, measures 1-6. The staff is in treble clef with a key signature of one flat (Bb) and a common time signature (C). The tempo is 'Moderately Slow' with a metronome marking of ♩=60. The melody consists of quarter and eighth notes.

Musical staff for Soprano, measures 7-12. The staff continues the melody from the previous system, ending with a double bar line and repeat dots.

Alto

Moderately Slow ♩=60

Musical staff for Alto, measures 1-6. The staff is in treble clef with a key signature of one flat (Bb) and a common time signature (C). The tempo is 'Moderately Slow' with a metronome marking of ♩=60. The melody consists of quarter and eighth notes.

Musical staff for Alto, measures 7-12. The staff continues the melody from the previous system, ending with a double bar line and repeat dots.

Tenor

Moderately Slow ♩=60

Musical staff for Tenor, measures 1-6. The staff is in treble clef with a key signature of one flat (Bb) and a common time signature (C). The tempo is 'Moderately Slow' with a metronome marking of ♩=60. The melody consists of quarter and eighth notes.

Musical staff for Tenor, measures 7-12. The staff continues the melody from the previous system, ending with a double bar line and repeat dots.

Bass

Moderately Slow ♩=60

Musical staff for Bass, measures 1-6. The staff is in treble clef with a key signature of one flat (Bb) and a common time signature (C). The tempo is 'Moderately Slow' with a metronome marking of ♩=60. The melody consists of quarter and eighth notes.

Musical staff for Bass, measures 7-12. The staff continues the melody from the previous system, ending with a double bar line and repeat dots.

B♭ U/BCL
TR/TSR/BA.T.C.
Moderately Slow ♩=70

Choral 2

Soprano

Musical staff for Soprano voice, measures 1-6. The staff is in treble clef with a key signature of one flat (B♭). The tempo is 'Moderately Slow' with a metronome marking of ♩=70. The music consists of a series of eighth and quarter notes.

Musical staff for Soprano voice, measures 7-12. The staff is in treble clef with a key signature of one flat (B♭). The tempo is 'Moderately Slow' with a metronome marking of ♩=70. The music consists of a series of eighth and quarter notes.

Alto

Moderately Slow ♩=70

Musical staff for Alto voice, measures 1-6. The staff is in treble clef with a key signature of one flat (B♭). The tempo is 'Moderately Slow' with a metronome marking of ♩=70. The music consists of a series of eighth and quarter notes.

Musical staff for Alto voice, measures 7-12. The staff is in treble clef with a key signature of one flat (B♭). The tempo is 'Moderately Slow' with a metronome marking of ♩=70. The music consists of a series of eighth and quarter notes.

Tenor

Moderately Slow ♩=70

Musical staff for Tenor voice, measures 1-6. The staff is in treble clef with a key signature of one flat (B♭). The tempo is 'Moderately Slow' with a metronome marking of ♩=70. The music consists of a series of eighth and quarter notes.

Musical staff for Tenor voice, measures 7-12. The staff is in treble clef with a key signature of one flat (B♭). The tempo is 'Moderately Slow' with a metronome marking of ♩=70. The music consists of a series of eighth and quarter notes.

Bass

Moderately Slow ♩=70

Musical staff for Bass voice, measures 1-6. The staff is in treble clef with a key signature of one flat (B♭). The tempo is 'Moderately Slow' with a metronome marking of ♩=70. The music consists of a series of eighth and quarter notes.

Musical staff for Bass voice, measures 7-12. The staff is in treble clef with a key signature of one flat (B♭). The tempo is 'Moderately Slow' with a metronome marking of ♩=70. The music consists of a series of eighth and quarter notes.

(Bb)

CL/BCL
TPT/TSX
Bar. T. C.

Chorale No. 4

J.S. Bach (1685-1750)

Soprano

Moderately ♩=80

Musical staff for Soprano voice, measures 1-7. The staff is in treble clef with a key signature of one flat (Bb) and a 3/4 time signature. The tempo is marked 'Moderately' with a metronome marking of ♩=80. The melody consists of quarter and eighth notes.

8

Musical staff for Soprano voice, measures 8-14. The staff continues the melody from the previous section, ending with a double bar line and repeat dots.

Alto

Moderately ♩=80

Musical staff for Alto voice, measures 1-7. The staff is in treble clef with a key signature of one flat (Bb) and a 3/4 time signature. The tempo is marked 'Moderately' with a metronome marking of ♩=80. The melody consists of quarter and eighth notes.

8

Musical staff for Alto voice, measures 8-14. The staff continues the melody from the previous section, ending with a double bar line and repeat dots.

Tenor

Moderately ♩=80

Musical staff for Tenor voice, measures 1-7. The staff is in treble clef with a key signature of one flat (Bb) and a 3/4 time signature. The tempo is marked 'Moderately' with a metronome marking of ♩=80. The melody consists of quarter and eighth notes.

8

Musical staff for Tenor voice, measures 8-14. The staff continues the melody from the previous section, ending with a double bar line and repeat dots.

Bass

Moderately ♩=80

Musical staff for Bass voice, measures 1-7. The staff is in treble clef with a key signature of one flat (Bb) and a 3/4 time signature. The tempo is marked 'Moderately' with a metronome marking of ♩=80. The melody consists of quarter and eighth notes.

8

Musical staff for Bass voice, measures 8-14. The staff continues the melody from the previous section, ending with a double bar line and repeat dots.