

B♭ Clarinet Fingering Chart

E	F	F♯	G♭	G	G♯	A♭	A	A♯	B♭													
B	C	C♯	D♭	D	D♯	E♭	E	F	F♯	G♭												
G	G♯	A♭	A	A♯	B♭	B	C	C♯	D♭	D	D♯	E♭	E	F	F♯	G♭	G	G♯	A♭	A		
A♯	B♭	B	C	C♯	D♭	D	D♯	E♭	E	F	F♯	G♭	G	G♯	A♭	A						
F♯	G♭	G	G♯	A♭	A	A♯	B♭	B	C	C♯	D♭	D	D♯	E♭	E	F	F♯	G♭	G	G♯	A♭	A

Clarinet Trill Fingering Chart

E = F		E = F#		F = Gb		F = G		F# = G		Gb = Ab		G = Ab	
G = A		Gb = A		Ab = Bb		A = Bb		A = B		Ab = B		Bb = C	
B = C#		C = Db		C = D		C# = D		D = Eb		D = E		D# = E	
E = F		E = F		E = F#		F = Gb		F = G		F# = G		Gb = Ab	
G = A		Gb = A		Ab = Bb		A = Bb		A = B		Ab = B		Bb = C	

B = C# C = D# C = D C# = D D# = Eb D = Eb D = E

D# = E Eb = F E = F E = F# F = G# F = G F# = G G# = Ab G = Ab

G = A G# = A Ab = Bb A = Bb A = B A# = B Bb = C

B = C B = C# C = D# C = D C# = D D# = Eb D = Eb D = E

D# = E Eb = F E = F E = F# F = G# F = G F# = G G# = Ab G = Ab

Long Tones Warm-up

Exercise #1 - Remington from F



Exercise #2 - Remington from B \flat



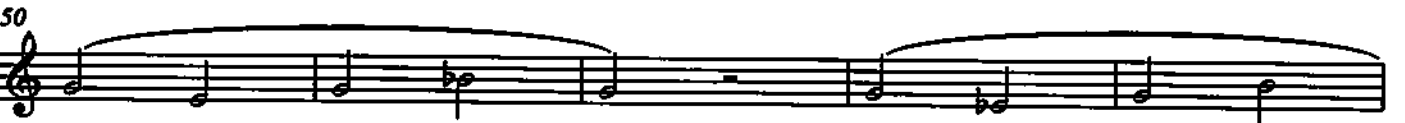
Exercise #3 - Remington from Low B \flat



Exercise #4 - Intervals



Exercise #5 - Half Step Expansion



Exercise #1 - Two Note Slurs



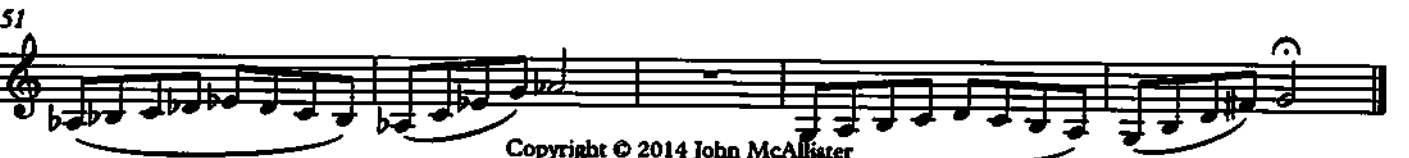
15 Exercise #2 - Three Notes/Register



23 Exercise #3 - Octaves



39 Exercise #4



Scale Warm ups

Clarinets - Bb major

3

Legato tongue



Legato vs. Staccato



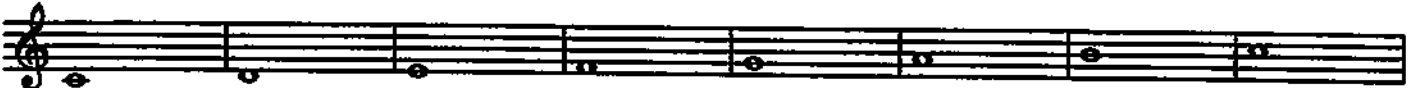
Legato tongue 2



Stagger breathe



Scale long tones



Legato vs. Staccato 2



Chorale in Thirds



Exercise in Thirds



4

Solo in Thirds

Musical notation for 'Solo in Thirds' on a single staff. It features a sequence of eighth notes in pairs, with each pair beamed together to represent a third. The notes are grouped into four measures, with a slur under the first two notes of each measure.

Up 5 Down 5

Musical notation for 'Up 5 Down 5' on a single staff. It shows an ascending scale of eighth notes followed by a descending scale of eighth notes. The notes are grouped into four measures, with a slur under the first two notes of each measure.

Staccato syncopation

Musical notation for 'Staccato syncopation' on two staves. The top staff contains a sequence of eighth notes with staccato marks and syncopated rhythms. The bottom staff contains a sequence of eighth notes with staccato marks and syncopated rhythms.

Scale and Arpeggio

Musical notation for 'Scale and Arpeggio' on a single staff. It features a sequence of eighth notes, with some notes beamed together to form arpeggios. The notes are grouped into four measures, with a slur under the first two notes of each measure.

Scale Groove

Musical notation for 'Scale Groove' on two staves. The top staff contains a sequence of eighth notes with a groove. The bottom staff contains a sequence of eighth notes with a groove.

Scale - Short and Fast

Musical notation for 'Scale - Short and Fast' on a single staff. It features a sequence of eighth notes, with some notes beamed together. The notes are grouped into four measures, with a slur under the first two notes of each measure.

Tuning chorale Slower

Musical notation for 'Tuning chorale Slower' on a single staff. It features a sequence of eighth notes, with some notes beamed together. The notes are grouped into four measures, with a slur under the first two notes of each measure.

Scale Warm ups

Clarinets - Eb major

5

Legato tongue



Legato vs. Staccato



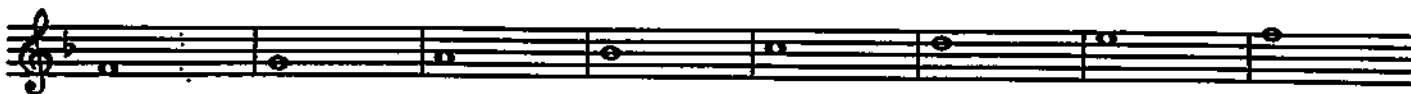
Legato tongue 2



Stagger breathe



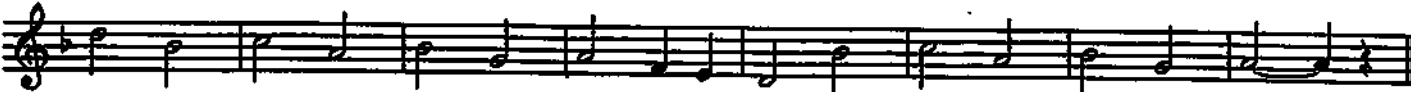
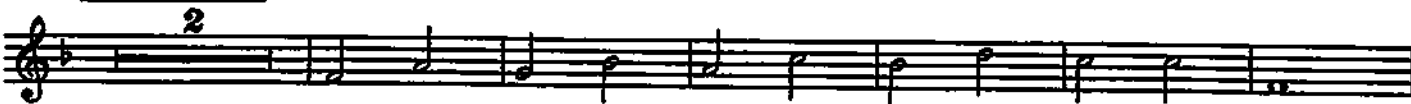
Scale long tones



Legato vs. Staccato 2



Chorale in Thirds



Exercise in Thirds



6

Solo in Thirds

Musical notation for 'Solo in Thirds' in B-flat major, featuring a melodic line with a third interval and a corresponding bass line.

Up 5 Down 5

Musical notation for 'Up 5 Down 5' in B-flat major, showing a scale ascending and descending by a fifth interval.

Staccato syncopation

Musical notation for 'Staccato syncopation' in B-flat major, consisting of two staves of staccato eighth notes with syncopated rhythms.

Scale and Arpeggio

Musical notation for 'Scale and Arpeggio' in B-flat major, combining a scale with arpeggiated chords.

Scale-Groove

Musical notation for 'Scale-Groove' in B-flat major, featuring a rhythmic groove with eighth notes and chords.

Scale - Short and Fast

Musical notation for 'Scale - Short and Fast' in B-flat major, a short and fast scale exercise.

Tuning chorale Slower

Musical notation for 'Tuning chorale Slower' in B-flat major, a slow, melodic exercise for tuning.

Scale Warm ups

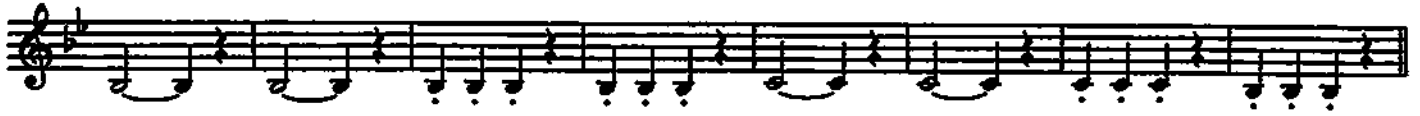
Clarinets - Ab major

7

Legato tongue



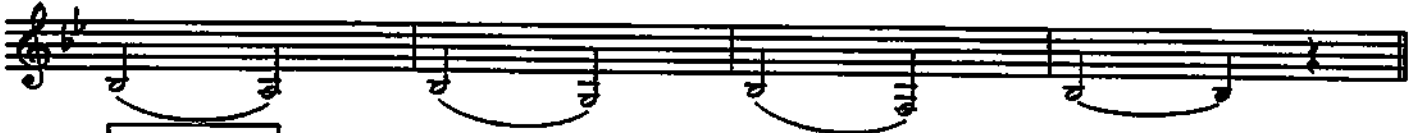
Legato vs. Staccato



Legato tongue 2



Stagger breathe



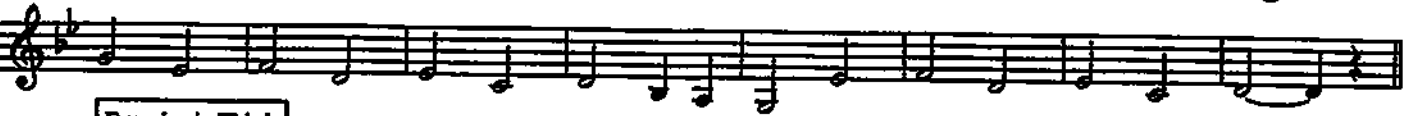
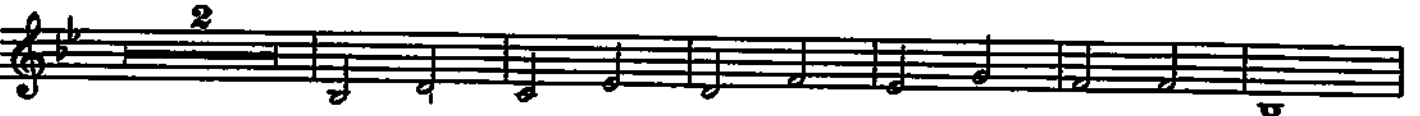
Scale long tones



Legato vs. Staccato 2



Chorale in Thirds



Exercise in Thirds



Solo in Thirds

Musical notation for 'Solo in Thirds' on a single staff in G major. It features a melodic line with a slur over the first half and a fermata over the second half.

Up 5 Down 5

Musical notation for 'Up 5 Down 5' on a single staff in G major. It shows an ascending scale followed by a descending scale, with a slur under the ascending part.

Staccato syncopation

Musical notation for 'Staccato syncopation' on two staves in G major. The top staff has a rhythmic pattern of eighth notes with staccato marks and syncopated accents. The bottom staff provides a harmonic accompaniment.

Scale and Arpeggio

Musical notation for 'Scale and Arpeggio' on a single staff in G major. It features a scale with a slur and an arpeggiated chord at the end.

Scale Groove

Musical notation for 'Scale Groove' on two staves in G major. The top staff has a rhythmic pattern of eighth notes with a steady groove. The bottom staff provides a harmonic accompaniment.

Scale - Short and Fast

Musical notation for 'Scale - Short and Fast' on a single staff in G major. It features a short, fast scale run.

Tuning chorale Slower

Musical notation for 'Tuning chorale Slower' on a single staff in G major. It features a slow, melodic line with a slur and a fermata at the end.

Scale Warm ups

Clarinets - F major

9

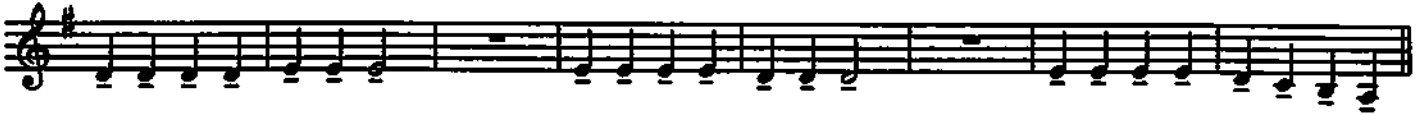
Legato tongue



Legato vs. Staccato



Legato tongue 2



Stagger breathe



Scale long tones



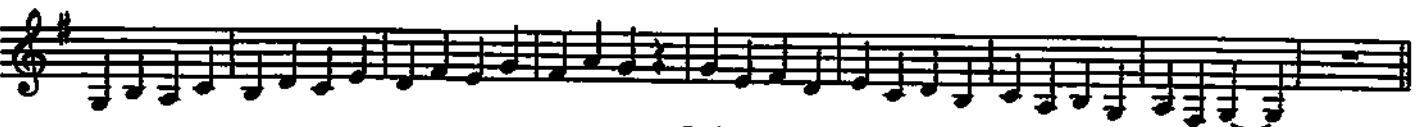
Legato vs. Staccato 2



Chorale in Thirds



Exercise in Thirds





Tuning chorale
Slower



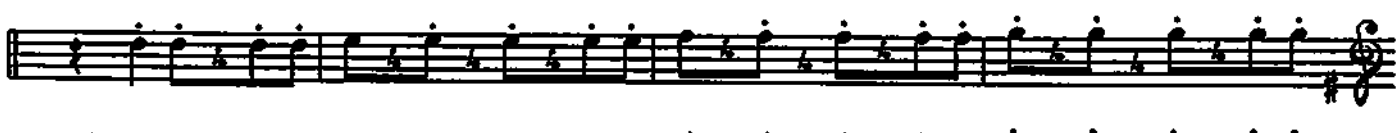
Scale - Short and Fast



Scale Groove



Scale and Arpeggio



Staccato syncopation



Up 5 Down 5



Solo in Thirds

10



Clarinet 1 + 2

Band Basics in Bb

Developing Ensemble Sound and Technique

John McAllister

Bb Scale

Musical notation for the Bb Scale, measures 1 through 8. The scale is written in treble clef with a key signature of two flats (Bb). The notes are: 1. Bb, 2. C, 3. D, 4. Eb, 5. F, 6. G, 7. Ab, 8. Bb.

Listen to the Sections

Musical notation for Listen to the Sections, measures 9 through 17. The notation is divided into four sections: 9-10: *Woodwind Choir*; 11-12: *Brass Choir* (marked with a '2'); 13-14: *Percussion Section* (marked with a '2'); 15-17: *Full Band*.

Solidify the Key

Musical notation for Solidify the Key, measures 18 through 25. The notation includes a measure with a fermata and the instruction *opt. 8va* below it.

Technique #1

Musical notation for Technique #1, measures 26 through 29. The notation consists of eighth-note patterns.

Musical notation for Technique #1, measures 30 through 33. The notation consists of eighth-note patterns.

Technique #2

Musical notation for Technique #2, measures 34 through 38. The notation consists of eighth-note patterns.

Chorale

Musical notation for Chorale, measures 39 through 42. The notation consists of quarter-note patterns.

Musical notation for Chorale, measures 43 through 47. The notation consists of quarter-note patterns.

Clarinet 1 + 2

Band Basics in Eb
Developing Ensemble Sound and Technique

John McAllister

Eb Scale

Musical notation for the Eb scale, measures 1 through 8. The key signature has two flats (Bb and Eb). The melody is written on a treble clef staff. Measure numbers 1 through 8 are indicated above the notes.

Listen to the Sections

Musical notation for 'Listen to the Sections', measures 9 through 17. The melody is written on a treble clef staff. Measure numbers 9 through 17 are indicated above the notes. Section labels are placed below the staff: 'Woodwind Choir' (measures 9-10), 'Brass Choir' (measures 11-12), 'Percussion Section' (measures 13-14), and 'Full Band' (measures 15-17). The numbers 2 and 2 are written above measures 11 and 13 respectively.

Solidify the Key

Musical notation for 'Solidify the Key', measures 18 through 25. The melody is written on a treble clef staff. Measure numbers 18 through 25 are indicated above the notes.

Technique #1

Musical notation for 'Technique #1', measures 26 through 29. The melody is written on a treble clef staff. Measure numbers 26 through 29 are indicated above the notes.

Musical notation for 'Technique #1', measures 30 through 33. The melody is written on a treble clef staff. Measure numbers 30 through 33 are indicated above the notes.

Technique #2

Musical notation for 'Technique #2', measures 34 through 37. The melody is written on a treble clef staff. Measure numbers 34 through 37 are indicated above the notes.

Chorale

Musical notation for 'Chorale', measures 38 through 41. The melody is written on a treble clef staff. Measure numbers 38 through 41 are indicated above the notes.

Musical notation for 'Chorale', measures 42 through 47. The melody is written on a treble clef staff. Measure numbers 42 through 47 are indicated above the notes.

Clarinet 1 + 2

Band Basics in Ab
Developing Ensemble Sound and Technique

John McAllister

Bb Scale

Musical notation for the Bb scale, measures 1 through 8. The scale is written in a single line of music on a treble clef staff with a key signature of two flats (Bb and Eb) and a 2/4 time signature. The notes are: 1. Bb, 2. C, 3. D, 4. Eb, 5. F, 6. G, 7. Ab, 8. Bb.

Listen to the Sections

Musical notation for 'Listen to the Sections', measures 9 through 17. The notation is on a treble clef staff with a key signature of two flats. Measures 9-10 are labeled 'Woodwind Choir'. Measures 11-12 are labeled 'Brass Choir' and contain a whole rest. Measures 13-14 are labeled 'Percussion Section' and contain a whole rest. Measures 15-17 are labeled 'Full Band' and contain a whole rest.

Solidify the Key

Musical notation for 'Solidify the Key', measures 18 through 25. The notation is on a treble clef staff with a key signature of two flats. Measures 18-21 show a sequence of notes: Bb, C, D, Eb, F, G, Ab, Bb. Measure 21 has a fermata. Measures 22-25 show a sequence of notes: Bb, C, D, Eb, F, G, Ab, Bb. Below measure 22 is the text 'opt. 8va'.

Technique #1

Musical notation for 'Technique #1', measures 26 through 29. The notation is on a treble clef staff with a key signature of two flats. It features a continuous eighth-note pattern: Bb, C, D, Eb, F, G, Ab, Bb.

Musical notation for 'Technique #1', measures 30 through 33. The notation is on a treble clef staff with a key signature of two flats. It continues the eighth-note pattern from the previous section.

Technique #2

Musical notation for 'Technique #2', measures 34 through 37. The notation is on a treble clef staff with a key signature of two flats. It features a continuous eighth-note pattern: Bb, C, D, Eb, F, G, Ab, Bb. Below measure 34 is the text 'opt. 8va'.

Chorale

Musical notation for 'Chorale', measures 38 through 41. The notation is on a treble clef staff with a key signature of two flats. It features a sequence of notes: Bb, C, D, Eb, F, G, Ab, Bb.

Musical notation for 'Chorale', measures 42 through 47. The notation is on a treble clef staff with a key signature of two flats. It features a sequence of notes: Bb, C, D, Eb, F, G, Ab, Bb.

Clarinet 1 + 2

Band Basics in F

Developing Ensemble Sound and Technique

John McAllister

E♭ Scale

Musical notation for the E♭ scale, measures 2 through 8. The key signature has one flat (B♭). The scale is written in a single line of music with a treble clef and a 2/4 time signature. The notes are: 2 (F), 3 (G), 4 (A), 5 (B♭), 6 (C), 7 (D), 8 (E♭).

Listen to the Sections

Musical notation for 'Listen to the Sections', measures 9 through 17. The key signature has one flat (B♭). The notation shows rests for different sections: measures 11-13 are marked with a '2' and a thick line, labeled 'Brass Choir'; measures 13-15 are marked with a '2' and a thick line, labeled 'Percussion Section'. Other measures (9, 10, 14, 16, 17) are labeled 'Woodwind Choir' and 'Full Band'.

Solidify the Key

Musical notation for 'Solidify the Key', measures 18 through 25. The key signature has one flat (B♭). The notation consists of a single line of music with a treble clef and a 2/4 time signature, featuring a sequence of notes that reinforce the key signature.

Technique #1

Musical notation for 'Technique #1', measures 26 through 29. The key signature has one flat (B♭). The notation features a rhythmic exercise with eighth notes and quarter notes in a single line of music with a treble clef and a 2/4 time signature.

Musical notation for 'Technique #1', measures 30 through 33. The key signature has one flat (B♭). The notation continues the rhythmic exercise with eighth notes and quarter notes in a single line of music with a treble clef and a 2/4 time signature.

Technique #2

Musical notation for 'Technique #2', measures 34 through 37. The key signature has one flat (B♭). The notation features a rhythmic exercise with eighth notes and quarter notes in a single line of music with a treble clef and a 2/4 time signature.

Chorale

Musical notation for 'Chorale', measures 38 through 41. The key signature has one flat (B♭). The notation features a slower, more melodic exercise with quarter and half notes in a single line of music with a treble clef and a 2/4 time signature.

Musical notation for 'Chorale', measures 42 through 47. The key signature has one flat (B♭). The notation continues the slower, melodic exercise with quarter and half notes in a single line of music with a treble clef and a 2/4 time signature.

CL/BCL/TPT/TSK

Chorale No. 1

Johann Crüger (1598-1663)

Bb

Bx.T.C

Soprano

Moderately Slow ♩=60

Musical staff for Soprano, measures 1-6. The staff is in treble clef with a key signature of two flats (Bb). The tempo is 'Moderately Slow' with a metronome marking of ♩=60. The melody consists of quarter and eighth notes.

Musical staff for Soprano, measures 7-12. The staff continues the melody from the previous system, ending with a fermata on the final note.

Alto

Moderately Slow ♩=60

Musical staff for Alto, measures 1-6. The staff is in treble clef with a key signature of two flats (Bb). The tempo is 'Moderately Slow' with a metronome marking of ♩=60. The melody consists of quarter and eighth notes.

Musical staff for Alto, measures 7-12. The staff continues the melody from the previous system, ending with a fermata on the final note.

Tenor

Moderately Slow ♩=60

Musical staff for Tenor, measures 1-6. The staff is in treble clef with a key signature of two flats (Bb). The tempo is 'Moderately Slow' with a metronome marking of ♩=60. The melody consists of quarter and eighth notes.

Musical staff for Tenor, measures 7-12. The staff continues the melody from the previous system, ending with a fermata on the final note.

Bass

Moderately Slow ♩=60

Musical staff for Bass, measures 1-6. The staff is in treble clef with a key signature of two flats (Bb). The tempo is 'Moderately Slow' with a metronome marking of ♩=60. The melody consists of quarter and eighth notes.

Musical staff for Bass, measures 7-12. The staff continues the melody from the previous system, ending with a fermata on the final note.

B♭ 4/4 BCL
TR/TRX/BA.T.C.

Exhale 2

Soprano

Moderately Slow ♩=70

Musical staff for Soprano part, measures 1-6. The staff is in treble clef with a key signature of one flat (B♭). The tempo is 'Moderately Slow' with a metronome marking of ♩=70. The music consists of a series of eighth and quarter notes.

Musical staff for Soprano part, measures 7-12. The staff continues the melody from the previous section, ending with a double bar line.

Alto

Moderately Slow ♩=70

Musical staff for Alto part, measures 1-6. The staff is in treble clef with a key signature of one flat (B♭). The tempo is 'Moderately Slow' with a metronome marking of ♩=70. The music consists of a series of eighth and quarter notes.

Musical staff for Alto part, measures 7-12. The staff continues the melody from the previous section, ending with a double bar line.

Tenor

Moderately Slow ♩=70

Musical staff for Tenor part, measures 1-6. The staff is in treble clef with a key signature of one flat (B♭). The tempo is 'Moderately Slow' with a metronome marking of ♩=70. The music consists of a series of eighth and quarter notes.

Musical staff for Tenor part, measures 7-12. The staff continues the melody from the previous section, ending with a double bar line.

Bass

Moderately Slow ♩=70

Musical staff for Bass part, measures 1-6. The staff is in treble clef with a key signature of one flat (B♭). The tempo is 'Moderately Slow' with a metronome marking of ♩=70. The music consists of a series of eighth and quarter notes.

Musical staff for Bass part, measures 7-12. The staff continues the melody from the previous section, ending with a double bar line.

(B)

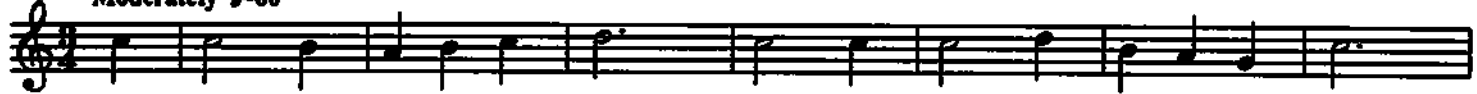
CL/BCL
TPT/TSX
Bar. T.C.

Chorale No. 4

J.S. Bach (1685-1750)

Soprano

Moderately ♩=80



8



Alto

Moderately ♩=80



8



Tenor

Moderately ♩=80



8



Bass

Moderately ♩=80



8

