

Long Tones Warm-up



McAllister

Exercise #1 - Remington from F

8

Exercise #2 - Remington from B \flat

15

Exercise #3 - Remington from Low B \flat

24

Exercise #4 - Intervals

33

Exercise #5 - Half Step Expansion

42

50

55

Exercise #1 - Two Note Slurs

Musical notation for Exercise #1 - Two Note Slurs. The exercise is written on a single staff in 4/4 time. It consists of two lines of music. The first line contains measures 1 through 7, and the second line contains measures 8 through 14. The exercise focuses on slurs over pairs of notes, with various accidentals and rhythmic values.

15 Exercise #2 - Three Notes/Register

Musical notation for Exercise #2 - Three Notes/Register. The exercise is written on a single staff in 4/4 time, starting at measure 15. It consists of measures 15 through 22. The exercise focuses on slurs over groups of three notes, with various accidentals and rhythmic values. Trill markings 'T' are placed below the first note of each group.

Exercise #3 - Octaves

Musical notation for Exercise #3 - Octaves. The exercise is written on a single staff in 4/4 time, starting at measure 23. It consists of measures 23 through 30. The exercise focuses on slurs over octaves, with various accidentals and rhythmic values.

Exercise #4

Musical notation for Exercise #4. The exercise is written on a single staff in 4/4 time, starting at measure 39. It consists of measures 39 through 50. The exercise focuses on slurs over groups of notes, with various accidentals and rhythmic values.

Scale Warm ups

3

Bass clarinet - Bb major

Legato tongue



Legato vs. Staccato



Legato tongue 2



Stagger breathe



Scale long tones



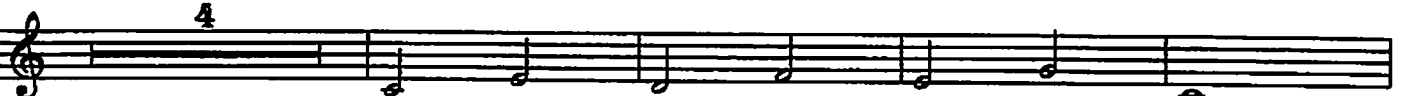
37



Legato vs. Staccato 2



Chorale in Thirds



Exercise in Thirds



Solo in Thirds

Musical notation for 'Solo in Thirds' on a single staff. It features a melodic line with eighth notes and a bass line with chords, both spanning two measures. A slur covers the entire piece.

Up 5 Down 5

Musical notation for 'Up 5 Down 5' on a single staff. It shows an ascending scale followed by a descending scale, with eighth notes in the upper voice and chords in the lower voice.

Staccato syncopation

Musical notation for 'Staccato syncopation' on two staves. The first staff has a melodic line with eighth notes and rests, while the second staff has a bass line with chords and eighth notes.

Scale and Arpeggio

Musical notation for 'Scale and Arpeggio' on a single staff. It features a scale in the upper voice and an arpeggiated bass line.

Scale Groove

Musical notation for 'Scale Groove' on two staves. The first staff has a melodic line with eighth notes and rests, and the second staff has a bass line with chords and eighth notes.

Scale - Short and Fast

Musical notation for 'Scale - Short and Fast' on a single staff. It features a short, fast scale run in the upper voice and a bass line with chords.

Tuning chorale Slower

Musical notation for 'Tuning chorale Slower' on a single staff. It features a slow, melodic line with eighth notes and a bass line with chords.

Solo in Thirds

Musical notation for 'Solo in Thirds' on a single staff. It features a sequence of eighth notes in a descending scale, with pairs of notes separated by a third interval. The notes are beamed together in groups of four.

Up 5 Down 5

Musical notation for 'Up 5 Down 5' on a single staff. It shows an ascending scale followed by a descending scale, with a five-note interval between the peak and the trough. The notes are beamed together in groups of four.

Staccato syncopation

Musical notation for 'Staccato syncopation' on two staves. The top staff contains a series of eighth notes with staccato markings and syncopated rhythms. The bottom staff contains a corresponding bass line with eighth notes.

Scale and Arpeggio

Musical notation for 'Scale and Arpeggio' on a single staff. It features a scale followed by arpeggiated chords, with notes beamed together in groups of four.

Scale Groove

Musical notation for 'Scale Groove' on two staves. The top staff shows a scale with a rhythmic groove, and the bottom staff shows a bass line with eighth notes.

Scale - Short and Fast

Musical notation for 'Scale - Short and Fast' on a single staff. It features a short, fast scale with notes beamed together in groups of four.

Tuning chorale Slower

Musical notation for 'Tuning chorale Slower' on a single staff. It features a slow, melodic line with notes beamed together in groups of four.

Scale Warm ups

Bass clarinet - Ab major

7

Legato tongue



Legato vs. Staccato



Legato tongue 2



Stagger breathe



Scale long tones



37



Legato vs. Staccato 2



Chorale in Thirds



Exercise in Thirds



Solo in Thirds



Up 5 Down 5



Staccato syncopation



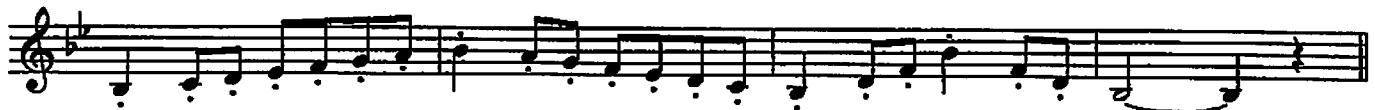
Scale and Arpeggio



Scale Groove



Scale - Short and Fast



Tuning chorale Slower



Scale Warm ups

Bass clarinet - F major

9

Legato tongue

A single musical staff in treble clef with a key signature of one sharp (F major). It contains a sequence of notes: F4, G4, A4, B4, C5, B4, A4, G4, F4. The notes are connected by a slur, indicating a legato articulation.

Legato vs. Staccato

A single musical staff in treble clef with a key signature of one sharp (F major). It contains a sequence of notes: F4, G4, A4, B4, C5, B4, A4, G4, F4. The notes are connected by a slur, indicating a legato articulation.

Legato tongue 2

A single musical staff in treble clef with a key signature of one sharp (F major). It contains a sequence of notes: F4, G4, A4, B4, C5, B4, A4, G4, F4. The notes are connected by a slur, indicating a legato articulation.

Stagger breathe

A single musical staff in treble clef with a key signature of one sharp (F major). It contains a sequence of notes: F4, G4, A4, B4, C5, B4, A4, G4, F4. The notes are connected by a slur, indicating a legato articulation.

Scale long tones

A single musical staff in treble clef with a key signature of one sharp (F major). It contains a sequence of notes: F4, G4, A4, B4, C5, B4, A4, G4, F4. The notes are connected by a slur, indicating a legato articulation.

Legato vs. Staccato 2

A single musical staff in treble clef with a key signature of one sharp (F major). It contains a sequence of notes: F4, G4, A4, B4, C5, B4, A4, G4, F4. The notes are connected by a slur, indicating a legato articulation.

Chorale in Thirds

A single musical staff in treble clef with a key signature of one sharp (F major). It contains a sequence of notes: F4, G4, A4, B4, C5, B4, A4, G4, F4. The notes are connected by a slur, indicating a legato articulation.

Exercise in Thirds

A single musical staff in treble clef with a key signature of one sharp (F major). It contains a sequence of notes: F4, G4, A4, B4, C5, B4, A4, G4, F4. The notes are connected by a slur, indicating a legato articulation.

Solo in Thirds

A single musical staff in treble clef with a key signature of one sharp (F#). It contains a sequence of eighth notes, grouped into pairs of intervals of a third. The notes are: G4, A4, B4, C5, D5, E5, F#5, G5, A5, B5, C6, D6, E6, F#6, G6, A6, B6, C7, D7, E7, F#7, G7, A7, B7, C8, D8, E8, F#8, G8, A8, B8, C9, D9, E9, F#9, G9, A9, B9, C10, D10, E10, F#10, G10, A10, B10, C11, D11, E11, F#11, G11, A11, B11, C12, D12, E12, F#12, G12, A12, B12, C13, D13, E13, F#13, G13, A13, B13, C14, D14, E14, F#14, G14, A14, B14, C15, D15, E15, F#15, G15, A15, B15, C16, D16, E16, F#16, G16, A16, B16, C17, D17, E17, F#17, G17, A17, B17, C18, D18, E18, F#18, G18, A18, B18, C19, D19, E19, F#19, G19, A19, B19, C20, D20, E20, F#20, G20, A20, B20, C21, D21, E21, F#21, G21, A21, B21, C22, D22, E22, F#22, G22, A22, B22, C23, D23, E23, F#23, G23, A23, B23, C24, D24, E24, F#24, G24, A24, B24, C25, D25, E25, F#25, G25, A25, B25, C26, D26, E26, F#26, G26, A26, B26, C27, D27, E27, F#27, G27, A27, B27, C28, D28, E28, F#28, G28, A28, B28, C29, D29, E29, F#29, G29, A29, B29, C30, D30, E30, F#30, G30, A30, B30, C31, D31, E31, F#31, G31, A31, B31, C32, D32, E32, F#32, G32, A32, B32, C33, D33, E33, F#33, G33, A33, B33, C34, D34, E34, F#34, G34, A34, B34, C35, D35, E35, F#35, G35, A35, B35, C36, D36, E36, F#36, G36, A36, B36, C37, D37, E37, F#37, G37, A37, B37, C38, D38, E38, F#38, G38, A38, B38, C39, D39, E39, F#39, G39, A39, B39, C40, D40, E40, F#40, G40, A40, B40, C41, D41, E41, F#41, G41, A41, B41, C42, D42, E42, F#42, G42, A42, B42, C43, D43, E43, F#43, G43, A43, B43, C44, D44, E44, F#44, G44, A44, B44, C45, D45, E45, F#45, G45, A45, B45, C46, D46, E46, F#46, G46, A46, B46, C47, D47, E47, F#47, G47, A47, B47, C48, D48, E48, F#48, G48, A48, B48, C49, D49, E49, F#49, G49, A49, B49, C50, D50, E50, F#50, G50, A50, B50, C51, D51, E51, F#51, G51, A51, B51, C52, D52, E52, F#52, G52, A52, B52, C53, D53, E53, F#53, G53, A53, B53, C54, D54, E54, F#54, G54, A54, B54, C55, D55, E55, F#55, G55, A55, B55, C56, D56, E56, F#56, G56, A56, B56, C57, D57, E57, F#57, G57, A57, B57, C58, D58, E58, F#58, G58, A58, B58, C59, D59, E59, F#59, G59, A59, B59, C60, D60, E60, F#60, G60, A60, B60, C61, D61, E61, F#61, G61, A61, B61, C62, D62, E62, F#62, G62, A62, B62, C63, D63, E63, F#63, G63, A63, B63, C64, D64, E64, F#64, G64, A64, B64, C65, D65, E65, F#65, G65, A65, B65, C66, D66, E66, F#66, G66, A66, B66, C67, D67, E67, F#67, G67, A67, B67, C68, D68, E68, F#68, G68, A68, B68, C69, D69, E69, F#69, G69, A69, B69, C70, D70, E70, F#70, G70, A70, B70, C71, D71, E71, F#71, G71, A71, B71, C72, D72, E72, F#72, G72, A72, B72, C73, D73, E73, F#73, G73, A73, B73, C74, D74, E74, F#74, G74, A74, B74, C75, D75, E75, F#75, G75, A75, B75, C76, D76, E76, F#76, G76, A76, B76, C77, D77, E77, F#77, G77, A77, B77, C78, D78, E78, F#78, G78, A78, B78, C79, D79, E79, F#79, G79, A79, B79, C80, D80, E80, F#80, G80, A80, B80, C81, D81, E81, F#81, G81, A81, B81, C82, D82, E82, F#82, G82, A82, B82, C83, D83, E83, F#83, G83, A83, B83, C84, D84, E84, F#84, G84, A84, B84, C85, D85, E85, F#85, G85, A85, B85, C86, D86, E86, F#86, G86, A86, B86, C87, D87, E87, F#87, G87, A87, B87, C88, D88, E88, F#88, G88, A88, B88, C89, D89, E89, F#89, G89, A89, B89, C90, D90, E90, F#90, G90, A90, B90, C91, D91, E91, F#91, G91, A91, B91, C92, D92, E92, F#92, G92, A92, B92, C93, D93, E93, F#93, G93, A93, B93, C94, D94, E94, F#94, G94, A94, B94, C95, D95, E95, F#95, G95, A95, B95, C96, D96, E96, F#96, G96, A96, B96, C97, D97, E97, F#97, G97, A97, B97, C98, D98, E98, F#98, G98, A98, B98, C99, D99, E99, F#99, G99, A99, B99, C100, D100, E100, F#100, G100, A100, B100, C101, D101, E101, F#101, G101, A101, B101, C102, D102, E102, F#102, G102, A102, B102, C103, D103, E103, F#103, G103, A103, B103, C104, D104, E104, F#104, G104, A104, B104, C105, D105, E105, F#105, G105, A105, B105, C106, D106, E106, F#106, G106, A106, B106, C107, D107, E107, F#107, G107, A107, B107, C108, D108, E108, F#108, G108, A108, B108, C109, D109, E109, F#109, G109, A109, B109, C110, D110, E110, F#110, G110, A110, B110, C111, D111, E111, F#111, G111, A111, B111, C112, D112, E112, F#112, G112, A112, B112, C113, D113, E113, F#113, G113, A113, B113, C114, D114, E114, F#114, G114, A114, B114, C115, D115, E115, F#115, G115, A115, B115, C116, D116, E116, F#116, G116, A116, B116, C117, D117, E117, F#117, G117, A117, B117, C118, D118, E118, F#118, G118, A118, B118, C119, D119, E119, F#119, G119, A119, B119, C120, D120, E120, F#120, G120, A120, B120, C121, D121, E121, F#121, G121, A121, B121, C122, D122, E122, F#122, G122, A122, B122, C123, D123, E123, F#123, G123, A123, B123, C124, D124, E124, F#124, G124, A124, B124, C125, D125, E125, F#125, G125, A125, B125, C126, D126, E126, F#126, G126, A126, B126, C127, D127, E127, F#127, G127, A127, B127, C128, D128, E128, F#128, G128, A128, B128, C129, D129, E129, F#129, G129, A129, B129, C130, D130, E130, F#130, G130, A130, B130, C131, D131, E131, F#131, G131, A131, B131, C132, D132, E132, F#132, G132, A132, B132, C133, D133, E133, F#133, G133, A133, B133, C134, D134, E134, F#134, G134, A134, B134, C135, D135, E135, F#135, G135, A135, B135, C136, D136, E136, F#136, G136, A136, B136, C137, D137, E137, F#137, G137, A137, B137, C138, D138, E138, F#138, G138, A138, B138, C139, D139, E139, F#139, G139, A139, B139, C140, D140, E140, F#140, G140, A140, B140, C141, D141, E141, F#141, G141, A141, B141, C142, D142, E142, F#142, G142, A142, B142, C143, D143, E143, F#143, G143, A143, B143, C144, D144, E144, F#144, G144, A144, B144, C145, D145, E145, F#145, G145, A145, B145, C146, D146, E146, F#146, G146, A146, B146, C147, D147, E147, F#147, G147, A147, B147, C148, D148, E148, F#148, G148, A148, B148, C149, D149, E149, F#149, G149, A149, B149, C150, D150, E150, F#150, G150, A150, B150, C151, D151, E151, F#151, G151, A151, B151, C152, D152, E152, F#152, G152, A152, B152, C153, D153, E153, F#153, G153, A153, B153, C154, D154, E154, F#154, G154, A154, B154, C155, D155, E155, F#155, G155, A155, B155, C156, D156, E156, F#156, G156, A156, B156, C157, D157, E157, F#157, G157, A157, B157, C158, D158, E158, F#158, G158, A158, B158, C159, D159, E159, F#159, G159, A159, B159, C160, D160, E160, F#160, G160, A160, B160, C161, D161, E161, F#161, G161, A161, B161, C162, D162, E162, F#162, G162, A162, B162, C163, D163, E163, F#163, G163, A163, B163, C164, D164, E164, F#164, G164, A164, B164, C165, D165, E165, F#165, G165, A165, B165, C166, D166, E166, F#166, G166, A166, B166, C167, D167, E167, F#167, G167, A167, B167, C168, D168, E168, F#168, G168, A168, B168, C169, D169, E169, F#169, G169, A169, B169, C170, D170, E170, F#170, G170, A170, B170, C171, D171, E171, F#171, G171, A171, B171, C172, D172, E172, F#172, G172, A172, B172, C173, D173, E173, F#173, G173, A173, B173, C174, D174, E174, F#174, G174, A174, B174, C175, D175, E175, F#175, G175, A175, B175, C176, D176, E176, F#176, G176, A176, B176, C177, D177, E177, F#177, G177, A177, B177, C178, D178, E178, F#178, G178, A178, B178, C179, D179, E179, F#179, G179, A179, B179, C180, D180, E180, F#180, G180, A180, B180, C181, D181, E181, F#181, G181, A181, B181, C182, D182, E182, F#182, G182, A182, B182, C183, D183, E183, F#183, G183, A183, B183, C184, D184, E184, F#184, G184, A184, B184, C185, D185, E185, F#185, G185, A185, B185, C186, D186, E186, F#186, G186, A186, B186, C187, D187, E187, F#187, G187, A187, B187, C188, D188, E188, F#188, G188, A188, B188, C189, D189, E189, F#189, G189, A189, B189, C190, D190, E190, F#190, G190, A190, B190, C191, D191, E191, F#191, G191, A191, B191, C192, D192, E192, F#192, G192, A192, B192, C193, D193, E193, F#193, G193, A193, B193, C194, D194, E194, F#194, G194, A194, B194, C195, D195, E195, F#195, G195, A195, B195, C196, D196, E196, F#196, G196, A196, B196, C197, D197, E197, F#197, G197, A197, B197, C198, D198, E198, F#198, G198, A198, B198, C199, D199, E199, F#199, G199, A199, B199, C200, D200, E200, F#200, G200, A200, B200, C201, D201, E201, F#201, G201, A201, B201, C202, D202, E202, F#202, G202, A202, B202, C203, D203, E203, F#203, G203, A203, B203, C204, D204, E204, F#204, G204, A204, B204, C205, D205, E205, F#205, G205, A205, B205, C206, D206, E206, F#206, G206, A206, B206, C207, D207, E207, F#207, G207, A207, B207, C208, D208, E208, F#208, G208, A208, B208, C209, D209, E209, F#209, G209, A209, B209, C210, D210, E210, F#210, G210, A210, B210, C211, D211, E211, F#211, G211, A211, B211, C212, D212, E212, F#212, G212, A212, B212, C213, D213, E213, F#213, G213, A213, B213, C214, D214, E214, F#214, G214, A214, B214, C215, D215, E215, F#215, G215, A215, B215, C216, D216, E216, F#216, G216, A216, B216, C217, D217, E217, F#217, G217, A217, B217, C218, D218, E218, F#218, G218, A218, B218, C219, D219, E219, F#219, G219, A219, B219, C220, D220, E220, F#220, G220, A220, B220, C221, D221, E221, F#221, G221, A221, B221, C222, D222, E222, F#222, G222, A222, B222, C223, D223, E223, F#223, G223, A223, B223, C224, D224, E224, F#224, G224, A224, B224, C225, D225, E225, F#225, G225, A225, B225, C226, D226, E226, F#226, G226, A226, B226, C227, D227, E227, F#227, G227, A227, B227, C228, D228, E228, F#228, G228, A228, B228, C229, D229, E229, F#229, G229, A229, B229, C230, D230, E230, F#230, G230, A230, B230, C231, D231, E231, F#231, G231, A231, B231, C232, D232, E232, F#232, G232, A232, B232, C233, D233, E233, F#233, G233, A233, B233, C234, D234, E234, F#234, G234, A234, B234, C235, D235, E235, F#235, G235, A235, B235, C236, D236, E236, F#236, G236, A236, B236, C237, D237, E237, F#237, G237, A237, B237, C238, D238, E238, F#238, G238, A238, B238, C239, D239, E239, F#239, G239, A239, B239, C240, D240, E240, F#240, G240, A240, B240, C241, D241, E241, F#241, G241, A241, B241, C242, D242, E242, F#242, G242, A242, B242, C243, D243, E243, F#243, G243, A243, B243, C244, D244, E244, F#244, G244, A244, B244, C245, D245, E245, F#245, G245, A245, B245, C246, D246, E246, F#246, G246, A246, B246, C247, D247, E247, F#247, G247, A247, B247, C248, D248, E248, F#248, G248, A248, B248, C249, D249, E249, F#249, G249, A249, B249, C250, D250, E250, F#250, G250, A250, B250, C251, D251, E251, F#251, G251, A251, B251, C252, D252, E252, F#252, G252, A252, B252, C253, D253, E253, F#253, G253, A253, B253, C254, D254, E254, F#254, G254, A254, B254, C255, D255, E255, F#255, G255, A255, B255, C256, D256, E256, F#256, G256, A256, B256, C257, D257, E257, F#257, G257, A257, B257, C258, D258, E258, F#258, G258, A258, B258, C259, D259, E259, F#259, G259, A259, B259, C260, D260, E260, F#260, G260, A260, B260, C261, D261, E261, F#261, G261, A261, B261, C262, D262, E262, F#262, G262, A262, B262, C263, D263, E263, F#263, G263, A263, B263, C264, D264, E264, F#264, G264, A264, B264, C265, D265, E265, F#265, G265, A265, B265, C266, D266, E266, F#266, G266, A266, B266, C267, D267, E267, F#267, G267, A267, B267, C268, D268, E268, F#268, G268, A268, B268, C269, D269, E269, F#269, G269, A269, B269, C270, D270, E270, F#270, G270, A270, B270, C271, D271, E271, F#271, G271, A271, B271, C272, D272, E272, F#272, G272, A272, B272, C273, D273, E273, F#273, G273, A273, B273, C274, D274, E274, F#274, G274, A274, B274, C275, D275, E275, F#275, G275, A275, B275, C276, D276, E276, F#276, G276, A276, B276, C277, D277, E277, F#277, G277, A277, B277, C278, D278, E278, F#278, G278, A278, B278, C279, D279, E279, F#279, G279, A279, B279, C280, D280, E280, F#280, G280, A280, B280, C281, D281, E281, F#281, G281, A281, B281, C282, D282, E282, F#282, G282, A282, B282, C283, D283, E283, F#283, G283, A283, B283, C284, D284, E284, F#284, G284, A284, B284, C285, D285, E285, F#285, G285, A285, B285, C286, D286, E286, F#286, G286, A286, B286, C287, D287, E287, F#287, G287, A287, B287, C288, D288, E288, F#288, G288, A288, B288, C289, D289, E289, F#289, G289, A289, B289, C290, D290, E290, F#290, G290, A290, B290, C291, D291, E291, F#291, G291, A291, B291, C292, D292, E292, F#292, G292, A292, B292, C293, D293, E293, F#293, G293, A293, B293, C294, D294, E294, F#294, G294, A294, B294, C295, D295, E295, F#295, G295, A295, B295, C296, D296, E296, F#296, G296, A296, B296, C297, D297, E297, F#297, G297, A297, B297, C298, D298, E298, F#298, G298, A298, B298, C299, D299, E299, F#299, G299, A299, B299, C300, D300, E300, F#300, G300, A300, B300, C301, D301, E301, F#301, G301, A301, B301, C302, D302, E302, F#302, G302, A302, B302, C303, D303, E303, F#303, G303, A303, B303, C304, D304, E304, F#304, G304, A304, B304, C305, D305, E305, F#305, G305, A305, B305, C306, D306, E306, F#306, G306, A306, B306, C307, D307, E307, F#307, G307, A307, B307, C308, D308, E308, F#308, G308, A308, B308, C309, D309, E309, F#309, G309, A309, B309, C310, D310, E310, F#310, G310, A310, B310, C311, D311, E311, F#311, G311, A311, B311, C312, D312, E312, F#312, G312, A312, B312, C313, D313, E313, F#313, G313, A313, B313, C314, D314, E314, F#314, G314, A314, B314, C315, D315, E315, F#315, G315, A315, B315, C316, D316, E316, F#316, G316, A316, B316, C317, D317, E317, F#317, G317, A317, B317, C318, D318, E318, F#318, G318, A318, B318, C319, D319, E319, F#319, G319, A319, B319, C320, D320, E320, F#320, G320, A320, B320, C321, D321, E321, F#321, G321, A321, B321, C322, D322, E322, F#322, G322, A322, B322, C323, D323, E323, F#323, G323, A323, B323, C324, D324, E324, F#324, G324, A324, B324, C325, D325, E325, F#325, G325, A325, B325, C326, D326, E326, F#326, G326, A326, B326, C327, D327, E327, F#327, G327, A327, B327, C328, D328, E328, F#328, G328, A328, B328, C329, D329, E329, F#329, G329, A329, B329, C330, D330, E330, F#330, G330, A330, B330, C331, D331, E331, F#331, G331, A331, B331, C332, D332, E332, F#332, G332, A332, B332, C333, D333, E333, F#333, G333, A333, B333, C334, D334, E334, F#334, G334, A334, B334, C335, D335, E335, F#335, G335, A335, B335, C336, D336, E336, F#336, G336, A336, B336, C337, D337, E337, F#337, G337, A337, B337, C338, D338, E338, F#338, G338, A338, B338, C339, D339, E339, F#339, G339, A339, B339, C340, D340, E340, F#340, G340, A340, B340, C341, D341, E341, F#341, G341, A341, B341, C342, D342, E342, F#342, G342, A342, B342, C343, D343, E343, F#343, G343, A343, B343, C344, D344, E344, F#344, G344, A344, B344, C345, D345, E345, F#345, G345, A345, B345, C346, D346, E346, F#346, G346, A346, B346, C347, D347, E347, F#347, G347, A347, B347, C348, D348, E348, F#348, G348, A348, B348, C349, D349, E349, F#349, G349, A349, B349, C350, D350, E350, F#350, G350, A350, B350, C351, D351, E351, F#351, G351, A351, B351, C352, D352, E352, F#352, G352, A352, B352, C353, D353, E353, F#353, G353, A353, B353, C354, D354, E354, F#354, G354, A354, B354, C355, D355, E355, F#355, G355, A355, B355, C356, D356, E356, F#356, G356, A356, B356, C357, D357, E357, F#357, G357, A357, B357, C358, D358, E358, F#358, G358, A358, B358, C359, D359, E359, F#359, G359, A359, B359, C360, D360, E360, F#360, G360, A360, B360, C361, D361, E361, F#361, G361, A361, B361, C362, D362, E362, F#362, G36



Bass Clarinet

Band Basics in Bb

Developing Ensemble Sound and Technique

John McAllister

Bb Scale

Musical staff for the Bb Scale, measures 1 through 8. The scale is written in treble clef with a key signature of two flats (Bb and Eb) and a 4/4 time signature. The notes are: 1. Bb, 2. C, 3. D, 4. Eb, 5. F, 6. G, 7. Ab, 8. Bb.

Listen to the Sections

Musical staff for Listen to the Sections, measures 9 through 17. The staff is divided into four sections: 9-10 (Woodwind Choir), 11-12 (Brass Choir), 13-14 (Percussion Section), and 15-17 (Full Band). Measures 11 and 13 contain rests for the Percussion Section.

Solidify the Key

Musical staff for Solidify the Key, measures 18 through 25. The staff contains a sequence of notes in Bb major. Measure 21 includes a fermata. Measure 22 is marked *opt. 8va*.

Technique #1

Musical staff for Technique #1, measures 26 through 29. This section features a continuous eighth-note pattern.

Musical staff for Technique #1, measures 30 through 33. This section continues the eighth-note pattern from the previous staff.

Technique #2

Musical staff for Technique #2, measures 34 through 38. This section features a continuous sixteenth-note pattern.

Chorale

Musical staff for Chorale, measures 39 through 42. This section features a slower, more melodic line.

Musical staff for Chorale, measures 43 through 47. This section continues the melodic line from the previous staff.

Bass Clarinet

Band Basics in Eb

Developing Ensemble Sound and Technique

John McAllister

Eb Scale

Musical notation for the Eb scale, measures 1-8. The scale is written in bass clef with a key signature of two flats (Bb and Eb) and a 4/4 time signature. The notes are: 1. Eb, 2. F, 3. G, 4. Ab, 5. Bb, 6. C, 7. D, 8. Eb.

Listen to the Sections

Musical notation for 'Listen to the Sections', measures 9-17. The notation is split into four sections: 9-10: *Woodwind Choir*; 11-13: *Brass Choir* (with a '2' above the staff); 14-15: *Percussion Section* (with a '2' above the staff); 16-17: *Full Band*.

Solidify the Key

Musical notation for 'Solidify the Key', measures 18-25. The notation is in bass clef with a key signature of two flats and a 4/4 time signature, showing a sequence of notes that reinforce the Eb key signature.

Technique #1

Musical notation for 'Technique #1', measures 26-29. The notation is in bass clef with a key signature of two flats and a 4/4 time signature, featuring a continuous eighth-note pattern.

Musical notation for 'Technique #1', measures 30-33. The notation is in bass clef with a key signature of two flats and a 4/4 time signature, continuing the eighth-note pattern from the previous section.

Technique #2

Musical notation for 'Technique #2', measures 34-37. The notation is in bass clef with a key signature of two flats and a 4/4 time signature, featuring a continuous eighth-note pattern.

Chorale

Musical notation for 'Chorale', measures 38-41. The notation is in bass clef with a key signature of two flats and a 4/4 time signature, featuring a melodic line with some rests.

Musical notation for 'Chorale', measures 42-47. The notation is in bass clef with a key signature of two flats and a 4/4 time signature, continuing the melodic line from the previous section.

Bass Clarinet

Band Basics in Ab
Developing Ensemble Sound and Technique

John McAllister

Bb Scale

Musical notation for the Bb Scale, measures 1 through 8. The scale is written in a single line of music, starting on Bb and ascending to G. Fingerings are indicated by numbers 1-5 above the notes.

Listen to the Sections

Musical notation for 'Listen to the Sections', measures 9 through 17. The notation is divided into four sections: measures 9-11 for 'Woodwind Choir', measures 12-14 for 'Brass Choir', measures 15-16 for 'Percussion Section', and measure 17 for 'Full Band'. Each section contains a single note.

Solidify the Key

Musical notation for 'Solidify the Key', measures 18 through 25. Measures 18-21 feature a half note on Bb. Measures 22-25 feature a quarter note on Bb. An 'opt. 8va' instruction is placed below measures 22-25.

Technique #1

Musical notation for 'Technique #1', measures 26 through 29. The notation consists of eighth notes ascending from Bb to G.

Musical notation for 'Technique #1', measures 30 through 33. The notation consists of eighth notes descending from G to Bb.

Technique #2

Musical notation for 'Technique #2', measures 34 through 37. The notation consists of eighth notes ascending from Bb to G. An 'opt. 8va' instruction is placed below measure 34.

Chorale

Musical notation for 'Chorale', measures 38 through 41. The notation consists of eighth notes ascending from Bb to G.

Musical notation for 'Chorale', measures 42 through 47. The notation consists of eighth notes descending from G to Bb.

Bass Clarinet

Band Basics in F

Developing Ensemble Sound and Technique

John McAllister

E♭ Scale

Musical notation for the E♭ scale, measures 2 through 8. The scale is written in treble clef with a key signature of one sharp (F#) and a 2/4 time signature. The notes are: 2 (F#), 3 (G), 4 (A), 5 (B), 6 (C), 7 (D), 8 (E).

Listen to the Sections

Musical notation for 'Listen to the Sections', measures 9 through 17. The notation is in treble clef with a key signature of one sharp (F#) and a 2/4 time signature. Measures 11 and 13 contain rests for the Brass Choir and Percussion Section respectively. Labels below the staff indicate: *Woodwind Choir* (measures 9-10), *Brass Choir* (measure 11), *Percussion Section* (measure 13), and *Full Band* (measures 15-17).

Solidify the Key

Musical notation for 'Solidify the Key', measures 18 through 25. The notation is in treble clef with a key signature of one sharp (F#) and a 2/4 time signature. It features a sequence of eighth notes and quarter notes across the staff.

Technique #1

Musical notation for 'Technique #1', measures 26 through 29. The notation is in treble clef with a key signature of one sharp (F#) and a 2/4 time signature. It consists of eighth-note patterns.

Musical notation for 'Technique #1', measures 30 through 33. The notation is in treble clef with a key signature of one sharp (F#) and a 2/4 time signature. It continues the eighth-note patterns from the previous section.

Technique #2

Musical notation for 'Technique #2', measures 34 through 37. The notation is in treble clef with a key signature of one sharp (F#) and a 2/4 time signature. It features sixteenth-note patterns.

Chorale

Musical notation for 'Chorale', measures 38 through 41. The notation is in treble clef with a key signature of one sharp (F#) and a 2/4 time signature. It features a melodic line with some rests.

Musical notation for 'Chorale', measures 42 through 47. The notation is in treble clef with a key signature of one sharp (F#) and a 2/4 time signature. It continues the melodic line from the previous section.

♭

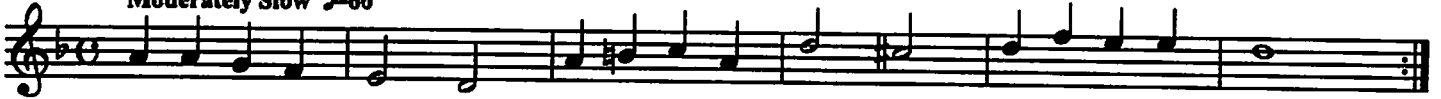
CL/BCL/TPT/TSK
Bx.T.C

Chorale No. 1

Johann Crüger (1598-1663)

Soprano

Moderately Slow ♩=60



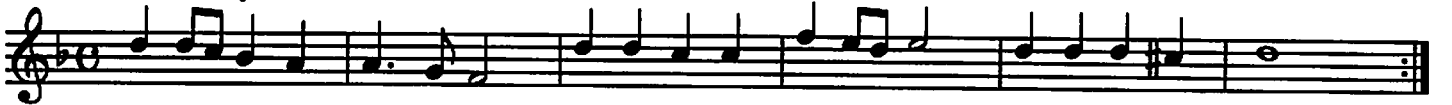
Alto

Moderately Slow ♩=60



Tenor

Moderately Slow ♩=60



Bass

Moderately Slow ♩=60



B♭ U/BCL
TR/TRK/BA.T.C.

Exordium 2

Soprano

Moderately Slow ♩=70

Musical staff for Soprano part, measures 1-6. The staff is in treble clef with a key signature of one flat (B♭). The tempo is 'Moderately Slow' with a metronome marking of ♩=70. The music consists of a sequence of eighth and quarter notes.

Musical staff for Soprano part, measures 7-12. The staff is in treble clef with a key signature of one flat (B♭). The tempo is 'Moderately Slow' with a metronome marking of ♩=70. The music continues with eighth and quarter notes.

Alto

Moderately Slow ♩=70

Musical staff for Alto part, measures 1-6. The staff is in treble clef with a key signature of one flat (B♭). The tempo is 'Moderately Slow' with a metronome marking of ♩=70. The music consists of a sequence of eighth and quarter notes.

Musical staff for Alto part, measures 7-12. The staff is in treble clef with a key signature of one flat (B♭). The tempo is 'Moderately Slow' with a metronome marking of ♩=70. The music continues with eighth and quarter notes.

Tenor

Moderately Slow ♩=70

Musical staff for Tenor part, measures 1-6. The staff is in treble clef with a key signature of one flat (B♭). The tempo is 'Moderately Slow' with a metronome marking of ♩=70. The music consists of a sequence of eighth and quarter notes.

Musical staff for Tenor part, measures 7-12. The staff is in treble clef with a key signature of one flat (B♭). The tempo is 'Moderately Slow' with a metronome marking of ♩=70. The music continues with eighth and quarter notes.

Bass

Moderately Slow ♩=70

Musical staff for Bass part, measures 1-6. The staff is in treble clef with a key signature of one flat (B♭). The tempo is 'Moderately Slow' with a metronome marking of ♩=70. The music consists of a sequence of eighth and quarter notes.

Musical staff for Bass part, measures 7-12. The staff is in treble clef with a key signature of one flat (B♭). The tempo is 'Moderately Slow' with a metronome marking of ♩=70. The music continues with eighth and quarter notes.

B♭

CL/BCL
TPT/TSX
Bar. T. C.

Chorale No. 4

J.S. Bach (1685-1750)

Soprano

Moderately ♩=80



8



Alto

Moderately ♩=80



8



Tenor

Moderately ♩=80



8



Bass

Moderately ♩=80



8

